

6. CCC Approved Equipment

6.1. What is CCC?

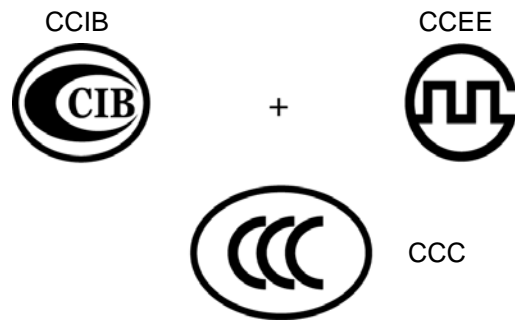
In 1993, CCIB (China Commodity Inspection Bureau) has introduced Safety Certification (CCIB Certification) for imported electric and electronic products under the control of SAIQ (The State Administration for Entry-Exit Inspection and Quarantine of P.R. of China).

In 1994, CCEE (China Commission for Conformity Certification of Electrical Equipment) has introduced Safety Certification (CCEE Certification) for electric and electronic products sold in China, under the control of CSBTS (China State Bureau of Quality and Technical Supervision).

In such situation, the government of China took the opportunity of joining in WTO (World Trade Organization) in November 2001, and two certification (CCEE and CCIB) merged into a single certification.

CCC (China Compulsory Certification) was announced as a new compulsory product safety certification.

CCC has enforced on May 1, 2002 and effective on August 1, 2003.



6.2. Certification Mark

One of the following 4 marks shall be displayed on products or packages and instruction manuals.



S: Safety



EMC: EMC



S&E: Safety and EMC



F: Fire-fighting Products

6.3. Products Requiring CCC

Products requiring Certification should be the following 19 items, 132 categories listed in the "First Catalogue of Products Subjects to Compulsory Certification" published as "Joint Announcement No. 2001-33 by AQSIQ*1 and CNCA*2".

*1: State General Administration of the People's Republic of China for Quality Supervision and Inspection and Quarantine

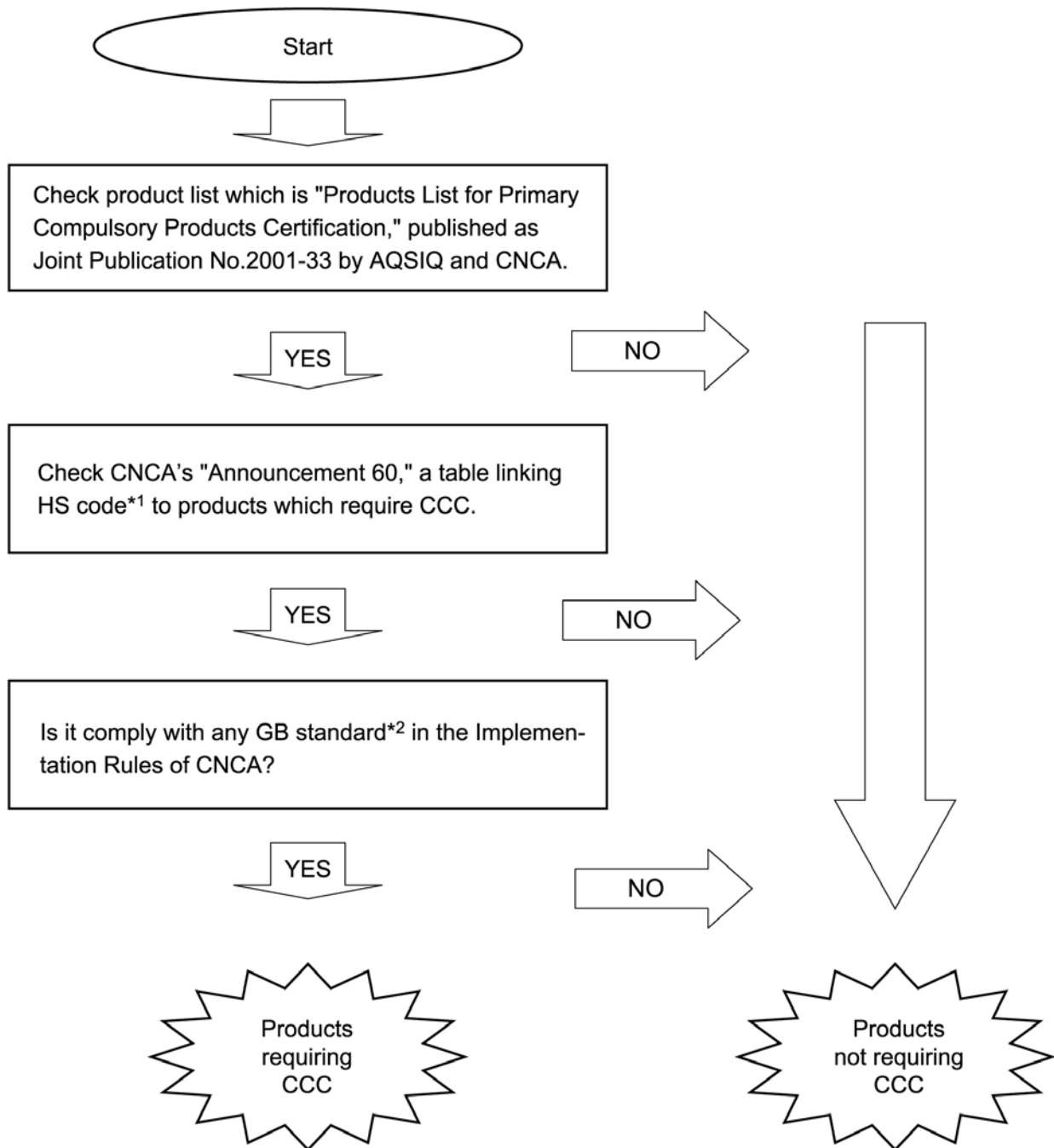
*2: Certification and Accreditation Administration of the People's Republic of China

1	Electrical wires and cables (5 categories)	2	Switches for circuits, installation protective and connection devices (6 categories)
3	Low-voltage Electrical Apparatus (9 categories) (1) Residual current protective devices (2) Circuit-breakers (RCCB, RCBO, MCB) (3) Fuses (4) Low-voltage switches (disconnectors, switch-disconnectors, and fuse-combination units) (5) Other protective equipment for circuits (current limiting devices, circuits protective devices, over current protective devices, thermal protectors, over load relays, low-voltage electromechanical contactors and motor starters) (6) Relays (36V < voltage ≤ 1000V) (7) Other switches (switches for appliances, vacuum switches, pressure switches, proximity switches, foot switches, thermal sensitive switches, hydraulic switches, push-button switches, Position limit switches, Micro-gap switches, two direction switches, temperature sensitive switches, travel switches, change-over switches, auto-change-over switches, knife switches) (8) Other devices (contactors, motor starters, indicator lights, auxiliary contact assemblies, master controllers, A.C. Semiconductor motor controllers and starters) (9) Low-voltage switchgear and control gear assemblies		
4	Small power motors (1 category) (1) Small power motors		
5	Electric tools (16 categories)	6	Welding machines (15 categories)
7	Household and similar electrical appliances (18 categories)	8	Audio and video apparatus (not including the acoustics apparatus for broadcasting service and automobiles) (16 categories)
9	Information technology equipment (IT) (12 categories)	10	Lighting apparatus (2 categories) (not including the lighting apparatus with the voltage lower than 36V)
11	Telecommunication Terminal equipment (9 categories)	12	Motor vehicles and Safety Parts (4 categories)
13	Motor vehicle Tyres (3 categories)	14	Safety Glasses (3 categories)
15	Agricultural Machinery (1 category)	16	Latex Products (1 category)
17	Medical Devices (7 categories)	18	Fire Fighting Equipment (3 categories)
19	Detectors for Intruder Alarm Systems (1 category)		

Note: Our products belong to the above item 3 and 4.

6.4. The Application Process of FUJI's Products Requiring CCC

(1) Determine whether your products require CCC



Note 1) CNCA finally judges whether or not the product requires CCC. For products other than FUJI's products, if judgment as to whether or not they are subject to the categories cannot be clearly determined, contact CNCA.

*1: Product classification codes internationally unified (customs clearance for export and import)

*2: Chinese national standard

(2) List of FUJI's products for CCC

Model	GB Standard	IEC Standard for reference ^{*2}	CCC required?	What is being done?	
Power distribution & control equipments	Magnetic contactor, magnetic motor starter	GB14048.4-2003	IEC60947-4-1-2000	Yes	Certification acquired
	Industrial relay	GB14048.5-2001	IEC60947-5-1-1997	Yes	Certification acquired
	Thermal overload relays	GB14048.4-2003	IEC60947-4-1-2000	Yes	Certification acquired
	Manual motor starter	GB14048.2-2001	IEC60947-2-1997	Yes	Certification acquired
	Molded case circuit breaker	GB14048.2-2001	IEC60947-2-1997	Yes	Certification acquired
	Earth leakage circuit breaker	GB14048.2-2001	IEC60947-2-1997	Yes	Certification acquired
	Semiconductor protection fuse (CR series)	GB13539.1-2002 GB13539.4-1992	IEC60269-1-1998 IEC60269-4-4-1986	Yes	Certification acquired
	Pushbutton, selector switch, pilot lights	GB14048.5-2001	IEC60947-5-1-1997	Yes	Certification acquired
	Circuit protector	GB17701-1999	IEC60934-1993	Yes	Certification acquired(CP-F,CP-T series)
	Cam switch	GB14048.5-2001	IEC60947-5-1-1997	Yes	Certification acquired(only AK series)
	Solid-state contactor (motor load use)	GB14048.6-1998	IEC60947-4-2-1995	Yes	-
	D-type fuse	-	-	Yes	-
	Pilot lights(DP series)	GB14048.5-2001	IEC60947-5-1-1997	Yes	-
	Limit switch	GB14048.5-2001	IEC60947-5-1-1997	Yes	-
	Proximity limit switch	GB14048.10-1999	IEC60947-5-2-1992	Yes	-
	Buzzer	-	-	No	*1
	Solid-state contactor (Heater load use)	-	-	No	*1
	Rotary switch	-	-	No	*1
	Control relay (HH relay/Card relay)	GB14598.2-1993	IEC60255-1-00-1975	No	*1
	Timer	-	-	No	*1
	Terminal block	-	-	No	
	Power monitoring equipment (F-MPC)	-	-	No	
	Automatic power factor regulator	-	-	No	
UPS	-	-	No		
Transducer	-	-	No		
Instrument transformer	-	-	No		
Measuring instrument	-	-	No		
Panel meter	-	-	No		
Rotating machines	Induction motor (under 1.1 kW)	GB12350-2000	-	Yes	Certification acquired
	VG, high-speed motor (induction motor under 1.1kW)	GB12350-2000	-	Yes	-
	Brake motor (under 750W)	GB12350-2000	-	Yes	-
	Geared motor	GB12350-2000	-	Yes	-
	Single-phase motor	GB12350-2000	-	Yes	-
	Ring blow, turbo blow fan	-	-	No	
FA equipments	Coolant pump	-	-	No	
	Inverter	-	-	No	
	AC servo amplifier	-	-	No	
	AC servomotor	-	-	No	*1
	PLC (Programmable logic controller)	-	IEC61131-1,2,3	No	
POD (Programmable operational display)	-	-	No		

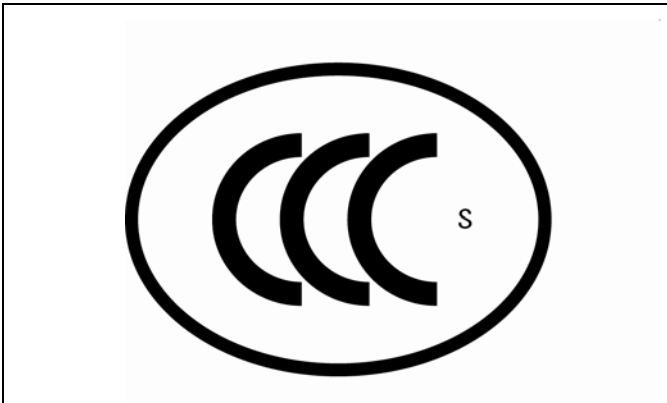
Note: Conformity standards required by CCC are GB Standards. IEC Standards are shown for reference, as they are partly inconsistent with GB Standards

*1 CNCA-published certificate for inapplicable categories obtained. The CCC certificate of the issue of production's certification has been stopped by the CNCA in Beijing and lots of local customs, the production is out of range. When apply for the license, the improper certification which is issued by China earlier can be seemed as the reference. When export to China, you should consult local custom of China, different local customs have its own disposing way.

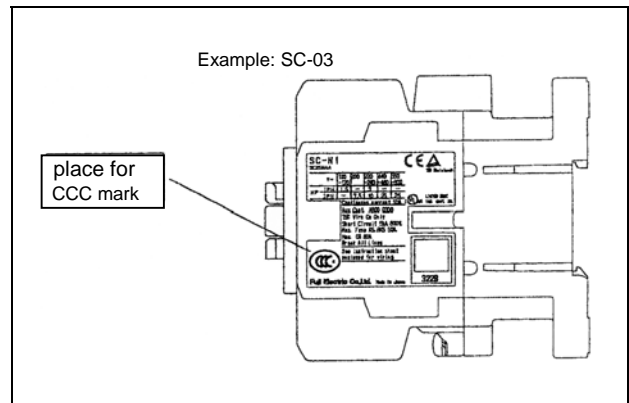
6.5. Example of Displaying Certification Marks

All our products have obtained certification for S (Safety) and the following mark is displayed on products or on packages and instruction manual.

Certification mark



Example of name plate: Magnetic contactor



6.6. Ordering Type Number for CCC

Example for a magnetic contactor

SC-5-1 AC220 50HZ 1 a 1 b (CCC)

Add after Type/Specification

Example for an molded case circuit breaker

EA 103C/100WK (CCC)

Add after Type/Specification

Example for a pushbutton switch

AR 22 FOR-11B (CCC)

Add after Type

Example for a circuit protector

CP 33 FM/30 (CCC)

Add after Type

6.7. List of Certified Products

(1) Contactors

● Standard magnetic contactors

Frame	Type	Certificate No.
03 0 05	SC-03 SC-0 SC-05	2003010304063432
4-0 4-1 5-1	SC-4-0 SC-4-1 SC-5-1	2003010304063438
N1 N2	SC-N1 SC-N2	2003010304063394
N2S N3	SC-N2S SC-N3	2003010304067046
N4 N5	SC-N4 SC-N5	2003010304063396
N6	SC-N6	2003010304063437
N7	SC-N7	2003010304063436
N8 N10	SC-N8 SC-N10	2003010304063435
N11 N12	SC-N11 SC-N12	2003010304063393
N14 N16	SC-N14 SC-N16	2003010304067052

● Reversing magnetic contactors

Frame	Type	Certificate No.
03 05 4-0	SC-03RM SC-0RM SC-05RM	2003010304063432
4-0 4-1 5-1	SC-4-0RM SC-4-1RM SC-5-1RM	2003010304063438
N1 N2	SC-N1RM SC-N2RM	2003010304063394
N2S N3	SC-N2SRM SC-N3RM	2003010304067046
N4 N5	SC-N4RM SC-N5RM	2003010304063396
N6	SC-N6RM	2003010304063437
N7	SC-N7RM	2003010304063436
N8 N10	SC-N8RM SC-N10RM	2003010304063435
N11 N12	SC-N11RM SC-N12RM	2003010304063393
N14	SC-N14RM	2003010304067052

● DC operated magnetic contactors

Frame	Type	Certificate No.
03 0 05	SC-03/G SC-0/G SC-05/G	2003010304063432
4-0 4-1 5-1	SC-4-0/G SC-4-1/G SC-5-1/G	2003010304063438
N1 N2	SC-N1/G SC-N2/G	2003010304063394
N2S N3	SC-N2S/G SC-N3/G	2003010304067046

● Reversing DC operated magnetic contactors

Frame	Type	Certificate No.
03 0 05	SC-03RM/G SC-0RM/G SC-05RM/G	2003010304063432
4-0 4-1 5-1	SC-4-0RM/G SC-4-1RM/G SC-5-1RM/G	2003010304063438
N1 N2	SC-N1RM/G SC-N2RM/G	2003010304063394
N2S N3	SC-N2SRM/G SC-N3RM/G	2003010304067046

● Magnetic contactors with super magnet

Frame	Type	Certificate No.
N1 N2	SC-N1/SE SC-N2/SE	2003010304063394
N2S N3	SC-N2S/SE SC-N3/SE	2003010304067046
N4	SC-N4/SE	2003010304063396

● Reversing magnetic contactors with super magnet

Frame	Type	Certificate No.
N1 N2	SC-N1RM/SE SC-N2RM//SE	2003010304063394
N2S N3	SC-N2SRM//SE SC-N3RM//SE	2003010304067046
N4	SC-N4RM//SE	2003010304063396

● Low-voltage compensation type magnetic contactors

Frame	Type	Certificate No.
03 0 05	SC-03/U SC-0/U SC-05/U	2003010304063432
4-0 4-1 5-1	SC-4-0/U SC-4-1/U SC-5-1/U	2003010304063438
N1 N2	SC-N1/U SC-N2/U	2003010304063394
N2S N3	SC-N2S/U SC-N3/U	2003010304067046
N4	SC-N4/U	2003010304063396

● Reversing low-voltage compensation type magnetic contactors

Frame	Type	Certificate No.
03 0 05	SC-03RM/U SC-0RM/U SC-05RM/U	2003010304063432
4-0 4-1 5-1	SC-4-0RM/U SC-4-1RM/U SC-5-1RM/U	2003010304063438
N1 N2	SC-N1RM/U SC-N2RM/U	2003010304063394
N2S N3	SC-N2SRM/U SC-N3RM/U	2003010304067046
N4	SC-N4RM/U	2003010304063396

● **Magnetic contactors with high-capacity contact (single contact)**

Frame	Type	Certificate No.
03 0 05	SC-03H SC-0H SC-05H	2003010304063432
4-0 4-1 5-1	SC-4-0H SC-4-1H SC-5-1H	2003010304063438
N1 N2	SC-N1H SC-N2H	2003010304063394
N2S N3	SC-N2SH SC-N3H	2003010304067046
N4 N5	SC-N4H SC-N5H	2003010304063396
N6 N7	SC-N6H SC-N7H	2003010304063437 2003010304063436
N8 N10	SC-N8H SC-N10H	2003010304063435
N11 N12	SC-N11H SC-N12H	2003010304063393

● **Reversing high-capacity contact (single contact) -incorporated magnetic contactors**

Frame	Type	Certificate No.
03 0 05	SC-03HRM SC-0HRM SC-05HRM	2003010304063432
4-0 4-1 5-1	SC-4-0HRM SC-4-1HRM SC-5-1HRM	2003010304063438
N1 N2	SC-N1HRM SC-N2HRM	2003010304063394
N2S N3	SC-N2SHRM SC-N3HRM	2003010304067046
N4 N5	SC-N4HRM SC-N5HRM	2003010304063396
N6 N7	SC-N6HRM SC-N7HRM	2003010304063437 2003010304063436
N8 N10	SC-N8HRM SC-N10HRM	2003010304063435
N11 N12	SC-N11HRM SC-N12HRM	2003010304063393

● **Other combination magnetic contactors**

Certification is granted to combinations of above-listed certified types.

● **SJ series high-sensitivity contactors**

Frame	Type of magnetic contactors	Type of reversing magnetic contactors	Certificate No.
0	SJ-0G	SJ-0GRM	2003010304067070
06	SJ-06G	SJ-06GRM	2003010304067070
1S	SJ-1SG	SJ-1SGRM	2003010304067065

● **Mini-Contactor**

Frame	Type of magnetic contactors	Certificate No.
01	SC-M01	2004010304113296
	SC-M01G□	
02	SC-M02	
	SC-M02G□	

● **FC series AC operated magnetic contactors**

Frame	Type of standard products	Type of UL/CSA products	Certificate No.
0	FC-0	FC-0UL	2003010304088942
0T	FC-0T	FC-0TUL	
0S	FC-0S	FC-0SUL	
0ST	FC-0ST	FC-0STUL	
1	FC-1	FC-1UL	2003010304088935
1S	FC-1S	FC-1SUL	
2S	FC-2S	FC-2SUL	2003010304088929
3	FC-3	FC-3UL	
4	FC-4	FC-4UL	2003010304088923

● **FC series DC operated magnetic contactors**

Frame	Type of magnetic contactors	Type of UL/CSA products	Certificate No.
0	FC-0/G	FC-0/GUL	2003010304088942
0T	FC-0T/G	FC-0T/GUL	
0S	FC-0S/G	—	—
0ST	FC-0ST/G	—	

(2) **Auxiliary Relays**

● **Standard auxiliary relays**

Type	Certificate No.
SH-4 SH-5	2003010309087168

● **DC operated auxiliary relays**

Type	Certificate No.
SH-4/G SH-5/G	2003010309087168

● **Constant voltage compensation type auxiliary relays**

Type	Certificate No.
SH-4/U SH-5/U	2003010309087168

● **Single contact type auxiliary relays**

Type	Certificate No.
SH-4H SH-5H	2003010309087168

(3) **Optional Equipment and Parts of Magnetic Contactors and Auxiliary Relays**

Part name	Type	Applicable type	Certificate No.
Auxiliary contact block (front mounting, bifurcated)	SZ-A40	SC-03~N3 SH-4, SH-5	Certified according to an applicable type.
	SZ-A31		
	SZ-A22		
	SZ-A20		
	SZ-A11		
Auxiliary contact block (front mounting, single button)	SZ-A02	SC-03~N3 SH-4, SH-5	
	SZ-A40H		
	SZ-A31H		
Auxiliary contact block (side mounting, bifurcated)	SZ-A22H	SC-03~N3 SH-4, SH-5	
	SZ-AS1		
Auxiliary contact block (side mounting, single button)	SZ-AS2	SC-N4~N12	
	SZ-AS1H	SC-03~N3 SH-4, SH-5	
	SZ-AS2H	SC-N4~N12	
	SZ-AS3H	SC-N14, N16	

(4) Thermal Overload Relays

● **Standard thermal overload relays**

Frame	Type of magnetic starters	Separate mounting type	Certificate No.
0N	TR-0N/3	TR-0NH/3	2003010304063397
5-1N	TR-5-1N/3	TR-5-1NH/3	2003010304063400
N2	TR-N2/3	TR-N2H/3	2003010304063425
N3	TR-N3/3	TR-N3H/3	2003010304063404
N5	TR-N5/3		
N6	TR-N6/3	TR-N6H/3	2003010304063447
N7	TR-N7/3		
N8	TR-N8/3		
N10	TR-N10/3	TR-N10H/3	2003010304063429
N12	TR-N12/3	TR-N12H/3	2003010304063434
N14	TR-N14/3	TR-N14H/3	2003010304063406

● **2E thermal overload relays**

Frame	Type of magnetic starters	Separate mounting type	Certificate No.
0N	TK-0N	TK-0NH	2003010304063397
5-1N	TK-5-1N	TK-5-1NH	2003010304063400
N2	TK-N2	TK-N2H	2003010304063425
N3	TK-N3	TK-N3H	2003010304063404
N5			
N6	TK-N6	TK-N6H	2003010304063447
N7	TK-N7		
N8	TK-N8		
N10	TK-N10	TK-N10H	2003010304063429
N12	TK-N12	TK-N12H	2003010304063434
N14	TK-N14	TK-N14H	2003010304063406

● **Quick operating type thermal overload relays**

Frame	Type of magnetic starters	Separate mounting type	Certificate No.
0N	TR-0NQ	TR-0NQH	2003010304063397
5-1N	TR-5-1NQ	TR-5-1NQH	2003010304063400
N2	TR-N2Q	TR-N2QH	2003010304063425
N3	TR-N3Q	TR-N5Q	2003010304063404
N5	TR-N5Q		

● **2E quick operating type thermal overload relays**

Frame	Type of magnetic starters	Separate mounting type	Certificate No.
0N	TK-0NQ	TK-0NQH	2003010304063397
5-1N	TK-5-1NQ	TK-5-1NQH	2003010304063400
N2	TK-N2Q	TK-N2QH	2003010304063425
N3	TK-N3Q	TK-N3QH	2003010304063404
N5	TK-N5Q		

● **Automatically resetting type thermal overload relays**

Frame	Type of magnetic starters	Separate mounting type	Certificate No.
0N	TR-0N/3A	TR-0NH/3A	2003010304063397
5-1N	TR-5-1N/3A	TR-5-1NH/3A	2003010304063400
N2	TR-N2/3A	TR-N2H/3A	2003010304063425
N3	TR-N3/3A	TR-N3H/3A	2003010304063404
N5	TR-N5/3A		
N6	TR-N6/3A	TR-N6H/3A	2003010304063447
N7	TR-N7/3A		
N8	TR-N8/3A		
N10	TR-N10/3A	TR-N10H/3A	2003010304063429
N12	TR-N12/3A	TR-N12H/3A	2003010304063434
N14	TR-N14/3A	TR-N14H/3A	2003010304063406

● **FC series thermal overload relays**

Frame	Type of magnetic starters	Certificate No.
0NF	TR-0NF/3 TK-0NF TR-0NFQ TK-0MFQ	2003010304063397
5-1N	TR-5-1N/3 TK-5-1N TR-5-1NQ TK-5-1NQ	2003010304063400
N2F	TR-N2F/3 TK-N2F TR-N2FQ TK-N2FQ	2003010304063425
N3	TR-N3/3 TK-N3 TR-N3Q TK-N3Q	2003010304063404

● **Thermal overload relays for high-sensitivity contactor**

Frame	Type of magnetic starters	Certificate No.
0N	TR-0NZ716/3 TK-0NZ716	2003010304063397

(5) Manual Motor Starters (MMS)

● **MMS**

Frame	Standard breaking capacity	High breaking capacity		Certificate No.
	Adjustable thermal-magnetic trip type	Adjustable thermal-magnetic trip type	Instantaneous trip type	
32A	BM3RSB			2003010307076338
		BM3RHB	BM3RHBK	2003010307076342
63A	BM3VSB	BM3VHB	BM3VHBK	2003010307076333

(6) Molded Case Circuit Breakers

● Mainframe of MCCBs

Series	AF	pole		Rated breaking current (Icu/Ics) [kA]		Certificate No.
		2-pole	3-pole	Ue:AC230V	Ue:AC400V	
E	30	EA32AC	EA33AC	2.5/2	1.5/1	2003010307063433
		-	EA33ACM	2.5/2	1.5/1	
	50	EA52AC	EA53AC	2.5/2	1.5/1	2003010307063635
		-	EA53CM	5/3	2.5/2	
	60	EA62C	EA63C	5/3	2.5/2	2003010307063385
		-	EA63CM	5/3	2.5/2	
	100	-	EA103AC	5/3	1.5/1	2003010307063440
		EA102C	EA103C	25/13	10/5	2003010307063647
		-	EA103CM	25/13	10/5	
	225	EA202C	EA203C	35/18	15/4	2004010307116273
		-	EA203CM	35/18	15/4	2005010307150666
	400	EA402C	EA403C	35/18	25/13	2003010307063390
		-	-	-	-	2005010307153022
	600	-	EA603C	50/25	35/18	2003010307063391
800	-	EA803C	50/25	35/18		
S	30	SA32C	SA33C	5/3	2.5/2	2003010307063635
		SA32CM	SA33CM	5/3	2.5/2	
	50	SA52C	SA53C	10/5	7.5/4	2003010307063640
		-	SA53CM	10/5	7.5/4	
		SA52RC	SA53RC	25/13	10/5	
	-	SA53RCM	25/13	10/5		
	60	SA62C	SA63C	10/5	7.5/4	2003010307063646
		-	SA63CM	10/5	7.5/4	
		SA62RC	SA63RC	25/13	10/5	
	100	SA102C	SA103C	50/25	25/7	2004010307116286
		-	SA103CM	50/25	25/7	2005010307150667
		SA102RC	SA103RC	100/50	50/13	2004010307116286
		-	SA103RCM	100/50	50/13	
	225	SA202C	SA203C	50/25	25/7	2004010307116273
		-	SA203CM	50/25	25/7	2005010307150666
		SA202RC	SA203RC	100/50	50/13	
		-	SA203RCM	100/50	50/13	
	400	SA402C	SA403C	50/25	35/18	2003010307063390
		SA402RC	SA403RC	85/43	50/25	2005010307153022
	600	-	SA603RC	85/43	50/25	2003010307063391
	800	-	SA803RC	85/43	50/25	

(7) Earth Leakage Circuit Breakers

● Mainframe of ELCBs

Series	AF	pole		Rated breaking current (Icu/Ics) [kA]		Certificate No.	
		2-pole	3-pole	Ue:AC230V	Ue:AC400V		
E	30	EG32AC	EG33AC	2.5/2	-	2004010307138037	
		-	EG33C	2.5/2	1.5/1	2004010307138028	
		-	EG33CM	2.5/2	1.5/1		
	50	EG52AC	EG53AC	2.5/2	-	2004010307138037	
		-	EG53C	5/3	2.5/2	2004010307138024	
		-	EG53CM	5/3	2.5/2		
	60	-	EG63C	5/3	2.5/2	2004010307138036	
		-	EG63CM	5/3	2.5/2		
	100	-	EG103AC	5/3	2.5/2	2004010307138038	
		EG102C	-	10/5	-	2004010307138025	
		-	EG103C	25/13	10/5	2004010307138027	
		-	EG103CM	25/13	10/5		
	225	-	EG203C	35/18	15/4	2005010307140482	
		-	EG203CM	35/18	15/4		
	400	-	EG403C	35/18	25/13	2004010307138029	
	600	-	SG603RC	85/43	25/13	2006010307191225	
	800	-	SG803RC	85/43	25/13		
	S	30	-	SG33C	5/3	2.5/2	2004010307138024
			-	SG33CM	5/3	2.5/2	
		50	-	SG53C	10/5	7.5/4	2004010307138031
			-	SG53CM	10/5	7.5/4	
			-	SG53RC	25/13	10/5	2004010307138026
		60	-	SG63C	10/5	7.5/4	2004010307138033
			-	SG63CM	10/5	7.5/4	
-			SG63RC	25/13	10/5	2004010307138027	
100		-	SG103C	50/25	25/7	2005010307140481	
		-	SG103CM	50/25	25/7		
		-	SG103RC	100/50	50/13	2004010307138030	
		-	SG103RCM	100/50	50/13		
225		-	SG203C	50/25	25/7	2004010307138035	
		-	SG203CM	50/25	25/7		
		-	SG203RC	100/50	50/13		
		-	SG203RCM	100/50	50/13		
400		-	SG403C	50/25	35/18	2004010307138029	
		-	SG403RC	85/43	50/25		
600		-	EG603RC	85/43	50/25	2006010307191225	
800		-	EG803RC	85/43	50/25		

(8) Optional equipment and parts of MCCBs and ELCBs

● Internal accessories of MCCBs and ELCBs

• 30, 50, 60, 100AF 2-pole

Internal accessories	Type	Type of breaker with accessory	Certificate No.
W (Auxiliary)	EA32AC/□	Example Breake EA52C/50 WKR (EA52C/50 with W, K, R)	Certified according to an applicable main body.
K (Alarm)	EA52AC/□		
F (Shunt trip)	EA52C/□		
R (Undervoltage trip)	EA62C/□		
W+K	EA102C/□		
W+R	SA32C/□		
K+R	SA32CM/□		
W+K+R	SA52C/□		
	SA52RC/□		
	SA62C/□		
	SA62RC/□		
	EG32AC/□		
	EG52AC/□		
	EG102C/□		

• 100AF 2-pole

Internal accessories	Type	Type of breaker with accessory	Certificate No.
W (Auxiliary)	SA102C/□	Example Breake SA102C/100 WK (SA102C/100 with W, K)	200401030711 6286 (Certified according to an applicable main body.)
K (Alarm)			
F (Shunt trip)			
R (Undervoltage trip)			
W+K			

• 30, 50, 60, 100AF 2-pole/3-pole

Internal accessories	Type	Type of breaker with accessory	Certificate No.
W (Auxiliary)	EA33AC/□	Example Breake EA53C/50 WKR (EA53C/50 with W, K, R)	Certified according to an applicable main body.
K (Alarm)	EA33ACM/□		
F (Shunt trip)	EA53AC/□		
R (Undervoltage trip)	EA53C/□		
W2	EA53CM/□		
W+K	EA63C/□		
W2+K	EA63CM/□		
K2	EA103AC/□		
W+K2	EA103C/□		
W2+K2	EA103CM/□		
W+F	SA33C/□		
W+R	SA33CM/□		
W2+R	SA53C/□		
K+F	SA53CM/□		
K+R	SA53RC/□		
W+K+F	SA53RCM/□		
W+K+R	SA63C/□		
K2+R	SA63CM/□		
W2+K+R	SA63RC/□		
W+K2+R	EG33AC/□		
W2+K2+R	EG33C/□		
	EG33CM/□		
	EG53AC/□		
	EG53C/□		
	EG53CM/□		
	EG63C/□		
	EG63CM/□		
	EG103AC/□		
	EG102C/□		
	EG103C/□		
	EG103CM/□		

• 100, 225AF 2-pole/3-pole

Internal accessories	Type	Type of breaker with accessory	Certificate No.
W (Auxiliary)	EA202C/□	Example Breake EA202C/225 WKF (EA202C/225 with W, K, F)	Certified according to an applicable main body.
K (Alarm)	EA203C/□		
F (Shunt trip)	EA203CM/□		
R (Undervoltage trip)	SA103C/□		
W2	SA103CM/□		
W+K	SA102RC/□		
W2+K	SA103RC/□		
K2	SA103RCM/□		
W+K2	SA202C/□		
W2+K2	SA203C/□		
W+F	SA203CM/□		
W+R	SA202RC/□		
K+F	SA203RC/□		
K+R	SA203RCM/□		
W+K+F	EG203C/□		
W+K+R	EG203CM/□		
	SG103C/□		
	SG103CM/□		
	SG103RC/□		
	SG103RCM/□		
	SG203C/□		
	SG203CM/□		
	SG203RC/□		
	SG203RCM/□		

• 400, 600, 800AF 品

Internal accessories	Type	Type of breaker with accessory	Certificate No.
W (Auxiliary)	EA402C/□	Example Breake EA402C/400 WKF (EA402C/400 with W, K, F)	Certified according to an applicable main body.
K (Alarm)	EA403C/□		
F (Shunt trip)	EA603C/□		
R (Undervoltage trip)	EA803C/□		
W2	SA402C/□		
W+K	SA403C/□		
W2+K	SA402RC/□		
K2	SA403RC/□		
W+K2	SA603RC/□		
W2+K2	SA803RC/□		
W+F	EG403C/□		
W2+F	EG603C/□		
W+R	EG803C/□		
W2+R	SG403C/□		
K+F	SG403RC/□		
K+R	SG603RC/□		
W+K+F	SG803RC/□		
W+K+R			
K2+F			
K2+R			
W2+K+F			
W2+K+R			
W+K2+F			
W+K2+R			
W2+K2+F			
W2+K2+R			

● External operating handle (optional equipment)

Handle		Applicable type	Certificate No.
N type	V type		
BZ6N10C	BZ6V10C	EA32AC,EA33AC,EA33ACM,EA52AC,EA53AC EA52C,EA53C,EA53CM,EA62C,EA63C,EA63CM EA103AC,EA102C,EA103C,EA103CM SA32C,SA33C,SA32CM,SA33CM,SA53C,SA53CM SA52C,SA53C,SA53CM,SA62C,SA63C,SA63CM SA62RC,SA63RC EG32AC,EG33AC,EG33C,EG33CM EG52AC,EG53AC,EG53C,EG53CM EG63C,EG63CM,EG103AC,EG103C,EG103CM	Certified according to an applicable main body.
BZ-N30C	BZ6V30C	EA52C,EA53C,EA53CM,EA62C,EA63C,EA63CM EA103AC,EA102C,EA103C,EA103CM SA32C,SA33C,SA32CM,SA33CM,SA53C,SA53CM	
BZ-N4	BZ6V4	SA52C,SA53C,SA53CM,SA62C,SA63C,SA63CM SA62RC,SA63RC EG32AC,EG33AC,EG33C,EG33CM EG52AC,EG53AC,EG53C,EG53CM EG63C,EG63CM,EG103AC,EG103C,EG103CM	
BZ-N6	BZ6V6	EA402C,EA403C SA402C,SA403C,SA402RC,SA403RC EG403C,SG403C,SG403RC	
BZ-N7	BZ6V7	EA603C,SA603RC,EA803C,SA803RC	

(9) Semiconductor protection fuse

type		Certificate No.
CR2LS-10/UL	CR2LS-10S/UL	200401308106632
CR2LS-20/UL	CR2LS-20S/UL	
CR2LS-30/UL	CR2LS-30S/UL	
CR2LS-50/UL	CR2LS-50S/UL	
CR2LS-75/UL	CR2LS-75S/UL	
CR2LS-100/UL	CR2LS-100S/UL	
CR2L-125	CR2L-125S	200401308106633
CR2L-140	CR2L-140S	
CR2L-150/UL	CR2L-150S/UL	
CR2L-175	CR2L-175S	200401308106635
CR2L-200/UL	CR2L-200S/UL	
CR2L-225	CR2L-225S	
CR2L-260/UL	CR2L-260S/UL	
CR2L-300	CR2L-300S	
CR2L-300/UL	CR2L-300S/UL	
CR2L-325/UL	CR2L-325S/UL	200401308106637
CR2L-350/UL	CR2L-350S/UL	
CR2L-400/UL	CR2L-400S/UL	
CR2L-450/UL	CR2L-450S/UL	
CR6L-20/UL	CR6L-20S/UL	200401308106641
CR6L-30/UL	CR6L-30S/UL	
CR6L-50/UL	CR6L-50S/UL	
CR6L-75/UL	CR6L-75S/UL	200401308106643
CR6L-100/UL	CR6L-100S/UL	
CR6L-150/UL	CR6L-150S/UL	
CR6L-200/UL	CR6L-200S/UL	200401308106645
CR6L-250/UL	CR6L-250S/UL	
CR6L-300/UL	CR6L-300S/UL	

(10) Pushbuttons, Selector Switches, Pilot Lights

● φ22 AR22/DR22, φ30 AR30/DR30 Series

a. Pushbutton switches

Bezel	Operator	Type			
		AR22		AR30	
		Momentary	Alternate	Momentary	Alternate
Round bezel	Flush round head	AR22F0R	AR22F5R	AR30F0R	AR30F5R
	Extended round head	AR22E0R	AR22E5R	AR30E0R	AR30E5R
	Flush round head (MAS correspondence)	AR22FAR	AR22FBR	AR30FAR	AR30FBR
	Extended round head (MAS correspondence)	AR22EAR	AR22EBR	AR30EAR	AR30EBR
	Extended with half guard	AR22G0R	AR22G5R	AR30G0R	AR30G5R
	Extended with full guard (24mm dia.)	AR22G3R	AR22G8R	AR30G1R	AR30G6R
	Extended with full guard (24mm dia.)	AR22G2R	—	—	—
	Mushroom head with full guard (35mm dia. metal nut)	—	—	AR30GSR	—
	Mushroom head with full guard (40mm dia.)	AR22M3R	—	AR30M3R	—
	Mushroom head (29mm dia.)	AR22M4R	AR22M9R	AR30M4R	—
	Mushroom head (40mm dia.)	AR22M0R	AR22M5R	AR30M0R	AR30M5R
	Giant head	—	—	AR30B0R	—
	Giant head with full guard	—	—	AR30B2R	—
	Giant head with full guard	—	—	AR30B3R	—
	Giant head with guard	—	—	AR30B1R	—
	Push-lock, turn-reset **	—	AR22V5R	—	AR30V5R
Pin lock	—	—	AR30GPR	—	
Square bezel	Flush square head	AR22F0S	AR22F5S	—	—
	Extended square head	AR22E0S	AR22E5S	—	—
Square and Round bezel	Flush round head	AR22F0Y	AR22F5Y	—	—
	Extended round head	AR22E0Y	AR22E5Y	—	—
	Mushroom head	AR22M4Y	—	—	—
Certificate No.	2003010305063372		2003010305063384		
Specifications Certified by right note contents.	<ul style="list-style-type: none"> ·Contact Momentary: Within 6 contact Alternate: Within 4 contact ·Color of button All in manufactured range of corresponding type 		<ul style="list-style-type: none"> ·Contact Momentary: Within 8 contact Alternate: Within 4 contact ·Color of button All in manufactured range of corresponding type 		

*1: There is no trigger action mechanism.

b. Ring selection type pushbutton switches

Bezel	Operator	Type	
		AR22	AR30
Round bezel	Pushbutton with selector ring (2-position)	AR22S1R	AR30S1R
		AR22S2R	AR30S2R
		AR22S3R	AR30S3R
		AR22S6R	AR30S6R
Certificate No.	2003010305063372	2003010305063384	
Specifications Certified by right note contents.	<ul style="list-style-type: none"> ·Contact 2NO+2NC (S2R: 2NO is also certified) ·Color of button All in manufactured range of corresponding type 		

c. Emergency stop pushbutton switches

Bezel	Operator	Type			
		AR22		AR30	
		With white arrow	No white arrow	With white arrow	No white arrow
Round bezel	Push-lock, turn-reset (29mm dia.)	AR22VSR	AR22V4R	—	—
	Push-lock, turn-reset (40mm dia.)	AR22V0R	AR22V2R	AR30V0R	AR30V2R
	Push-lock, turn-reset (65mm dia.)	—	—	AR30V1R	—
	Key-release push-lock turn-reset (40mm dia.)	—	AR22V7R	—	—
	Push-lock, pull-reset (35mm dia.)	—	AR22Q2R	—	AR30Q2R
Certificate No.	2003010305063372		2003010305063384		
Specifications Certified by right note contents.	<ul style="list-style-type: none"> ·Contact Except for Q2R type: 1NC, 1NO+1NC, 2NC, 1NO+2NC, 3NC, 2NO+2NC, 1NO+3NC, 4NC Q2R: 1NC, 1NO+1NC, 2NC ·Color of button Red (R) only 				

d. Emergency stop pushbutton switches

Bezel	Operator	Type
		AR22
		With white arrow
Round bezel	Unibody Push-lock, turn-reset (40mm dia.)	AR22VGE
Certificate No.	2005010305156646	
Specifications Certified by right note contents.	<ul style="list-style-type: none"> ·Contact 1NC, 1NO+1NC, 2NC ·Color of button Red (R) only 	

e. Illuminated pushbutton switches

Bezel	Operator	Type			
		AR22		AR30	
		Momentary	Alternate	Momentary	Alternate
Round bezel	Flush round head	AR22F0L	AR22F5L	—	—
	Extended round head	AR22E0L	AR22E5L	AR30E0L	AR30E5L
	Mushroom head (29mm dia.)	AR22M4L	AR22M9L	—	—
	Mushroom head (40mm dia.)	AR22M0L	AR22M5L	—	—
	Extended with transparent full guard (24mm dia.)	AR22G4L	AR22G9L	AR30G4L	AR30G9L
	Extended with full guard (24mm dia. with openings)	AR22G2L	AR22G7L	AR30G2L	AR30G7L
	Extended with full guard (24mm dia.)	AR22G1L	AR22G6L	AR30G3L	AR30G8L
	Push-lock, turn-reset *1	—	—	—	AR30V5L
Square bezel	Flush square head	AR22F0M	AR22F5M	—	—
	Extended square head	AR22E0M	AR22E5M	—	—
Square and Round bezel	Flush round head	AR22F0P	AR22F5P	—	—
	Extended round head	AR22E0P	AR22E5P	—	—
	Mushroom head	AR22M4P	—	—	—
Certificate No.	2003010305063372		2003010305063384		
Specifications Certified by right note contents	<ul style="list-style-type: none"> ·Contact Without transformer Momentary : Within 5 contact Alternate : Within 3 contact With transformer Momentary : Within 3 contact Alternate : Within 2 contact ·Color of button All in manufactured range of corresponding type ·Lamp LED, incandescent lamp ·Operating voltage of lamp Without transformer type, all in manufactured range of with transformer type 		<ul style="list-style-type: none"> ·Contact Without transformer Momentary : Within 6 contact Alternate : Within 3 contact With transformer Momentary : Within 4 contact Alternate : Within 2 contact ·Color of button All in manufactured range of corresponding type ·Lamp LED, incandescent lamp ·Operating voltage of lamp Without transformer type, all in manufactured range of with transformer type 		

*1: There is no trigger action mechanism.

f. Emergency stop illuminated pushbutton switches

Bezel	Operator	Type			
		AR22		AR30	
		With white arrow	No white arrow	With white arrow	No white arrow
Round bezel	Push-lock, turn-reset (29mm dia.)	AR22VSL	—	—	—
	Push-lock, turn-reset (40mm dia.)	AR22VOL	AR22V2L	AR30VOL	AR30V2L
	Push-lock, turn-reset (40mm dia. transparent in all colors)	AR22VDL	AR22VAL	—	—
Certificate No.	2003010305063372		2003010305063384		
Specifications Certified by right note contents.	<ul style="list-style-type: none"> ·Contact Without transformer 1NO, 1NO+1NC, 2NC, 1NO+2NC, 3NC With transformer 1NC, 1NO+1NC, 2NC ·Color of button Red (R) only ·Lamp LED, incandescent lamp ·Operating voltage of lamp Without transformer type, all in manufactured range of with transformer type 				

g. Emergency stop illuminated pushbutton switches

Bezel	Operator	Type
		AR22
		With white arrow
Round bezel	Unibody Push-lock, turn-reset (40mm dia.)	AR22VGF
Certificate No.	2005010305156646	
Specifications Certified by right note contents.	<ul style="list-style-type: none"> ·Contact Without transformer 1NC, 1NO+1NC, 2NC ·Color of button Red (R) only ·Lamp LED, neon lamp ·Operating voltage of lamp LED lamp Without transformer type: AC/DC24V Neon lamp Without transformer type: AC110, 120, 220, 240V 	

h. Selector switches

Bezel	Operator	Type				
		AR22		AR30		
		Standard type	Control type	Standard type	Control type	
Round bezel	Knob	AR22PR	AR22PCR	AR30PR	AR30PCR	
	Lever	AR22WR	AR22WCR	AR30WR	AR30WCR	
	Cylindrical knob	AR22RR	AR22RCR	—	—	
	Key	AR22JR	AR22JCR	AR30JR	AR30JCR	
	Key (long durability)	AR22JAR	—	AR30JAR	—	
Square bezel	Knob	AR22PY	AR22PCY	—	—	
	Lever	AR22WY	AR22WCY	—	—	
	Cylindrical knob	AR22RY	AR22RCY	—	—	
	Key	AR22JY	AR22JCY	—	—	
Certificate No.	2003010305063372			2003010305063384		
Specifications Certified by right note contents.	<ul style="list-style-type: none"> ·Contact Standard type Maintained: Within 6 contact Spring/manual return, spring turn: Within 4 contact Control type Within 4 contact ·Notches, return type All in manufactured range of corresponding type ·Color of knob, type of key All in manufactured range of corresponding type ·The position to be able to take off of the key All in manufactured range of corresponding type 			<ul style="list-style-type: none"> ·Contact Standard type Maintained: Within 8 contact Spring/manual return, spring turn: Within 4 contact Control type Within 4 contact ·Notches, return type All in manufactured range of corresponding type ·Color of knob, type of key All in manufactured range of corresponding type ·The position to be able to take off of the key All in manufactured range of corresponding type 		

i. Illuminated selector switches

Bezel	Operator	Type	
		AR22	AR30
		Standard type	Standard type
Round bezel	Knob	AR22PL	AR30PL
Square bezel	Knob	AR22PP	—
Certificate No.	2003010305063372		2003010305063384
Specifications Certified by right note contents.	<ul style="list-style-type: none"> ·Contact Without transformer Maintained: Within 4 contact Spring/manual return, spring turn: Within 3 contact With transformer Maintained: Within 3 contact Spring/manual return, spring turn: Within 2 contact ·Notches, return type All in manufactured range of corresponding type ·Color of knob, type of key All in manufactured range of corresponding type ·Lamp LED, incandescent lamp ·Operating voltage of lamp Without transformer type, all in manufactured range of with transformer type 		<ul style="list-style-type: none"> ·Contact Without transformer Maintained: Within 6 contact Spring/manual return, spring turn: Within 3 contact With transformer Maintained: Within 4 contact Spring/manual return, spring turn: Within 2 contact ·Notches, return type All in manufactured range ·Color of knob, type of key All in manufactured range ·Lamp LED, incandescent lamp ·Operating voltage of lamp Without transformer type, all in manufactured range of with transformer type

j. Pilot lights

Bezel	Lens	Type	
		DR22	DR30
Round bezel	Dome	DR22D0L	DR30D0L
	Extended round	DR22E3L	DR30E3L
	Faceted	DR22K0L	DR30K0L
Square bezel	Flush square	DR22F3M	—
	Flush square (transparent lens)	DR22F4M	DR30F4M
	Flush square (12mm high frame)	DR22F5M	—
	Extended square	DR22E3M	—
	Flush rectangular	DR22E3N	—
	Flush rectangular (transparent lens)	—	DR30F4N
	Flush square large type (transparent lens)	—	DR30M4M
Square and Round bezel	Extended round	DR22E3P	—
Certificate No.	2003010305063383		2003010305063487
Specifications Certified by right note contents.	<ul style="list-style-type: none"> ·Color of lens All in manufactured range of corresponding type ·Lamp LED, incandescent lamp ·Operating voltage of lamp Without transformer type, all in manufactured range of with transformer type Transformer-type transformer is a standard type and short-body type 		

k. Item with degree of protection IP2X

Type	AR22□ZB	AR30□ZB	DR22□ZB	DR30□ZB
Certificate No.	2003010305063372	2003010305063384	2003010305063383	2003010305063487

Note 1: Certified for all types listed in the above items a~c, e, f, h~j, except for short-body transformer of pilot lights.

Note 2: The unibody type of standard emergency stop (illuminated) pushbutton switches has degree of protection, IP2X.

I. Metal ring (Chrome plating) type

Type	AR30□ZM	DR30□ZM
Certificate No.	2003010305063384	2003010305063487

Note 1: Certified for all types listed in the above items a~c, e, f, h~j, except for AR30GSR, B0R, GPR, G4L, G9L, DR30F4M, F4N, M4M.

m. Contact protection cover option accessory

Type	AR22□Z8	AR30□Z8
Certificate No.	2003010305063372	2003010305063384

Note 1: Certified for all types listed in the above items a~c, e, f, h~j, except for AR30B0R, B1R, B2R, B3R, GPR. But there is a limit in a production range.

No illuminating; Contact 1NO+1NC, 2NO, 2NC, 1NO+3NC, 2NO+2NC, 3NO+1NC, 4NO, 4NC only.

Illuminating; Without transformer only. Contact 1NO, 1NC, 1NO+2NC, 2NO+1NC, 3NO, 3NC only.

n. Water soluble cutting fluid resistance/tropicalization

Type	AR22□Z9	AR30□Z9	DR22□Z9	DR30□Z9
Certificate No.	2003010305063372	2003010305063384	2003010305063383	2003010305063487

Note 1: Certified for all types listed in the above items a~c, e, f, h~j, except for DR30F4M F4N, M4M.

● φ 22 AM22·DM22 Series

a. Pushbutton switches

Bezel	Operator	Type	
		Momentary	Alternate
Round bezel	Flush round head	AM22F0R	AM22F5R
	Extended round head	AM22E0R	AM22E5R
	Mushroom head (29mm dia.)	AM22M4R	—
	Mushroom head (40mm dia.)	AM22M0R	AM22M5R
	Extended with full guard (24mm dia.)	AM22G3R	AM22G8R
	Mushroom head with full guard (40mm dia.)	AM22M3R	AM22M8R
Certificate No.		2003010305063372	
Specifications Certified by right note contents.		·Contact Momentary: Momentary: Within 8 contact Alternate: Momentary: Within 4 contact	·Color of button All in manufactured range of corresponding type

b. Emergency stop pushbutton switches

Bezel	Operator	Type	
		With white arrow	
Round bezel	Push-lock, turn-reset (29mm dia.)	AM22VSE	
	Push-lock, turn-reset (40mm dia.)	AM22V0E	
Certificate No.		2003010305063372	
Specifications Certified by right note contents.		·Contact 1NC, 1NO+1NC, 2NC, 1NO+2NC, 3NC, 2NO+2NC, 1NO+3NC, 4NC	·Color of button Red(R) only

c. Illuminated pushbutton switches

Bezel	Operator	Type	
		Momentary	Alternate
Round bezel	Flush round head	AM22F0L	AM22F5L
	Extended round head	AM22E0L	AM22E5L
	Mushroom head (29mm dia.)	AM22M4L	AM22M9L
	Mushroom head (40mm dia.)	AM22M0L	AM22M5L
	Extended with transparent full guard (24mm dia.)	AM22G4L	AM22G9L
	Extended with full guard (24mm dia. with openings)	AM22G2L	AM22G7L
Certificate No.		2003010305063372	
Specifications Certified by right note contents.		·Contact Without transformer Maintained: Within 6 contact Alternate: Within 3 contact With transformer Maintained: Within 4 contact Alternate: Within 2 contact	·Color of button All in manufactured range of corresponding type ·Lamp LED, incandescent lamp ·Operating voltage of lamp Without transformer type, all in manufactured range of with transformer type

d. Emergency stop illuminated pushbutton switches

Bezel	Operator	Type	
		With white arrow	
Round bezel	Push-lock, turn-reset (29mm dia.)	AM22VSF	
	Push-lock, turn-reset (40mm dia.)	AM22V0F	
	Push-lock, turn-reset (40mm dia. transparent in all colors)	AM22VDF	
Certificate No.		2003010305063372	
Specifications Certified by right note contents.		·Contact Without transformer 1NC, 1NO+1NC, 2NC, 1NO+2NC, 3NC With transformer 1NC, 1NO+1NC, 2NC	·Color of button Red(R) only ·Lamp LED, incandescent lamp ·Operating voltage of lamp Without transformer type, all in manufactured range of with transformer type

e. Selector switches

Bezel	Operator	Type	
		Standard type	Control type
Round bezel	Knob	AM22PR	AM22PCR
	Lever	AM22WR	AM22WCR
	Key	AM22JR	AM22JCR
Certificate No.		2003010305063372	
Specifications Certified by right note contents.		<ul style="list-style-type: none"> Contact Standard type Maintained: Within 8 contact Spring/manual return, spring turn: Within 4 contact Control type Within 4 contact 	<ul style="list-style-type: none"> Notches, return type All in manufactured range of corresponding type Color of knob, type of key All in manufactured range of corresponding type The position to be able to take off of the key All in manufactured range of corresponding type

f. Illuminated selector switches

Bezel	Operator	Type	
		Standard type	
Round bezel	Knob	AM22PL	
Certificate No.		2003010305063372	
Specifications Certified by right note contents.		<ul style="list-style-type: none"> Contact Without transformer Maintained: Within 6 contact Spring/manual return, spring turn: Within 3 contact With transformer Maintained: Within 4 contact Spring/manual return, spring turn: Within 2 contact 	<ul style="list-style-type: none"> Notches, return type All in manufactured range Color of knob All in manufactured range Lamp LED, incandescent lamp Operating voltage of lamp Without transformer type, all in manufactured range of with transformer type

g. Pilot lights

Bezel	Lens	Type	
		Standard type	
Round bezel	Dome	DM22D0L	
	Extended round	DM22E3L	
	Faceted	DM22K0L	
Certificate No.		2003010305063383	
Specifications Certified by right note contents.		<ul style="list-style-type: none"> Color of lens All in manufactured range of corresponding type Lamp LED, incandescent lamp 	<ul style="list-style-type: none"> Operating voltage of lamp Without transformer type, all in manufactured range of with transformer type Transformer-type transformer is a standard type and short-body type

h. Item with degree of protection IP2X (IP20)

Type	AM22□ZB	DM22□ZB
Certificate No.	2003010305063372	2003010305063383

Note: Certified for all types listed in the above items, except for short-body transformer of pilot lights a~g.

i. Metal ring (aluminum) type

Type	AM22□ZM	DM22□ZM
Certificate No.	2003010305063372	2003010305063383

Note 1: Certified for all types listed in the above items a, c, e~g, except for AM22M3R, M8R, G4L, G9L.

j. Contact protection cover option accessory

Type	AR22□Z8
Certificate No.	2003010305063372

Note 1: Certified for all types listed in the above items a~f. But there is a limit in a production range.
 No illuminating; Contact 1NO+1NC, 2NO, 2NC, 1NO+3NC, 2NO+2NC, 3NO+1NC, 4NO, 4NC only.
 Illuminating; Without transformer only. Contact 1NO, 1NC, 1NO+2NC, 2NO+1NC, 3NO, 3NC only.

k. Water soluble cutting fluid resistance/tropicalization

Type	AM22□Z9	DM22□Z9
Certificate No.	2003010305063372	2003010305063383

Note 1: Certified for all types listed in the above items a~g.

●AG28, DG28 series

a. Pushbutton switches

Bezel	Operator	Type	
		Momentary	Alternate
Square bezel	Flush square head	AG28F0S	AG28F5S
	Flush with full guard	AG28G2S	AG28G7S
Certificate No.		2003010305063372	
Specifications Certified by right note contents.		<ul style="list-style-type: none"> Contact Momentary: Within 6 contact Alternate: Within 4 contact 	<ul style="list-style-type: none"> Color of button All in manufactured range of corresponding type

b. Ring selection type pushbutton switches

Bezel	Operator	Type	
		Standard type	
Square and Round bezel	Pushbutton with selector ring (2-position)	AG28S2Y	
		AG28S6Y	
Certificate No.		2003010305063372	
Specifications Certified by right note contents.		<ul style="list-style-type: none"> Contact 2NO+2NC (S2Y: 2NO is also certified) 	<ul style="list-style-type: none"> Color of button All in manufactured range

c. Illuminated pushbutton switches

Bezel	Operator	Type	
		Momentary	Alternate
Square bezel	Flush square head	AG28F0M	AG28F5M
	Flush with full guard	AG28G2M	AG28G7M
Certificate No.		2003010305063372	
Specifications Certified by right note contents.		<ul style="list-style-type: none"> ·Contact Without transformer <li style="padding-left: 20px;">Momentary: Within 5 contact <li style="padding-left: 20px;">Alternate: Within 3 contact With transformer <li style="padding-left: 20px;">Momentary: Within 3 contact <li style="padding-left: 20px;">Alternate: Within 2 contact 	<ul style="list-style-type: none"> ·Color of button All in manufactured range of corresponding type ·Lamp LED, incandescent lamp ·Operating voltage of lamp Without transformer type, all in manufactured of with transformer type

d. Selector switches

Bezel	Operator	Type	
		Standard type	Control type
Square and Round bezel	Knob	AG28PY	AG28PCY
Certificate No.		2003010305063372	
Certified by right note contents.		<ul style="list-style-type: none"> ·Contact Standard type <li style="padding-left: 20px;">Maintained: Within 6 contact <li style="padding-left: 20px;">Spring/manual return, spring turn: Within 4 contact Control type <li style="padding-left: 20px;">Within 4 contact 	<ul style="list-style-type: none"> ·Notches, return type All in manufactured range of corresponding type ·Color of knob All in manufactured range of corresponding type

e. Illuminated selector switches

Bezel	Operator	Type	
		Standard type	
Square and Round bezel	Knob	AG28PP	
Certificate No.		2003010305063372	
Specifications Certified by right note contents.		<ul style="list-style-type: none"> ·Contact Without transformer <li style="padding-left: 20px;">Maintained: Within 4 contact <li style="padding-left: 20px;">Spring/manual return, spring turn: Within 3 contact With transformer <li style="padding-left: 20px;">Maintained: Within 3 contact <li style="padding-left: 20px;">Spring/manual return, spring turn: Within 2 contact 	<ul style="list-style-type: none"> ·Notches, return type All in manufactured range ·Color of knob All in manufactured range ·Lamp LED, incandescent lamp ·Operating voltage of lamp Without transformer type, all in manufactured range of with transformer type

f. Pilot lights

Bezel	Lens	Type
Square bezel	Flush square head	DG28F3M
Certificate No.		2003010305063383
Specifications Certified by right note contents.		<ul style="list-style-type: none"> ·Color of lens All in manufactured range ·Lamp LED, incandescent lamp
		<ul style="list-style-type: none"> ·Operating voltage of lamp Without transformer type, all in manufactured range of with transformer type

g. Item with terminal supporting IP2X

Type	AG28□ZB	DG28□ZB
Certificate No.	2003010305063372	2003010305063383

Note: Certified for all types listed in the above items, except for short-body transformer of pilot lights a~f.

h. Contact protection cover option accessory

Type	AG28□Z8
Certificate No.	2003010305063372

Note 1: Certified for all types listed in the above items a~e. But there is a limit in a production range.
 No illuminating ; Contact 1NO+1NC, 2NO, 2NC, 1NO+3NC, 2NO+2NC, 3NO+1NC, 4NO, 4NC only.
 Illuminating; Without transformer only. Contact 1NO, 1NC, 1NO+2NC, 2NO+1NC, 3NO, 3NC only.

i. Water soluble cutting fluid resistance/tropicalization

Type	AG28□Z9	DG28□Z9
Certificate No.	2003010305063372	2003010305063383

Note 1: Certified for all types listed in the above items a~f.

●φ16 AH164, 165, 165-2 Series

a. Pushbutton switches

Operator	Type					
	AH164		AH165		AH165-2	
	Momentary	Alternate	Momentary	Alternate	Momentary	Alternate
Flush round head	—	—	—	—	AH165-2F	AH165-2F5
Extended round head	AH164-E	AH164-E5	AH165-E	AH165-E5	AH165-2E	AH165-2E5
Extended square head	—	—	—	—	AH165-2SE	AH165-2SE5
Concave square head	—	—	—	—	AH165-2SCE	AH165-2SCE5
Flush square head	AH164-SF	AH164-SF5	AH165-SF	AH165-SF5	AH165-2SF	AH165-2SF5
Flush rectangular head	AH164-TF	AH164-TF5	AH165-TF	AH165-TF5	—	—
Flush square head with guard	AH164-SGF	AH164-SGF5	AH165-SGF	AH165-SGF5	—	—
Flush rectangular head with guard	AH164-TGF	AH164-TGF5	AH165-TGF	AH165-TGF5	—	—
Mushroom head (round bezel)	—	—	—	—	AH165-2M	—
Mushroom head (square bezel)	—	—	—	—	AH165-2YM	—
Mushroom head (23.5mm dia.)	AH164-M	AH164-M5	AH165-M	AH165-M5	—	—
Convex square head	AH164-SM	AH164-SM5	AH165-SM	AH165-SM5	—	—
Convex rectangular head	AH164-TM	AH164-TM5	AH165-TM	AH165-TM5	—	—
Push-locked (32mm dia. round bezel) ^{*1}	—	—	—	AH165-V	—	AH165-2V
Push-locked (32mm dia. square bezel) ^{*1}	—	—	—	—	—	AH165-2YV
Push-locked type (40mm dia.) ^{*1}	—	—	—	AH165-V1	—	—
Certificate No.	2003010305071068					
Specifications Certified by right note contents.	<ul style="list-style-type: none"> ·Contact Except AH165-V, V1: 1NO+1NC, 2NO+2NC, 3NO+3NC AH165-V, V1: 1NC, 2NC ·Color of button Except AH165-V, V1: all in manufactured range of corresponding type AH165-V, V1: red(R) only ·Terminal shape Except AH165-V, V1: for soldering and tab, and for wrapping AH165-V, V1: soldering and tab only, soldering is for exclusive use 					

*1 There is no trigger action mechanism.

b. Ring selection type pushbutton switches

Operator	Type		
	AH165-2		
Pushbutton with selector ring (round bezel)	AH165-2S2		
Pushbutton with selector ring (square bezel)	AH165-2YS2		
Certificate No.	2003010305071068		
Specifications Certified by right note contents.	<ul style="list-style-type: none"> ·Contact 2NO+2NC 	<ul style="list-style-type: none"> ·Color of button All in manufactured range 	<ul style="list-style-type: none"> ·Terminal shape For soldering and tab, and for wrapping

c. Emergency stop pushbutton switches

Operator	Type		
	AH165		
Push-lock, turn-reset (32mm dia.)	AH165-V5		
Push-lock, turn-reset (40mm dia.)	AH165-V6		
Certificate No.	2003010305071068		
Specifications Certified by right note contents.	<ul style="list-style-type: none"> ·Contact 1NC, 2NO 	<ul style="list-style-type: none"> ·Color of button Red(R) only 	<ul style="list-style-type: none"> ·Terminal shape Soldering and tab only, soldering is for exclusive use

d. Illuminated pushbutton switches

Operator	Type					
	AH164		AH165		AH165-2	
	Momentary	Alternate	Momentary	Alternate	Momentary	Alternate
Flush round head	—	—	—	—	AH165-2FL	AH165-2FL5
Extended round head	AH164-L	AH164-L5	AH165-L	AH165-L5	AH165-2EL	AH165-2EL5
Extended square head	—	—	—	—	AH165-2SEL	AH165-2SEL5
Concave square head	—	—	—	—	AH165-2SCL	AH165-2SCL5
Flush square head	AH164-SL	AH164-SL5	AH165-SL	AH165-SL5	AH165-2SFL	AH165-2SFL5
Flush rectangular head	AH164-TL	AH164-TL5	AH165-TL	AH165-TL5	—	—
Flush square head with guard	AH164-SGL	AH164-SGL5	AH165-SGL	AH165-SGL5	—	—
Flush rectangular head with guard	AH164-TGL	AH164-TGL5	AH165-TGL	AH165-TGL5	—	—
Mushroom head (32mm dia. round bezel)	—	—	—	—	AH165-2ML	—
Mushroom head (32mm dia. square bezel)	—	—	—	—	AH165-2YML	—
Push-locked (32mm dia. round bezel) *1	—	—	—	—	—	AH165-2VL
Push-locked (32mm dia. square bezel) *1	—	—	—	—	—	AH165-2YVL
Certificate No.	2003010305071068					
Specifications Certified by right note contents.	<ul style="list-style-type: none"> ·Contact Without transformer 1NO+1NC, 2NO+2NC, 3NO+3NC With transformer 1NO+1NC, 2NO+2NC ·Color of button All in manufactured range of corresponding type ·Lamp LED *2, incandescent lamp, Neon ·Lamp voltage LED Without transformer type: DC6, 12, 24V With transformer type: AC110, 220V Incandescent lamp Without transformer type: AC/DC5, 12, 24V With transformer type: AC110, 220V Neon lamp Without transformer type: AC110, 120, 220, 240V ·Terminal shape For soldering and tab, and for wrapping 					

*1: There is no trigger action mechanism

*2: The spot LED type and 2-color LED type have not been approved

e. Selector switches

Operator	Type		
	AH164	AH165	AH165-2
Knob (round bezel)	—	—	AH165-2P
Knob (rectangular bezel)	AH164-P	AH165-P	—
Knob (square bezel)	AH164-SP	AH165-SP	AH165-2YP
Key (round bezel)	—	—	AH165-2J
Key (rectangular bezel)	AH164-J	AH165-J	—
Key (square bezel)	AH164-SJ	AH165-SJ	AH165-2YJ
Knob, 45° notch (rectangular bezel)	AH164-PK	AH165-PK	—
Knob, 45° notch (square bezel)	AH164-SPK	AH165-SPK	—
Key, 45° notch (rectangular bezel)	AH164-JK	AH165-JK	—
Key, 45° notch (square bezel)	AH164-SJK	AH165-SJK	—
Certificate No.	2003010305071068		
Specifications certified by right note contents.	<ul style="list-style-type: none"> ·Contact 1NO+1NC, 2NO+2NC, 3NO+3NC ·Notches, return type All in manufactured range of corresponding type ·Color of knob All in manufactured range of corresponding type ·Type of key A, B, C, D, E, F ·The position to be able to take off of the key All in manufactured range of corresponding type ·Terminal shape For soldering and tab, and for wrapping 		

f. Selector switches

Operator	Type	
	AH165	
Key (rectangular bezel)	AH165-JM2	
Key (round bezel)	AH165-RJM2	
Certificate No.	2003010305071068	
Specifications certified by right note contents.	<ul style="list-style-type: none"> ·Contact 1NO+1NC, 2NO+2NC ·Notches, return type 2-notches, maintained only ·Type of key A, B, C, D, E, F ·The position to be able to take off of the key All in manufactured range ·Terminal shape For soldering and tab 	

g. Illuminated selector switches

Operator	Type
	AH165
Knob (round bezel)	AH165-2PL
Certificate No.	2003010305071068
Specifications certified by right note contents.	<ul style="list-style-type: none"> ·Contact Without transformer 1NO+1NC, 2NO+2NC ·Notches, return type All in manufactured range ·Color of knob All in manufactured range ·Lamp LED, incandescent lamp ·Operating voltage of lamp LED Without transformer type: DC6, 12, 24V Incandescent lamp Without transformer type: AC/DC5, 12, 24V ·Terminal shape For soldering and tab

h. Pilot lights

Lens	Type
	AH164 AH165 AH165-2
Flush round	— AH165-2Z
Extended round	AH164-Z AH165-Z AH165-2ZE
Extended square	— AH165-2SZE
Flush square	AH164-ZS AH165-ZS AH165-2SZ
Flush rectangular	AH164-ZT AH165-ZT —
Certificate No.	2003010305071044
Specifications certified by right note contents.	<ul style="list-style-type: none"> ·Color of Lens All in manufactured range of corresponding type ·lamp LED *1, incandescent lamp, neon lamp ·Operating voltage of lamp LED Without transformer type: DC6, 12, 24V With transformer type: AC110, 220V Incandescent lamp Without transformer type: AC/DC5, 12, 24V With transformer type: AC110, 220V Neon lamp Without transformer type: AC110, 120, 220, 240V ·Terminal shape For soldering and tab, and for wrapping

*1: The spot LED type and 2-color LED type have not been approved

i. Lock terminal series

Model	Operator/Lens	Return method	Type	Certificate No.
Pushbutton switches	Flush square head with guard	Momentary	AH165-2SG	2003010305071068
		Alternate	AH165-2SG5	
Illuminated pushbutton switches	Flush square head with guard	Momentary	AH165-2SGL	
		Alternate	AH165-2SGL5	
Selector switches	Knob (square bezel)	2 notch manual return	AH165-2SP2	
		2 notch automatic return	AH165-2SP0	
	Key (square bezel)	2 notch manual return	AH165-2SJ2	
		2 notch automatic return	AH165-2SJ0	
Pilot light	Flush rectangular	—	AH165-ZT1	2003010305071044
Specifications certified by right note contents.	<ul style="list-style-type: none"> ·Contact Only 1NO+1NC(illuminated type is only without transformer type) ·Color of plate, Color of color sheet, Color of knob All in manufactured range of corresponding type ·Lamp LED, incandescent lamp ·Operating voltage of lamp All in manufactured range of without transformer type ·Type of key A, B, C, D, E, F ·The position to be able to take off of the key All in manufactured range ·Terminal shape For soldering and tab 			

●φ16 AH16P, 16P-2 Series

a. Pushbutton switches(Operator)

Operator	Type			
	AH16P		AH16P-2	
	Momentary	Alternate	Momentary	Alternate
Flush round head	—	—	AH16P-2F	AH16P-2F5
Extended round head	AH16P-E	AH16P-E5	AH16P-2E	AH16P-2E5
Extended square head	—	—	AH16P-2SE	AH16P-2SE5
Concave square head	—	—	AH16P-2SCE	AH16P-2SCE5
Flush square head	AH16P-SF	AH16P-SF5	AH16P-2SF	AH16P-2SF5
Flush rectangular head	AH16P-TF	AH16P-TF5	—	—
Flush square head with guard	AH16P-SGF	AH16P-SGF5	—	—
Flush rectangular head with guard	AH16P-TGF	AH16P-TGF5	—	—
Mushroom head (round bezel)	—	—	AH16P-2M	—
Mushroom head (square bezel)	—	—	AH16P-2YM	—
Mushroom head (32.5mm dia.)	AH16P-M	AH16P-M5	—	—
Convex square head	AH16P-SM	AH16P-SM5	—	—
Convex rectangular head	AH16P-TM	AH16P-TM5	—	—
Push-locked (32mm dia. round bezel) *1	—	—	—	AH16P-2V
Push-locked (32mm dia. square bezel) *1	—	—	—	AH16P-2YV
Certificate No.	2003010305071068			
Specifications certified by right note contents.	<ul style="list-style-type: none"> ·Color of button All in manufactured range of corresponding type 			

*1: There is no trigger action mechanism

b. Ring selection type pushbutton switches(Operator)

Operator	Type AH16P-2
Pushbutton with selector ring (round bezel)	AH16P-2S2
Pushbutton with selector ring (square bezel)	AH16P-2YS2
Certificate No.	2003010305071068
Specifications certified by right note contents.	·Color of button All in manufactured range of corresponding type

c. Illuminated pushbutton switches(Operator)

Operator	Type		AH16P-2	
	Momentary	Alternate	Momentary	Alternate
Flush round head	—	—	AH16P-2FL	AH16P-2FL5
Extended round head	AH16P-L	AH16P-L5	AH16P-2EL	AH16P-2EL5
Extended square head	—	—	AH16P-2SEL	AH16P-2SEL5
Concave square head	—	—	AH16P-2SCL	AH16P-2SCL5
Flush square head	AH16P-SL	AH16P-SL5	AH16P-2SFL	AH16P-2SFL5
Flush rectangular head	AH16P-TL	AH16P-TL5	—	—
Flush square head with guard	AH16P-SGL	AH16P-SGL5	—	—
Flush rectangular head with guard	AH16P-TGL	AH16P-TGL5	—	—
Mushroom head (32mm dia. round bezel)	—	—	AH16P-2ML	—
Mushroom head (32mm dia. square bezel)	—	—	AH16P-2YML	—
Push-lock, turn-reset (32mm dia. round bezel) *1	—	—	—	AH16P-2VL
Push-lock, turn-reset (32mm dia. square bezel) *1	—	—	—	AH16P-2VVL
Certificate No.	2003010305071068			
Specifications certified by right note contents.	·Color of button All in manufactured range of corresponding type		·Operating voltage of lamp LED Without transformer type:DC6, 12, 24V Incandescent lamp Without transformer type: AC/DC5, 12, 24V	

*1: There is no trigger action mechanism.

d. Selector switches (Operator)

Operator	Type AH16P	AH16P-2
Knob (round bezel)	—	AH16P-2P
Knob (rectangular bezel)	AH16P-P	—
Knob (square bezel)	AH16P-SP	AH16P-2YP
Key (round bezel)	—	AH16P-2J
Key (rectangular bezel)	AH16P-J	—
Key (square bezel)	AH16P-SJ	AH16P-2YJ
Certificate No.	2003010305071068	
Specifications certified by right note contents.	·Notches, return type All in manufactured range of corresponding type ·Color of knob Black only	·Type of key A, B, C, D, E, F ·The position to be able to take off of the key All in manufactured range of corresponding type

e. Pilot lights

Lens	Type AH16P	AH16P-2
Flush round	—	AH16P-2Z
Extended round	AH16P-Z	AH16P-2ZE
Extended square	—	AH16P-2SZE
Flush square	AH16P-ZS	AH16P-2SZ
Flush rectangular	AH16P-ZT	—
Certificate No.	2003010305071044	
Specifications certified by right note contents.	·Color of lens All in manufactured range of corresponding type ·Lamp LED, incandescent lamp	·Operating voltage of lamp LED Without transformer type:DC6, 12, 24V Incandescent lamp Without transformer type: AC/DC5, 12, 24V

f. Contact part(AH16P and AH16P-2 sharing)

Usage	Contact	Type
Illuminated	1NO+1NC	AH16P-L11
	2NO+2NC	AH16P-L22
Non-Illuminated	1NO+2NC	AH16P-11
	2NO+2NC	AH16P-22
Pilot light	—	AH16P-Z1
Certificate No.	2003010305071068	

(11) Circuit Protectors

● CP-F series

Operating characteristic	Type			Certificate No.
	1-pole item	2-pole item	3-pole item	
Momentary type	OP31FI	CP32FI	CP33FI	2003010309067080
Middle-speed type	CP31FM	CP32FM	CP33FM	
Low-speed type	CP31FS	CP32FS	CP33FS	

Note1: Certified accessories (with auxiliary switch, alarm switch): all in manufactured range

Note2: The type with delay unit is also certified.

● CP-T series

Operating characteristic	Type			Certificate No.
	1-pole item	2-pole item	3-pole item	
Momentary type	OP31TI	CP32TI	CP33TI	2003010309067080
Middle-speed type	CP31TM	CP32TM	CP33TM	
Low-speed type	CP31TS	CP32TS	CP33TS	

Note1: Certified accessories (with auxiliary switch, alarm switch): all in manufactured range

Note2: Types for both AC circuit and DC circuit are certified.

(12) Cam Switches

Operator mechanism	Type	Certificate No.
Manual reset	AK22-1M	2003010309067080
Automatic reset	AK22-1A	
Mixed reset	AK22-1C	

Note1: Certified contact configuration: all in manufactured range

Note2: Certified shape and color of handle: all in manufactured range

Note3: Certified key type and key removal position: all in manufactured range

6.8. Related Information for CCC

(1) Product Quality Law

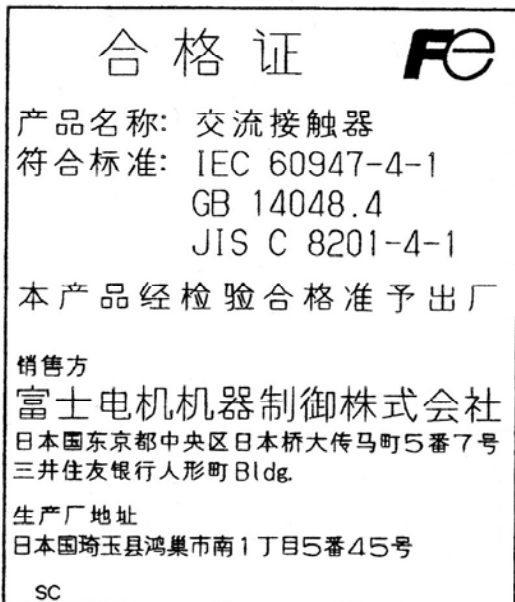
a. What is Product Quality Law?

1. Enforced on September 1, 1993
2. To cover all the products distributed and sold in the People's Republic of China (Article 2)
3. Sampling inspection is carried out in the market. Products ready for sale either in the market or in companies' products warehouses shall be subject to sampling inspection. (Article 15)
4. This law has penalty clauses requiring suspension of production and sales or imposing fines. (Articles 49 to 72)

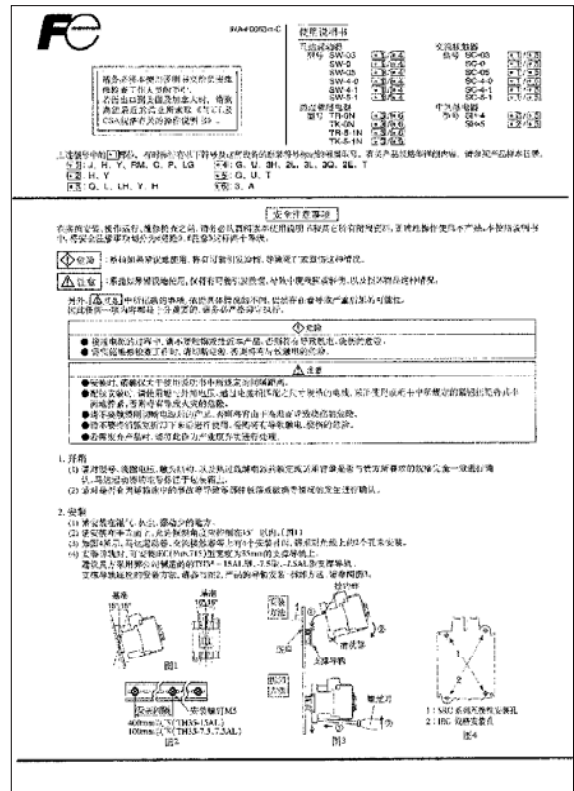
b. What are required by Product Quality Law? (Responsibilities and duties of manufacturers and sellers for their products quality)

1. Conformity with Chinese Standards about quality. (Article 26)
2. Marking in Chinese on products or packages. (Article 27)
 - Certificate of successful product quality inspection
 - Product name, factory name, factory address
 - Instruction manual
 - Notes (Warning indication, etc.)

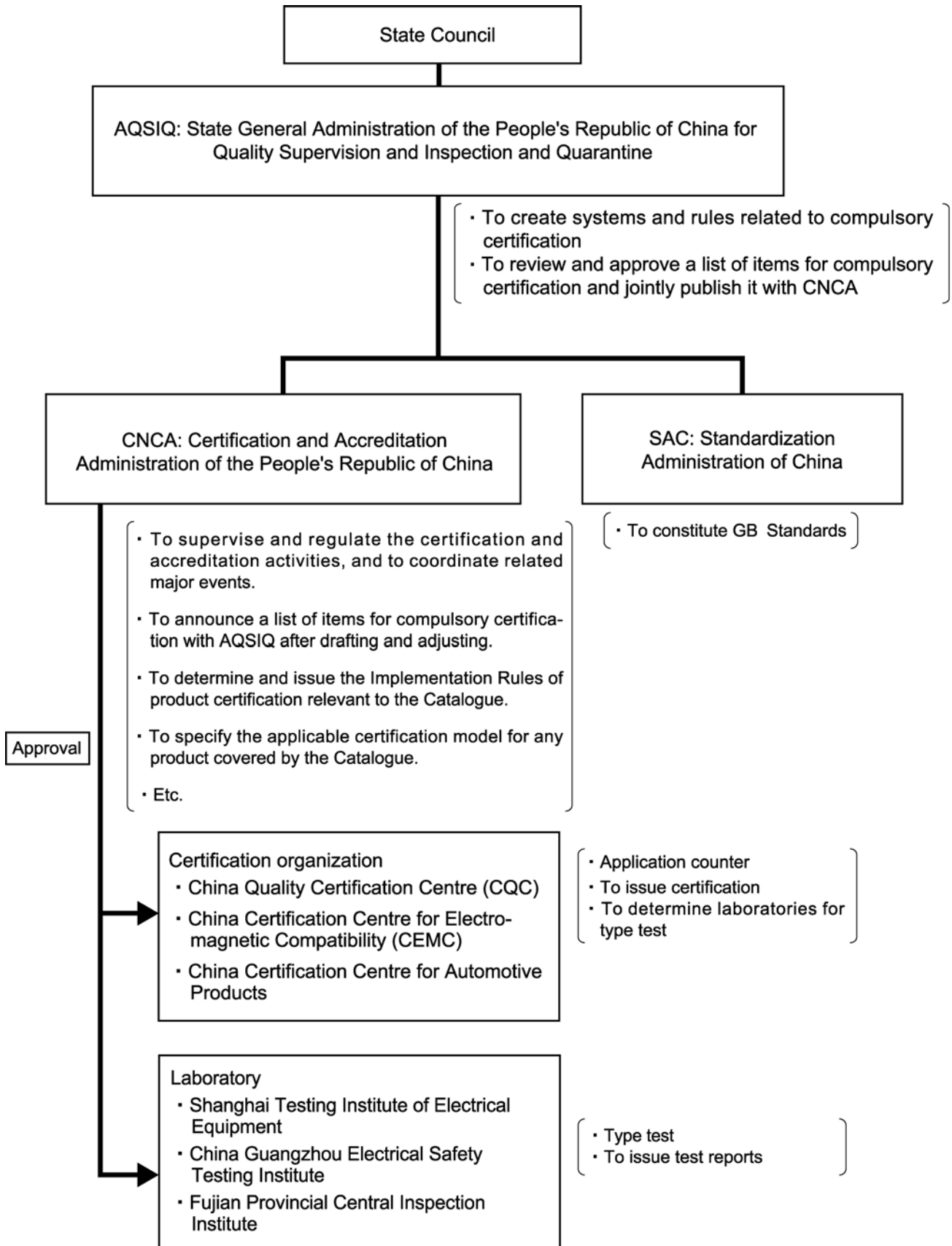
Sample of a certificate of successful product quality inspection



Sample of an instruction manual in Chinese

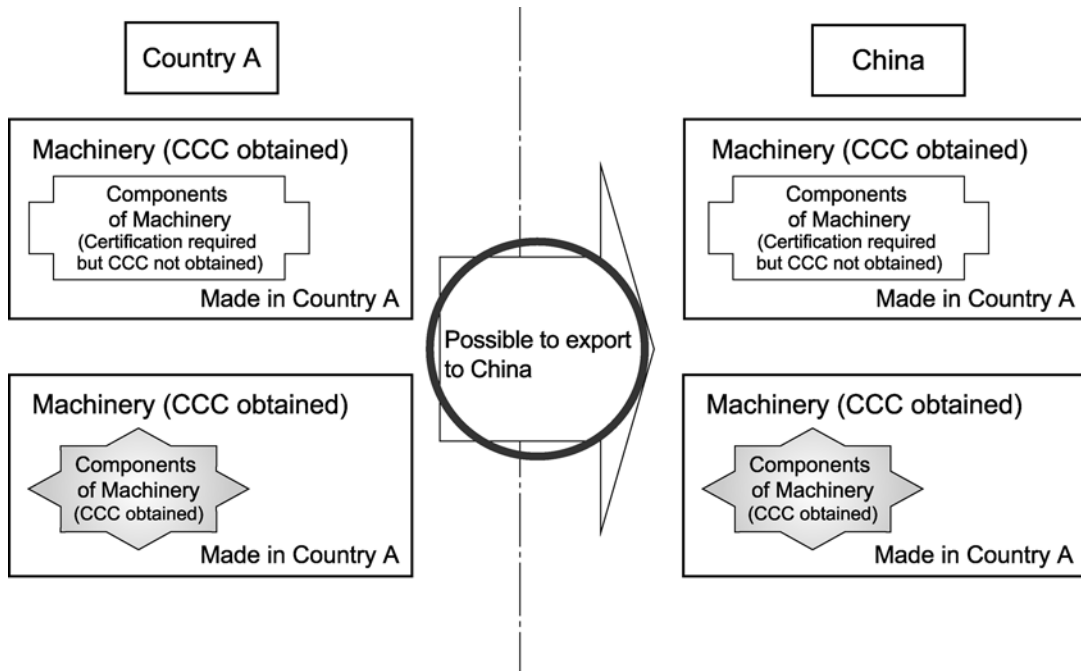


(2) CCC-related organizations



(3) In case of exporting machinery from country A to China (Relations between FUJI products and machinery)

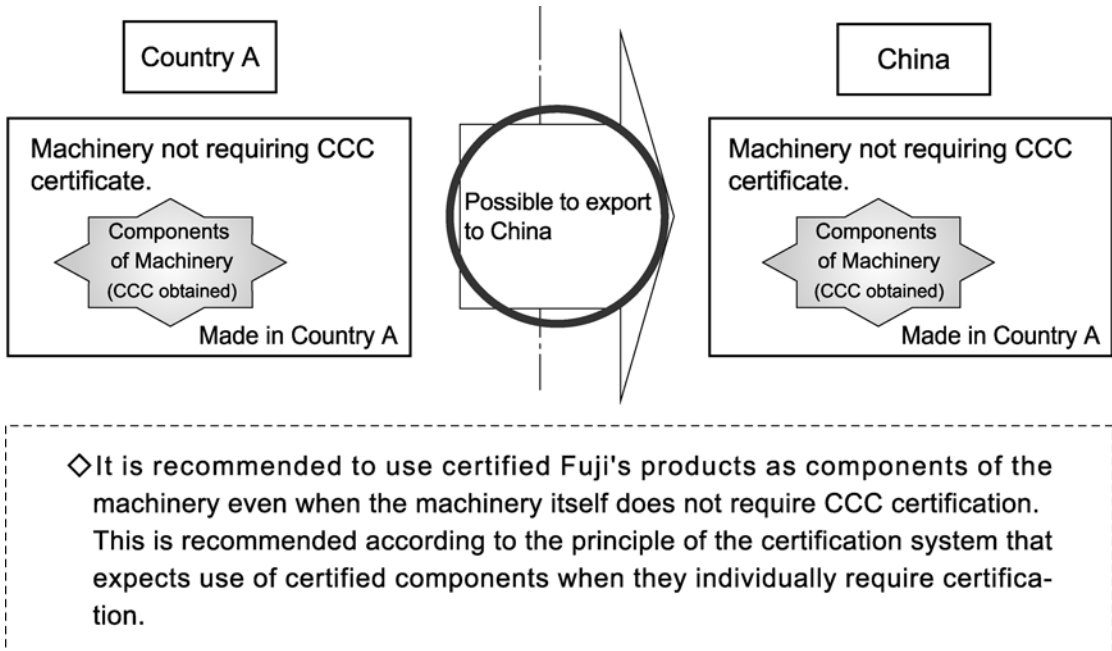
a. Exporting machinery from Country A to China (in case such machinery requires CCC)



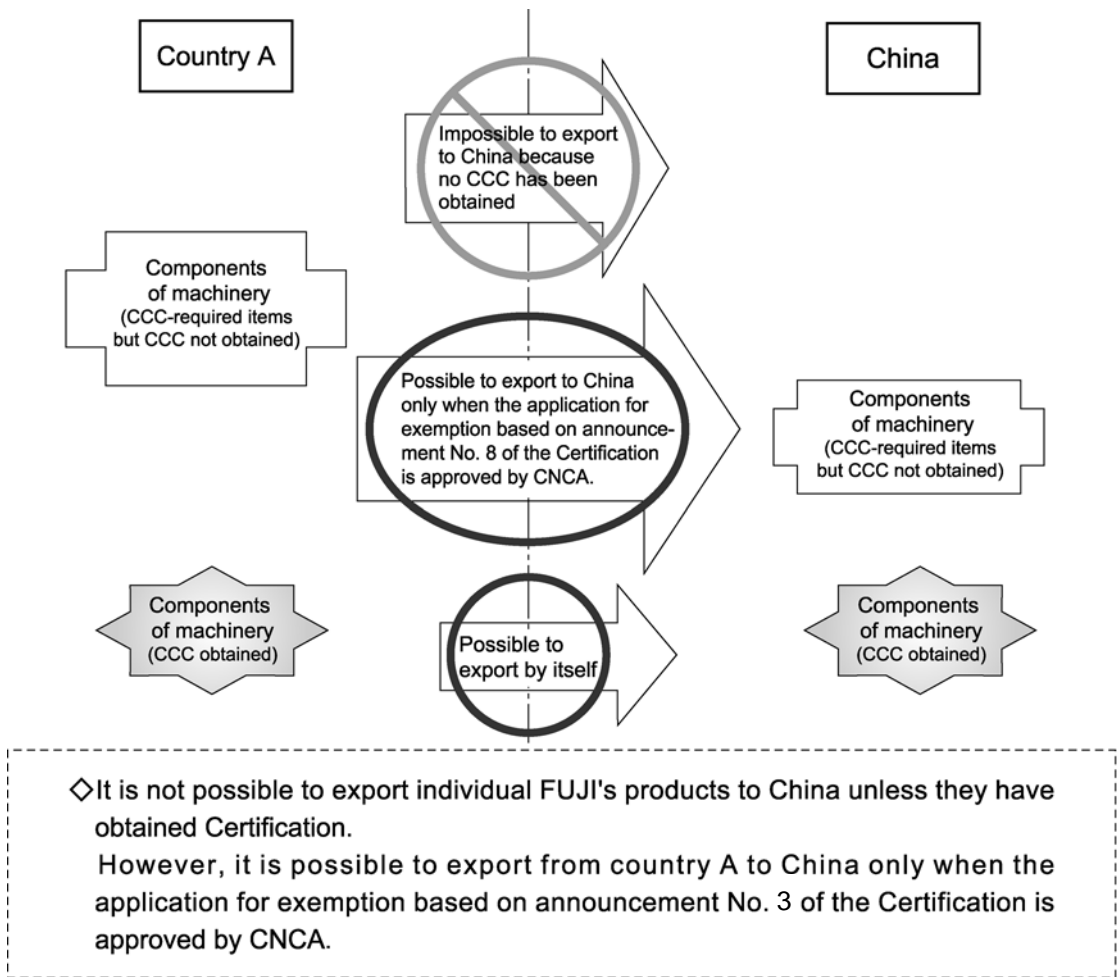
◇ If the machinery itself requires certification (farming machines and welding machines are included in the Product catalogue*1), the machinery certification must be obtained. If the machinery certification has been obtained, the machinery can be exported to China even when Fuji's products used as its components have not been certified (though they require certification as individual products). If certified Fuji's products are used in the machinery at the time of application for machinery certification, however, that portion is exempted from the test, resulting in shortening of the period for obtaining the certification. It is, therefore, recommended to use certified products (if such products require certification) as components of the machinery applied for certification.

*1: Refer to "Implementation Rules for compulsory products certification" published by CNCA for further details of the farming and welding machines.

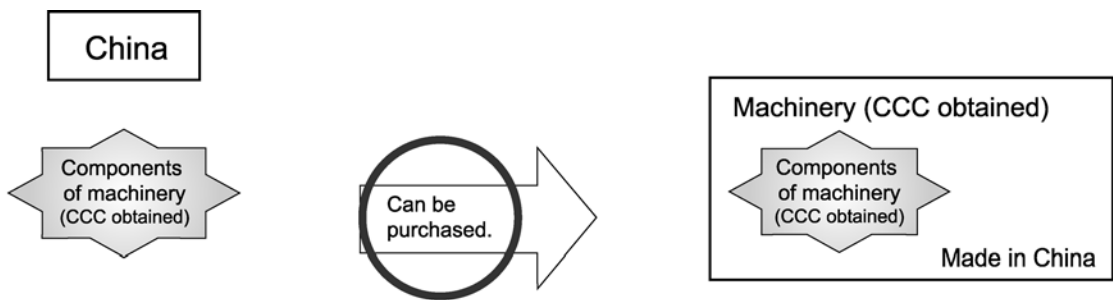
- b. Exporting machinery from Country A to China
 (in case such machinery does not require CCC certification. example: machine tools, semiconductor manufacturing equipment, elevators, etc.)



- c. Exporting components (FUJI's products) for machinery from Country A to China (example: spare parts, etc.)



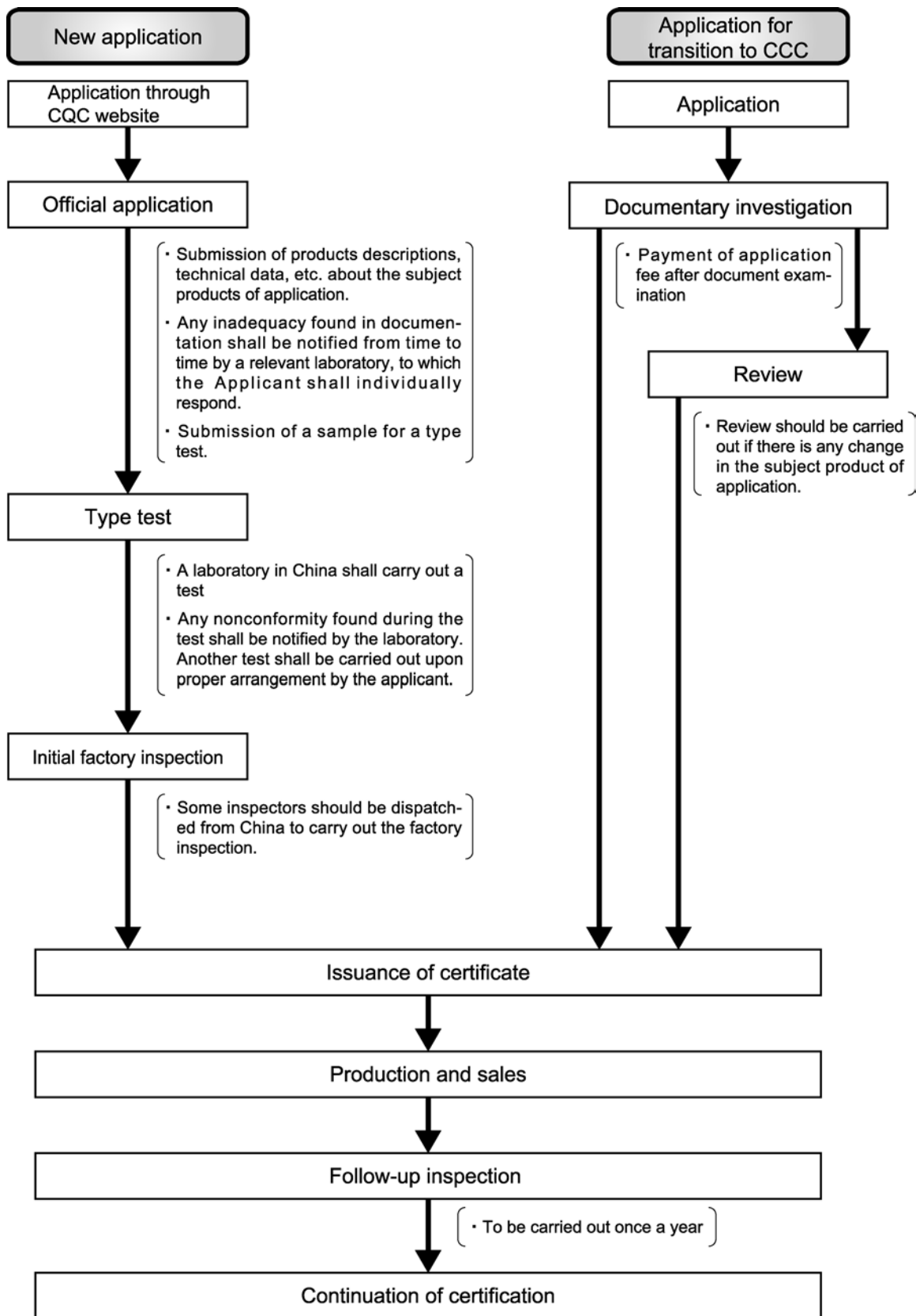
(4) In the case of purchasing FUJI's products for use in machinery in China



◇ To purchase parts for machinery in China, you must purchase certified products. However, you can use them only when your application for an exemption according to announcement No. 3 of the certification is approved by the CNCA.

(5) Procedures from application to acquisition and maintenance of Certification

(New application, application for transition to CCC)



(6) Homepage addresses of CCC-related organizations

State General Administration of the People's Republic of China for Quality Supervision and Inspection and Quarantine (AQSIQ)

<http://www.aqsiq.gov.cn/cms/template/index.html>

Certification and Accreditation Administration of the People's Republic of China (CNCA)

<http://www.cnca.gov.cn/>

China Export Import Quality and Quantity Certification Centre (CQC)

<http://www.cqc.com.cn/>

Shanghai Testing Institute of Electrical Equipment

<http://www.tilva.com/>

(page providing boards-related information)

<http://www.tilva.com/ccc.htm>

For application for an exemption, refer to the following CNCA website.

<http://www.cnca.gov.cn/cl.htm>

<http://www.cnca.gov.cn/cx.doc>