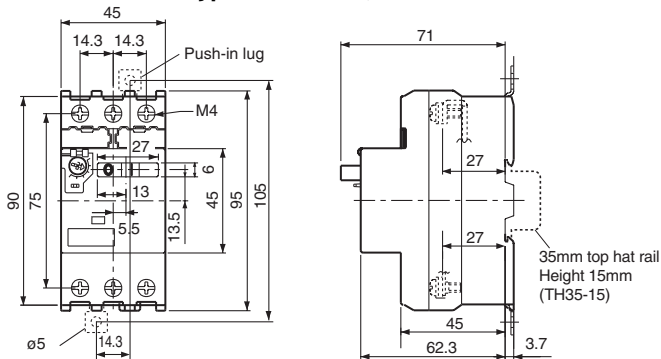
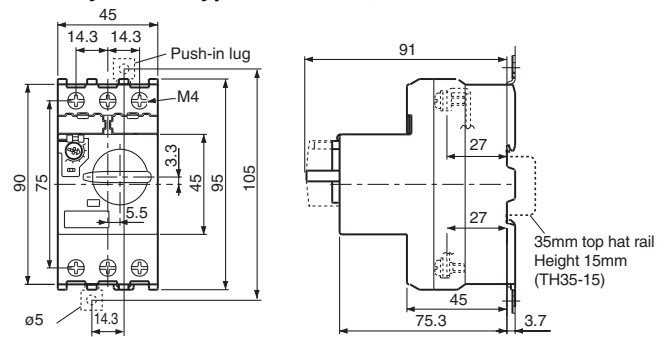


■ Dimensions, mm

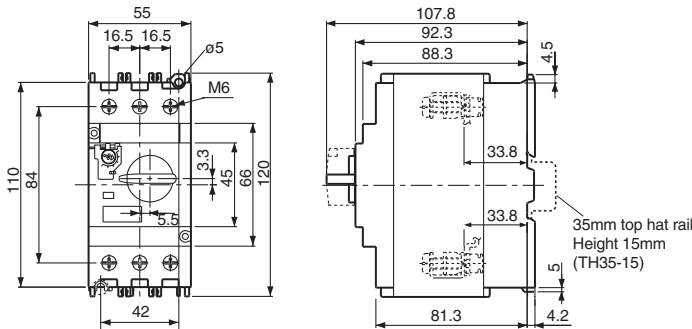
• Rocker handle types **BM3RSB, BM3RSR**



• Rotary handle types **BM3RHB, BM3RHR**

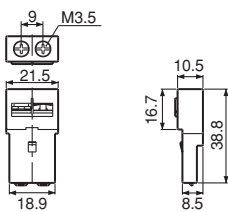


• Rotary handle types **BM3VSB, BM3VHB**

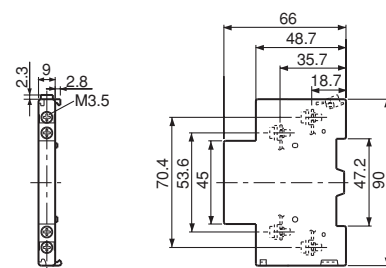


Accessories

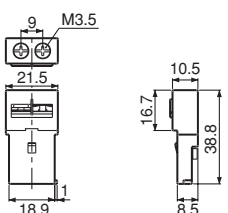
• Auxiliary contact blocks, front mounting
BZ0WI



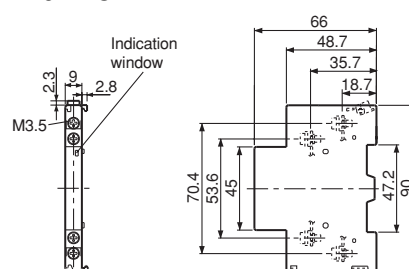
• Auxiliary contact blocks, side mounting
BZ0WU



• Alarm contact blocks, front mounting
BZ0KI



• Auxiliary and alarm contact blocks
BZ0WКУ



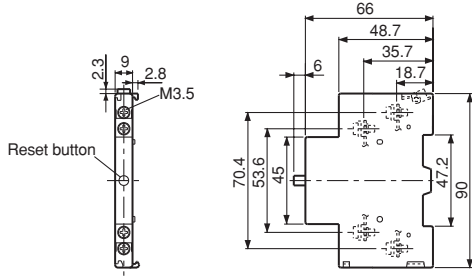
DUO series Manual Motor Starters

Dimensions

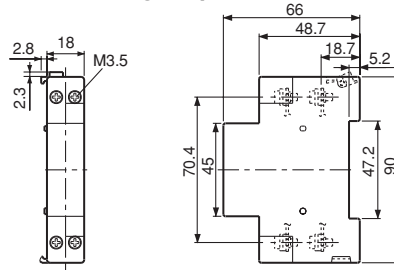
■ Dimensions, mm

Accessories

- Short-circuit alarm contact block BZ0TKUAB

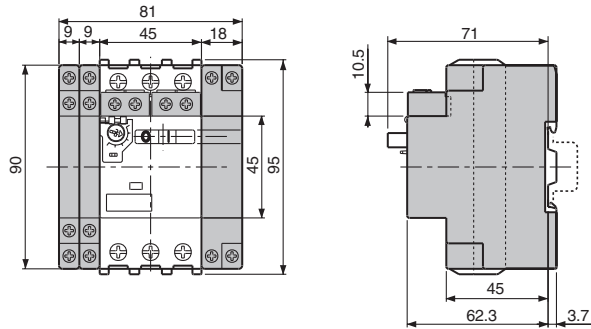


- Shunt trip devices BZ0F
- Undervoltage trip devices BZ0R

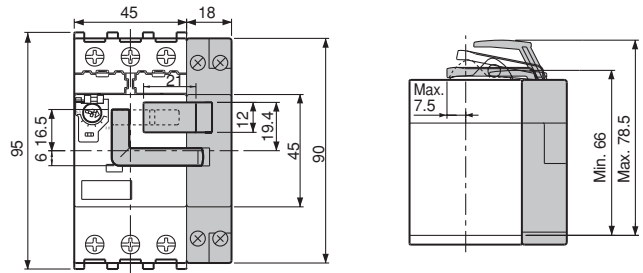


MMS with accessories

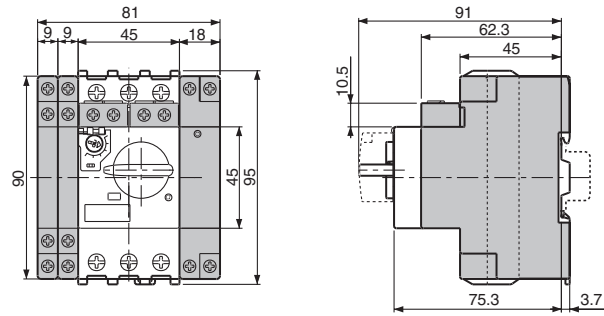
- BM3RSB + BZ0
- BM3RSR + BZ0



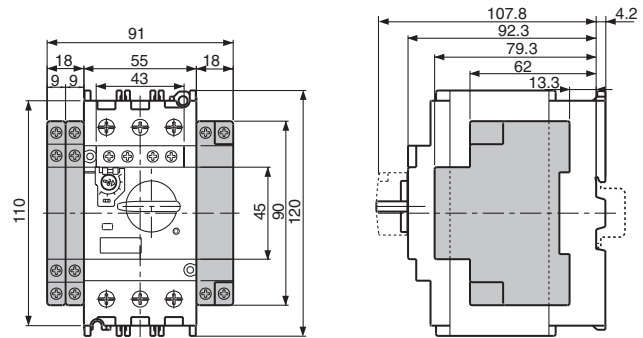
- BM3RSB + BZ0R□LKU (Undervoltage trip device)
- BM3RSR + BZ0R□LKU



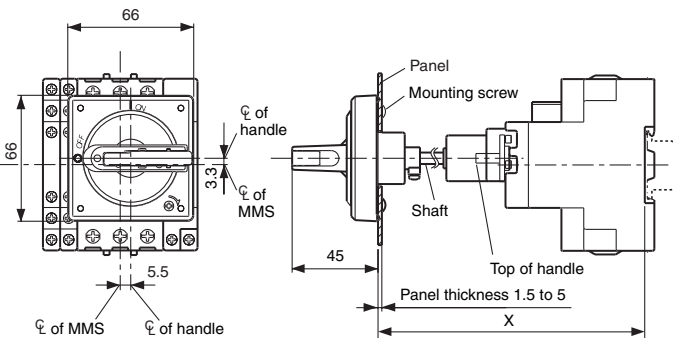
- BM3RHB + BZ0
- BM3RHR + BZ0



- BM3V□B + BZ0

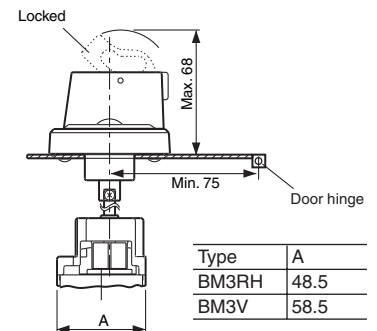
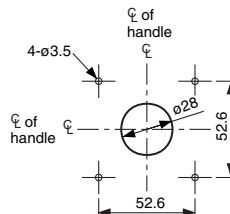


External operation handle BZ0V



Type	X min.	X max.
BZ0VBBL, BZ0VYRL	139±2	289±2
BZ0VBBL, BZ0VYRM	156±2	306±2

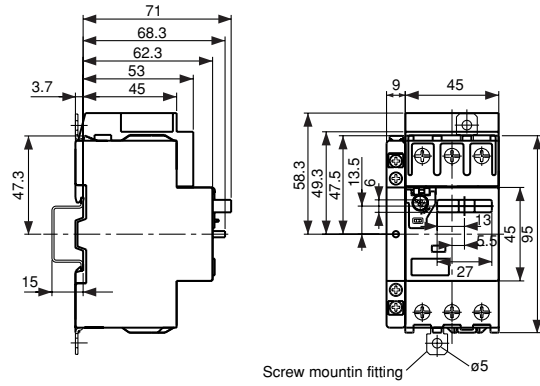
Panel drilling



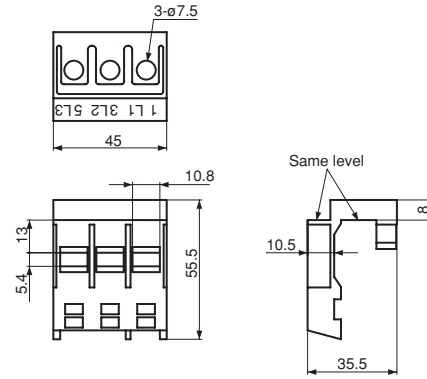
Type	A
BM3RH	48.5
BM3V	58.5

■ Dimensions, mm
• UL508 Type E

MMS + Terminal cover + short-circuit alarm contact block

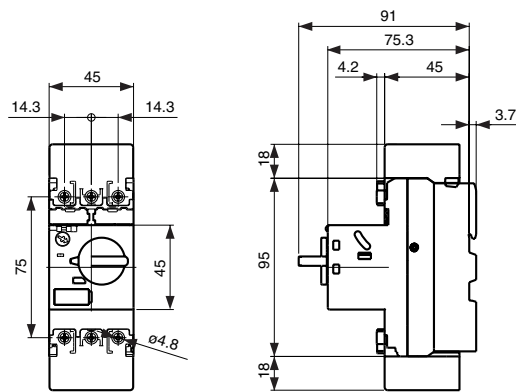


Terminal cover



• MMS with long terminal cover

MMS + long terminal cover



Long terminal cover

