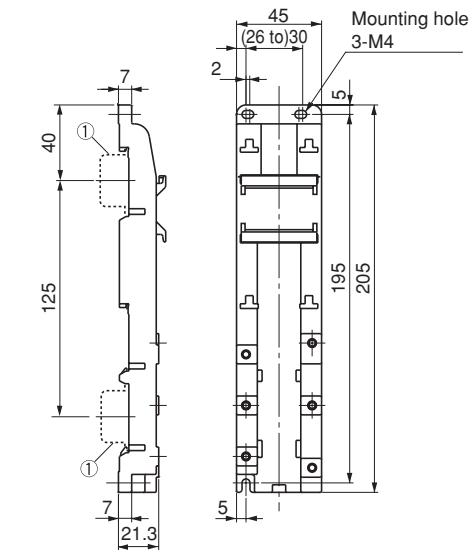


■ Dimensions, mm

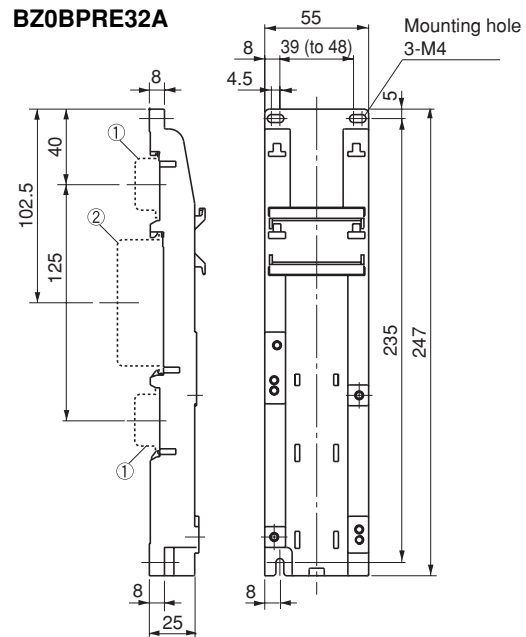
**• Base plates
BZ0BPVE22A**



①35mm wide rail (height 15mm) x 2

Base plate type	Applicable type	
	MMS	Contactors
BZ0BPVE22A	BM3RSB	SC-E02, E03, E04, E05
	BM3RHB	E02/G, E03/G, E04/G, E05/G

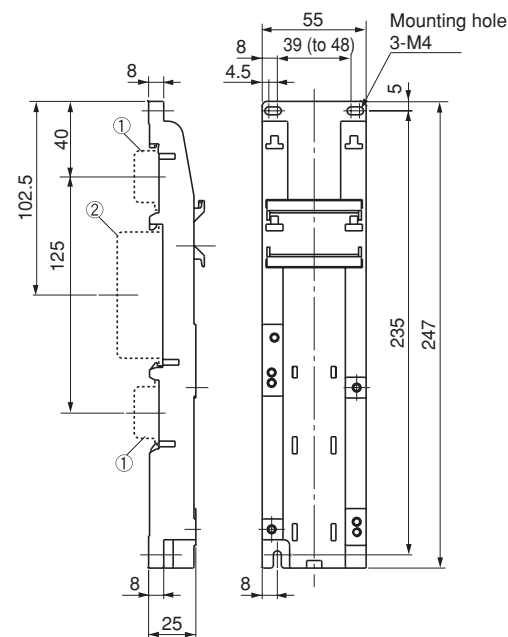
BZ0BPVE32A



①35mm wide rail (height 15mm) x 2
②75mm wide rail (height 25mm) x 1

Base plate type	Applicable type	
	MMS	Contactors
BZ0BPVE32A	BM3RSB	SC-E1, E1/G
	BM3RHB	

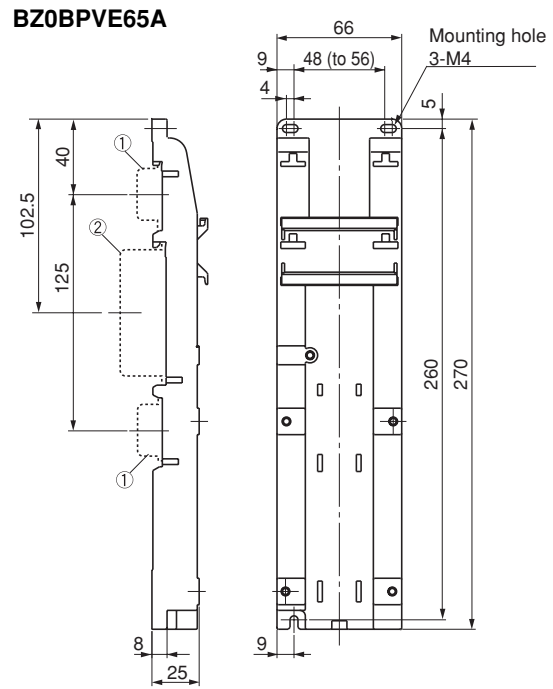
BZ0BPVE51A



①35mm wide rail (height 15mm) x 2
②75mm wide rail (height 25mm) x 1

Base plate type	Applicable type	
	MMS	Contactors
BZ0BPVE51A	BM3VSB	SC-E1, E2, E2S,
	BM3VHB	E1/G, E2/G, E2S/G

BZ0BPVE65A



①35mm wide rail (height 15mm) x 2
②75mm wide rail (height 25mm) x 1

Base plate type	Applicable type	
	MMS	Contactors
BZ0BPVE65A	BM3VSB	SC-E3, E3/G
	BM3VHB	

DUO series Combination Starters

Dimensions

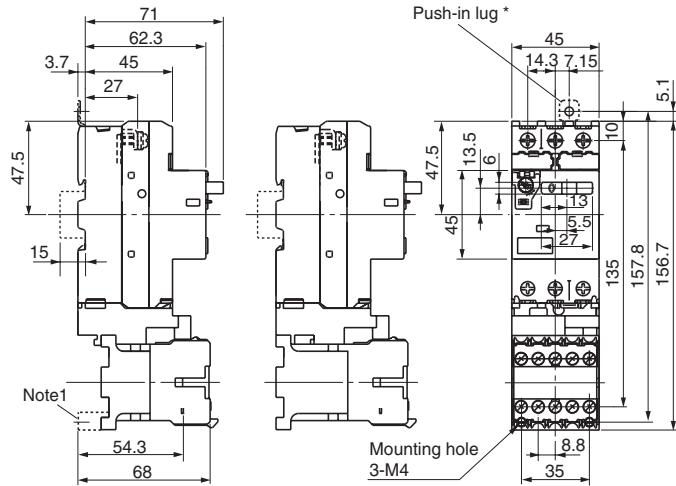
■ Dimensions, mm

• Combination

BM3RS□ + SC-M01, M02

+ SC-M01/G, M01/G1, M01/G2

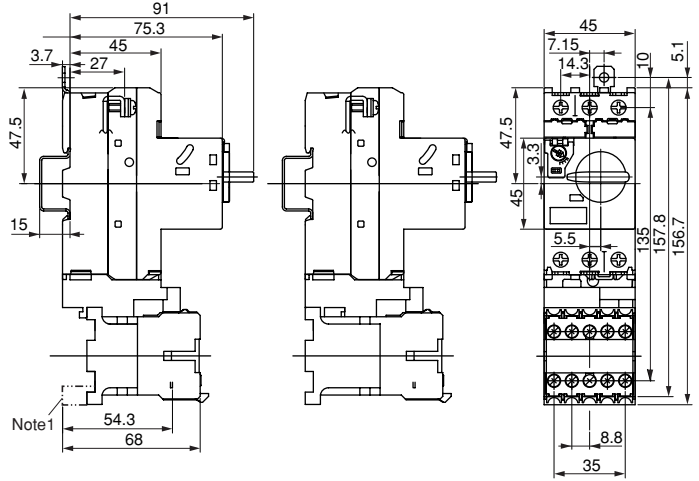
+ SC-M02/G, M02/G1, M02/G2



BM3RH□ + SC-M01, M02

+ SC-M01/G, M01/G1, M01/G2

+ SC-M02/G, M02/G1, M02/G2



①35mm wide rail (height 15mm) x 1

MMS	Contactors	Link module	Mass(g)
BM3RSB	SC-M01, M02	BZ0LRC09AA	540
BM3RSR	SC-M01/G, M01/G1, M01/G2 SC-M02/G, M02/G1, M02/G2	BZ0LRC09AA	600

Note1: * Dimensions for mounting of an optional push-in lug/BZ0SET and 2-spacer supplied with link module/BZ0LRC09AA, when screw-mounting BM3RSB with SC-M01 or SC-M02.

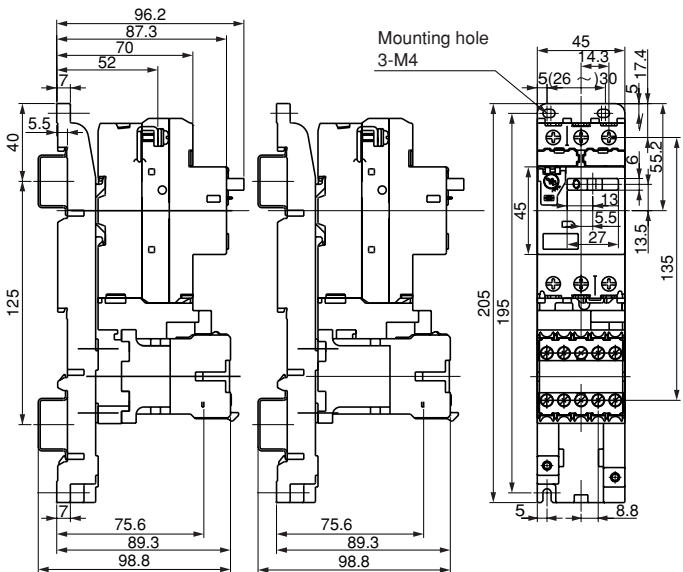
MMS	Contactors	Link module	Mass(g)
BM3RHB	SC-M01, M02	BZ0LRC09AA	560
BM3RHR	SC-M01/G, M01/G1, M01/G2 SC-M02/G, M02/G1, M02/G2	BZ0LRC09AA	620

BM3RS□ + SC-M01, M02

+ SC-M01/G, M01/G1, M01/G2

+ SC-M02/G, M02/G1, M02/G2

+ (Base plate BZ0BP22A)



①35mm wide rail (height 15mm) x 2

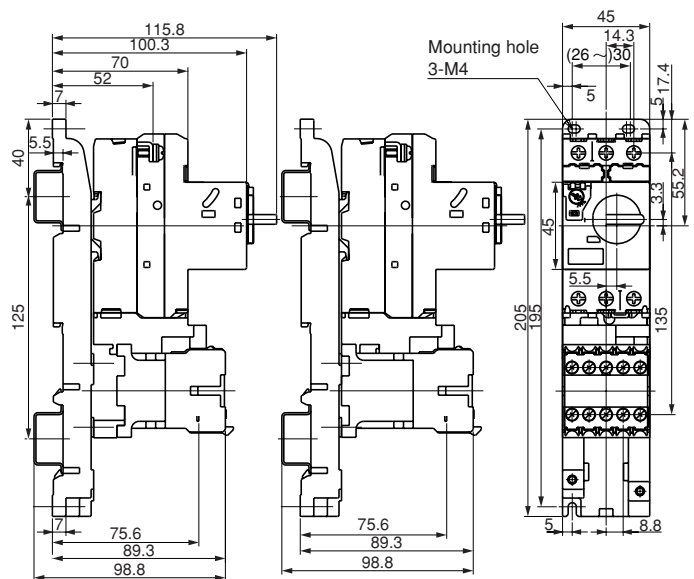
MMS	Contactors	Link module	Base plate	Mass(g)
BM3RSB	SC-M01, M02	BZ0LRC09AA	BZ0BP22A	640
	SC-M01/G, M01/G1, M01/G2 SC-M02/G, M02/G1, M02/G2			700

BM3RH□ + SC-M01, M02

+ SC-M01/G, M01/G1, M01/G2

+ SC-M02/G, M02/G1, M02/G2

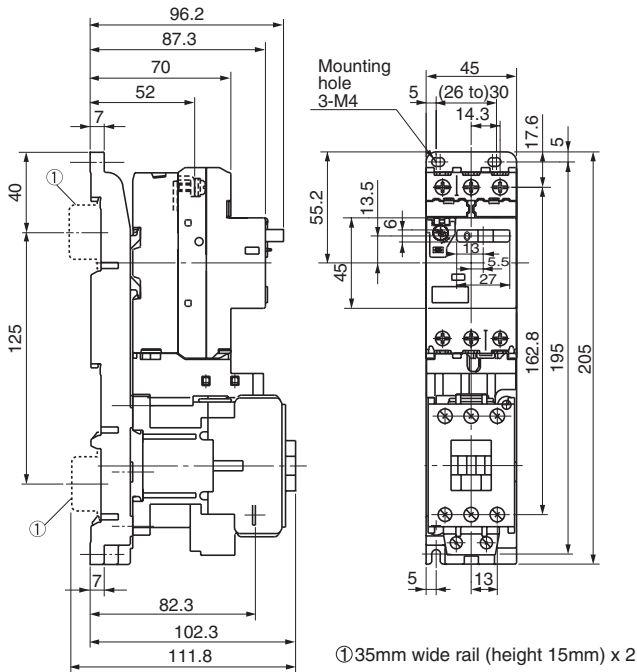
+ (Base plate BZ0BP22A)



①35mm wide rail (height 15mm) x 2

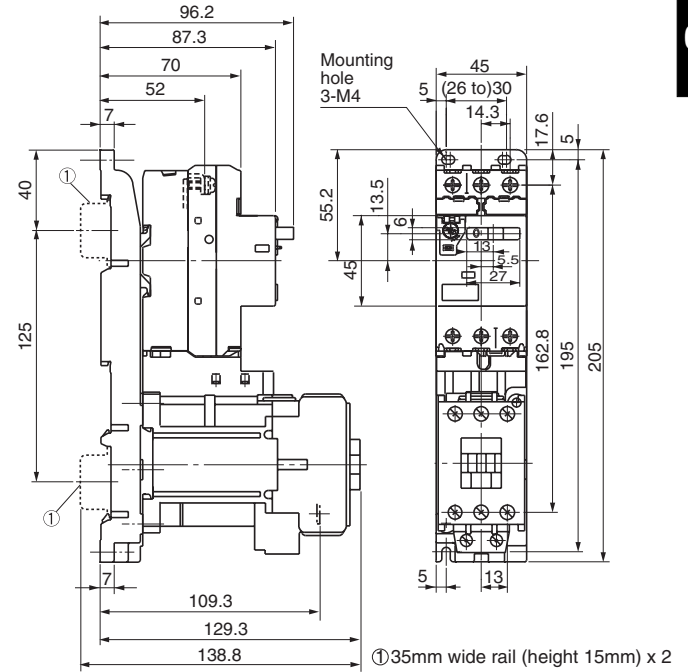
MMS	Contactors	Link module	Base plate	Mass(g)
BM3RHB	SC-M01, M02	BZ0LRC09AA	BZ0BP22A	660
	SC-M01/G, M01/G1, M01/G2 SC-M02/G, M02/G1, M02/G2			720

■ Dimensions, mm
• Combination
BM3RS□ + SC-E02 to E05



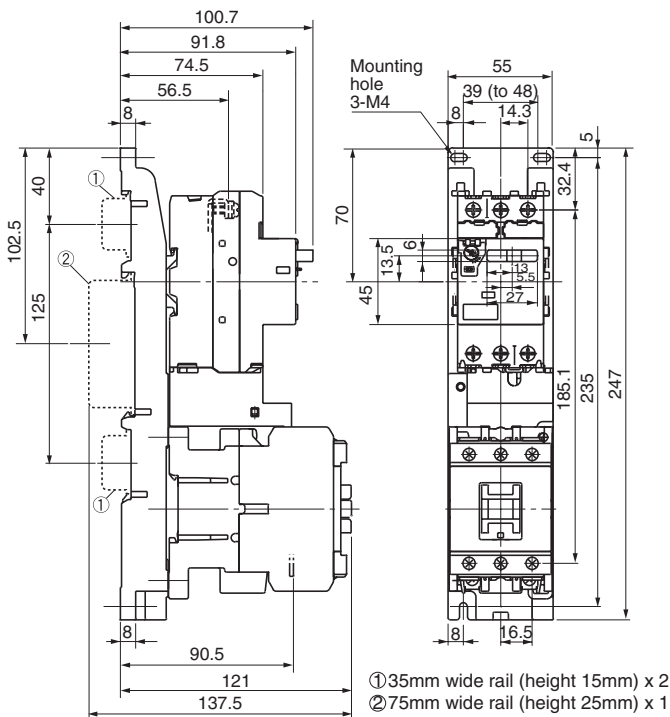
MMS	Contactors	Link module	Base plate	Mass (g)
BM3RSB	SC-E02, E03, E04, E05	BZ0LRE22AA	BZ0BPRE22A	820
BM3RSR				

BM3RS□ + SC-E02/G to E05/G



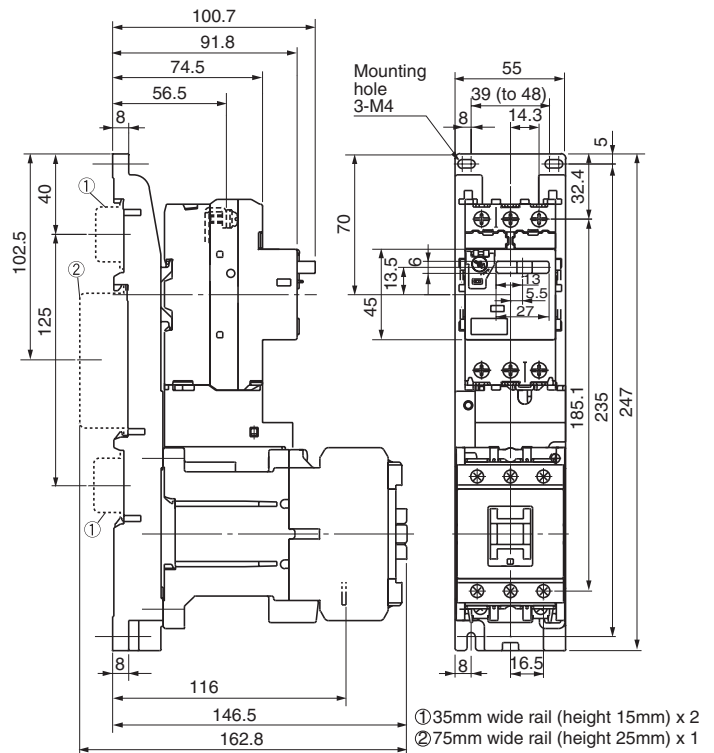
MMS	Contactors	Link module	Base plate	Mass (g)
BM3RSB	SC-E02/G, E03/G, E04/G, E05/G	BZ0LRE22GA	BZ0BPRE22A	1,065
BM3RSR				

BM3RS□ + SC-E1



MMS	Contactors	Link module	Base plate	Mass (g)
BM3RSB	SC-E1	BZ0LRE32AA	BZ0BPRE32A	1,135
BM3RSR				

BM3RS□ + SC-E1/G



MMS	Contactors	Link module	Base plate	Mass (g)
BM3RSB	SC-E1/G	BZ0LRE32GA	BZ0BPRE32A	1,360
BM3RSR				

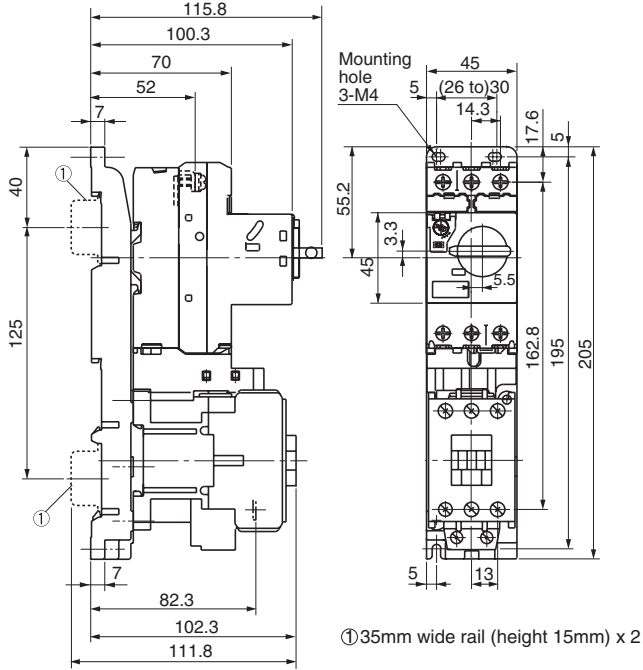
DUO series Combination Starters

Dimensions

■ Dimensions, mm

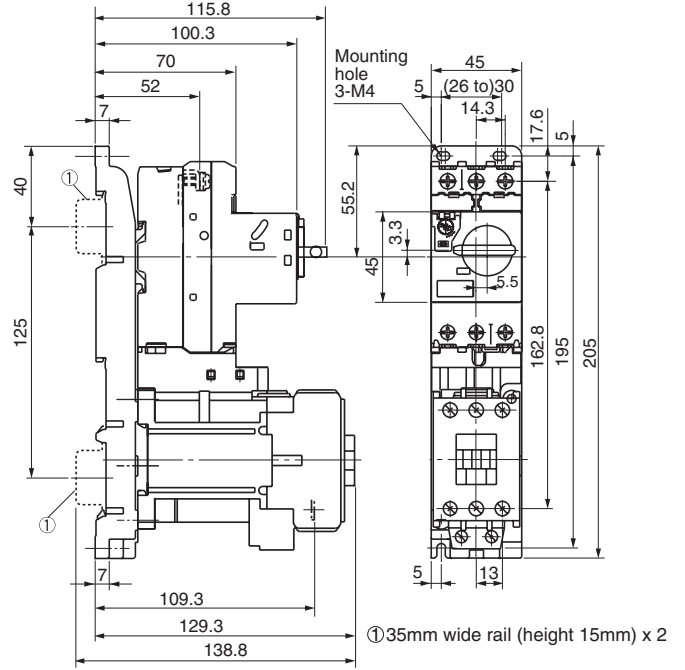
• Combination

BM3RH□ + SC-E02 to E05



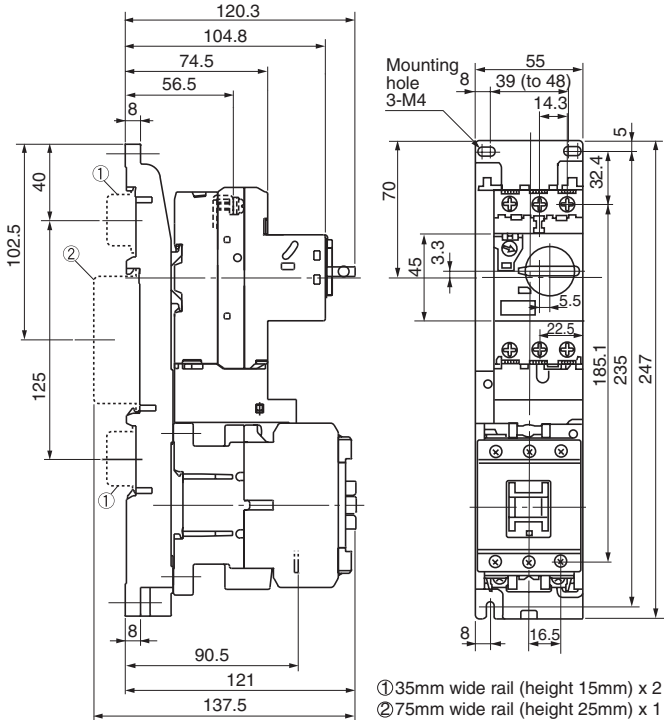
MMS	Contactors	Link module	Base plate	Mass (g)
BM3RHB	SC-E02, E03, E04, E05	BZ0LRE22AA	BZ0BPPE22A	840
BM3RHR				

BM3RH□ + SC-E02/G to E05/G



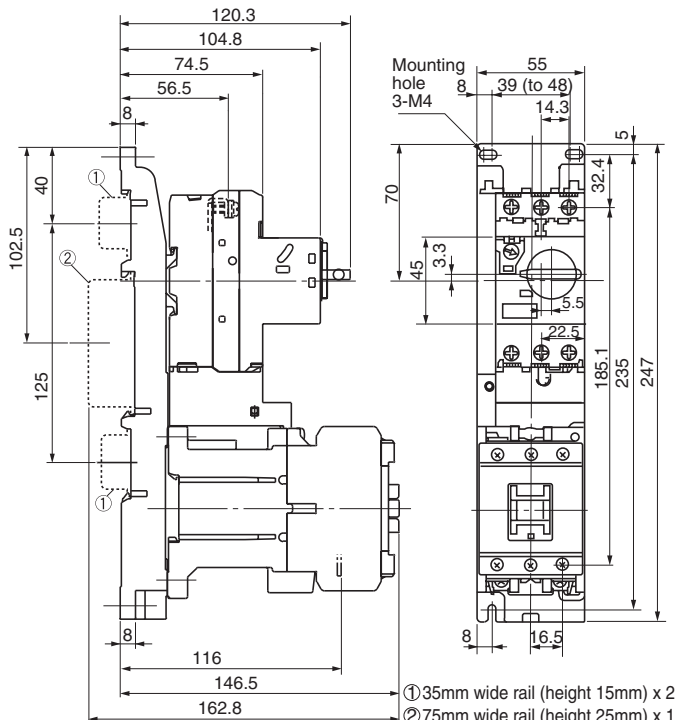
MMS	Contactors	Link module	Base plate	Mass (g)
BM3RHB	SC-E02/G, E03/G, E04/G, E05/G	BZ0LRE22GA	BZ0BPPE22A	1,085
BM3RHR				

BM3RH□ + SC-E1



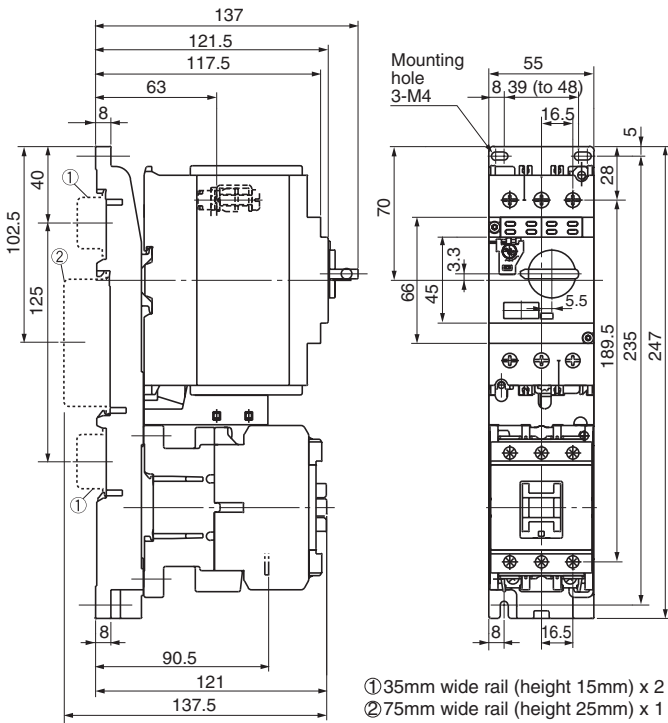
MMS	Contactors	Link module	Base plate	Mass (g)
BM3RHB	SC-E1	BZ0LRE32AA	BZ0BPPE32A	1,155
BM3RHR				

BM3RH□ + SC-E1/G



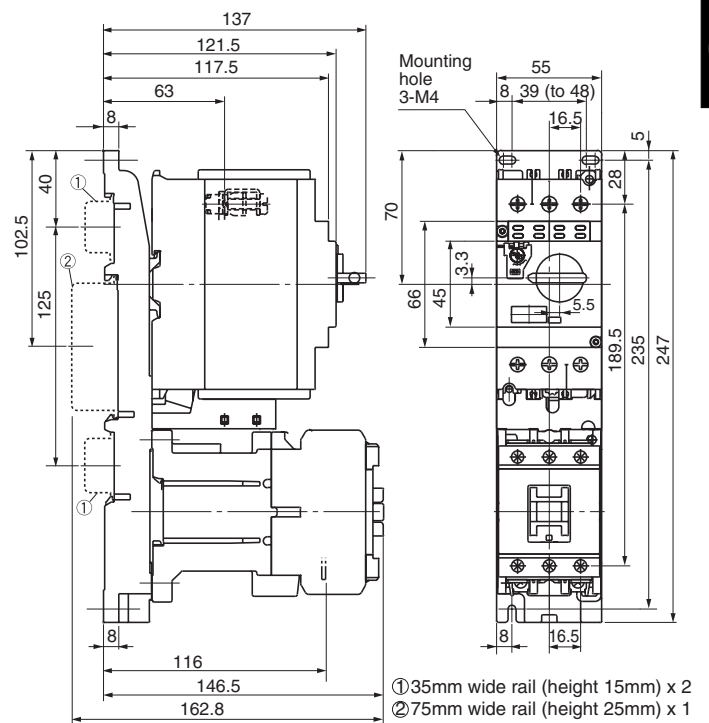
MMS	Contactors	Link module	Base plate	Mass (g)
BM3RHB	SC-E1/G	BZ0LRE32GA	BZ0BPPE32A	1,380
BM3RHR				

■ Dimensions, mm
• Combination
BM3V□B + SC-E1, E2, E3



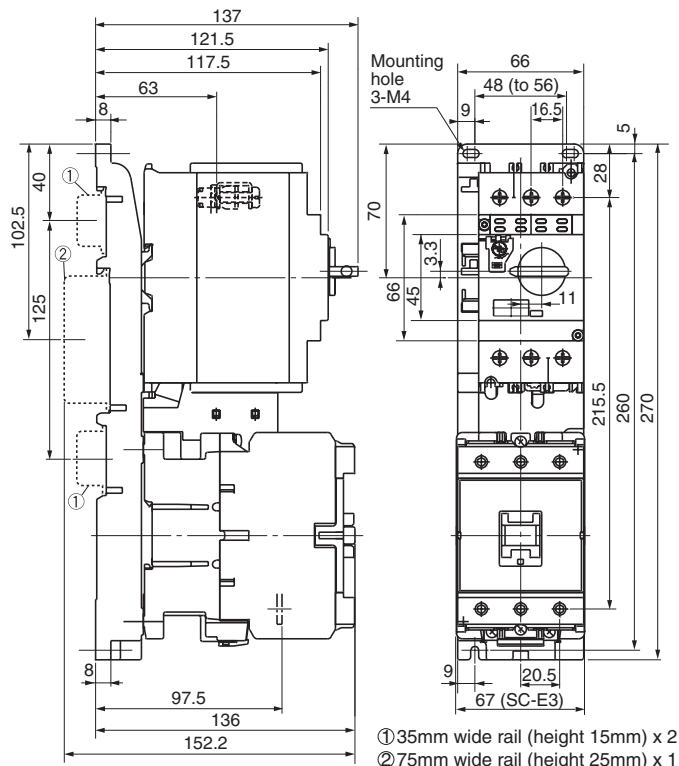
MMS	Contactors	Link module	Base plate	Mass (g)
BM3VSB	SC-E1, E2, E2S	BZ0LVE51AA	BZ0BPVE51A	1,580
BM3VHB				

BM3V□B + SC-E1/G, E2/G, E2S/G



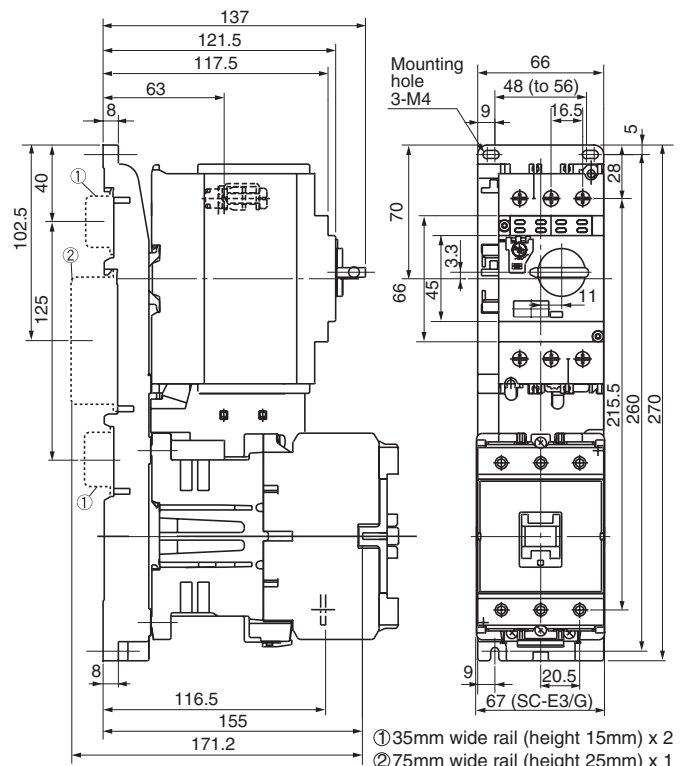
MMS	Contactors	Link module	Base plate	Mass (g)
BM3VSB	SC-E1/G, E2/G, E2S/G	BZ0LVE51GA	BZ0BPVE51A	1,810
BM3VHB				

BM3V□B + SC-E3



MMS	Contactors	Link module	Base plate	Mass (g)
BM3VSB	SC-E3	BZ0LVE65AA	BZ0BPVE65A	2,080
BM3VHB				

BM3V□B + SC-E3/G



MMS	Contactors	Link module	Base plate	Mass (g)
BM3VSB	SC-E3/G	BZ0LVE65GA	BZ0BPVE65A	2,400
BM3VHB				