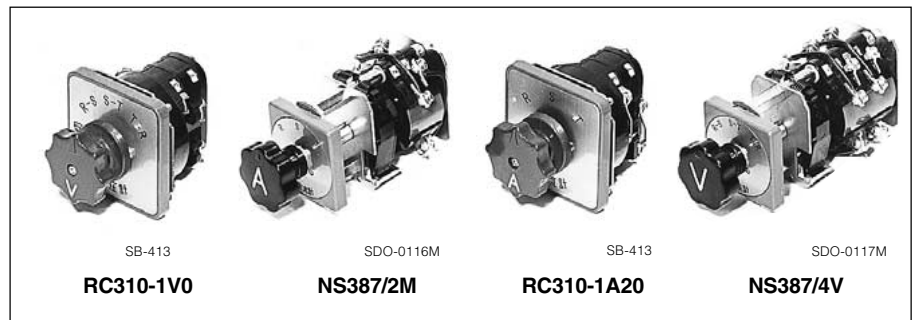


Voltmeter/Ammeter Changeover Switches

Description

These switches are used with voltmeters or ammeters in secondary PT or CT circuits. Normally, 3-phase line voltage or phase current is measured with 3 meters provided, which requires considerable switchboard or console space. Space can be saved by using NS387 and RC310 instrument switches, since the phase current or line voltage can be read with a single meter and either VS or AS (Voltmeter or Ammeter switch). FUJI AS's are precisely and ruggedly constructed, and open circuits do not occur at the time of switch-over, so eliminating the possibility of abnormal voltage trouble. NS387 is a



blade-type switch and RC310 is a cam-type. Both are compact in size and use highly dependable silver contacts. FUJI can also supply DC voltmeter type switches in addition to these for AC use.

Ordering information

Specify the following:
1. Type number

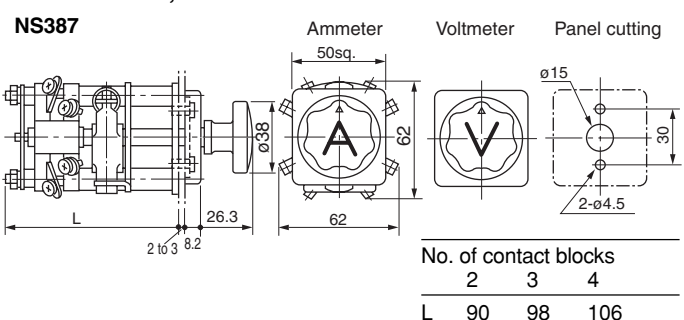
Series	Application	Type	Ordering code	No. of contact block	Legend plate *	Handle angle	With or without Off position	Mass (kg)
NS387	AC Voltmeter	NS387/4V	AC38V4N	4	R · S · S-T · T-R	2 x 45°	Without	0.5
	AC Voltmeter	NS387/4V0	AC38V4F	4	OFF · R · S · S-T · T-R	3 x 45°	With	0.5
	DC Voltmeter	NS387/2V	AC38V2N	2	I · OFF · II	2 x 45°	With	0.43
	AC Ammeter	NS387/2M	AC38A2N	2	R · S · T	2 x 45°	Without	0.43
	AC Ammeter	NS387/2M0	AC38A2F	3	OFF · R · S · T	3 x 45°	With	0.47
	AC Ammeter	NS387/3M	AC38A3N	3	R · S · T	2 x 45°	Without	0.47
	AC Ammeter	NS387/4M	AC38A43F	4	OFF · R · S · T	3 x 45°	With	0.5
RC310	AC Voltmeter	RC310-1V	AK2R1-V32	2	R · S · S-T · T-R	2 x 45°	Without	0.22
	AC Voltmeter	RC310-1V0	AK2R1-V42	2	OFF · R · S · S-T · T-R	3 x 45°	With	0.22
	AC Ammeter	RC310-1A2	AK2R1-A32	2	R · S · T	2 x 45°	Without	0.22
	AC Ammeter	RC310-1A20	AK2R1-A42	2	OFF · R · S · T	3 x 45°	With	0.22
	AC Ammeter	RC310-1A3	AK2R1-A33	3	R · S · T	2 x 45°	Without	0.25
	AC Ammeter	RC310-1A30	AK2R1-A43	3	OFF · R · S · T	3 x 45°	With	0.25

Note: * For standard type legend plate. Other types can be manufactured by request.

Ratings

Series	Rated thermal current (A)	Making and breaking capacity AC (inductive)			DC (inductive)		
		Voltage (V)	Make (A)	Break (A)	Voltage (V)	Make (A)	Break (A)
NS387	15	110	30	3	24	60	60
		220	30	3	110	15	15
		440	20	2	220	5	5
		550	20	2	440	2.5	2.5
RC310	10	110	37.5	7.5	24	37.5	7.5
		220	37.5	7.5	110	37.5	1.3
		440	37.5	2.5	220	37.5	0.45
		550	37.5	1.5	440	37.5	0.15

Dimensions, mm

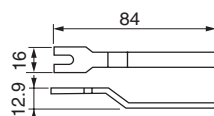


Handle color (standard)

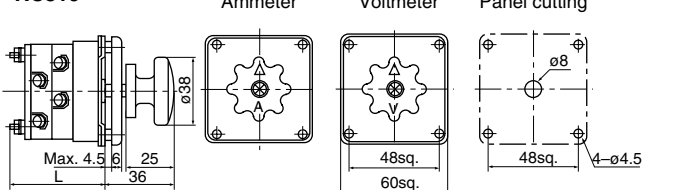
NS387: Black
RC310: Black

Special spanner (for NS387)

Use this spanner for installation or replacement.



RC310



Note: Do not remove the wires connected.

Panel Switches

NS387 and RC310

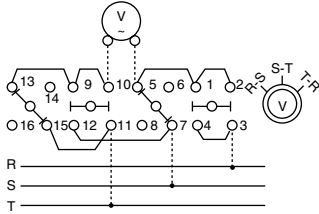
Instrument switches

■ Wiring diagrams

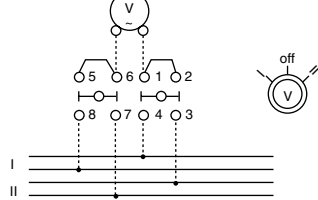
Voltmeter changeover switches

• NS387 series

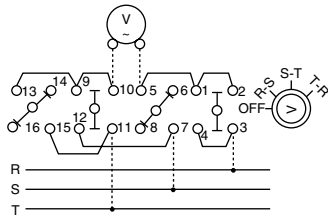
NS387/4V



NS387/2V

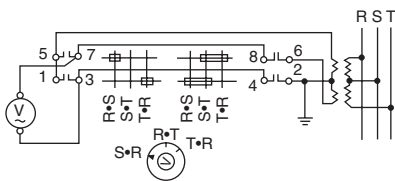


NS387/4V0

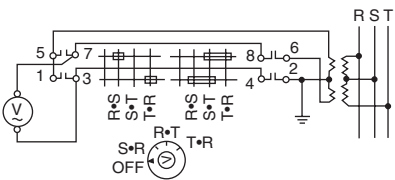


• RC310 series

RC310-1V



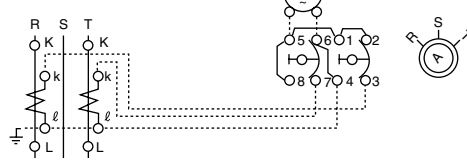
RC310-1V0



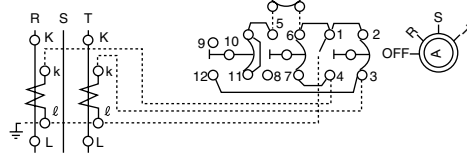
Ammeter changeover switches

• NS387 series

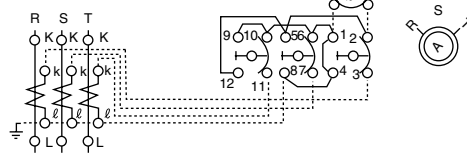
NS387/2M



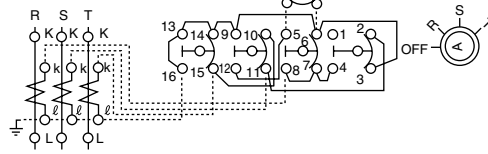
NS387/2M0



NS387/3M

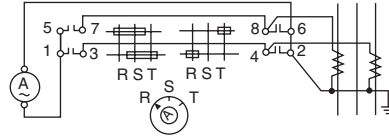


NS387/4M

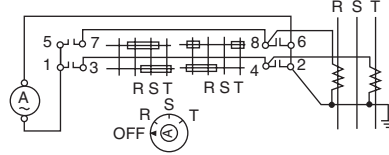


• RC310 series

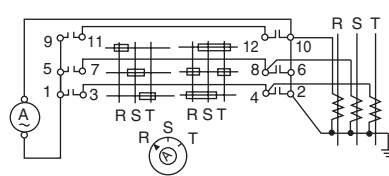
RC310-1A2



RC310-1A20



RC310-1A3



RC310-1A30

