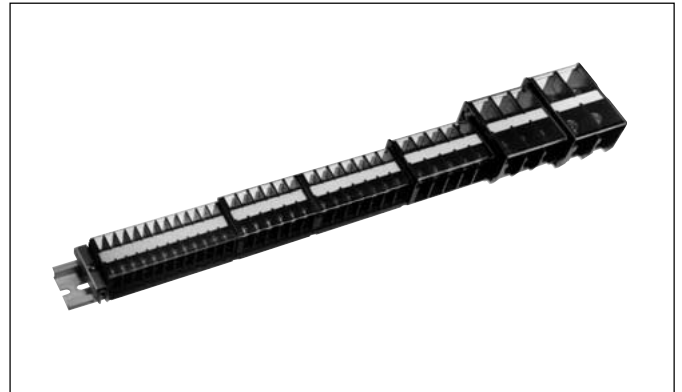


■ Features

- Any number of poles can be assembled on a 35mm DIN rail.
- A lineup of 10 models supporting screw sizes from M3.5 to M16 and a maximum current of 600A is available.
- Our standard models are approved by UL, CSA, and TÜV.
- The molded material conforms to the UL standard for self-extinguishing materials (UL94V-0).
- Mounting is performed by simply pressing the block down onto the rail (except for models LT2E-200 to 600).



■ Specifications

Rated thermal current (A)	Terminal screw	Applicable wire size and maximum current	Terminal block	End barrier	Cover	Legend plate	End clamp	Rail
22	M3.5	1.25mm <sup>2</sup> -16A 2mm <sup>2</sup> -22A	<b>LT2E-020</b>	LT9E-E1	LT9E-C1	LT9E-M1	LT9E-T1	LT9E-R1 LT9E-R2
30	M4	1.25mm <sup>2</sup> -16A 2mm <sup>2</sup> -22A 3.5mm <sup>2</sup> -30A	<b>LT2E-030</b>	LT9E-E2	LT9E -C2			
40	M4	3.5mm <sup>2</sup> -30A 5.5mm <sup>2</sup> -40A	<b>LT2E-040</b>	LT9E-E3				
75	M5	5.5mm <sup>2</sup> -40A 8mm <sup>2</sup> -50A 14mm <sup>2</sup> -75A	<b>LT2E-080</b>	LT9E-E4	LT9E-C3			
95	M6	8mm <sup>2</sup> -50A 14mm <sup>2</sup> -75A 22mm <sup>2</sup> -95A	<b>LT2E-090</b>	LT9E-E5	LT9E-C4			
160	M8	22mm <sup>2</sup> -95A 38mm <sup>2</sup> -130A 60mm <sup>2</sup> -160A	<b>LT2E-150</b>	LT9E-E6	LT9E-C5			
200	M10	38mm <sup>2</sup> -130A 60mm <sup>2</sup> -160A 100mm <sup>2</sup> -200A	<b>LT2E-200</b>	LT9E-E7	LT9E-C6 (Standard provided) LT9E-C7	LT9E-M3 (Standard provided)	LT9E-T2	
300	M10	60mm <sup>2</sup> -160A 100mm <sup>2</sup> -240A 150mm <sup>2</sup> -300A	<b>LT2E-300</b>	LT9E-E7	LT9E-C8 (Standard provided) LT9E-C9			
400	M12	100mm <sup>2</sup> -240A 150mm <sup>2</sup> -310A 200mm <sup>2</sup> -400A	<b>LT2E-400</b>	LT9E-E7	LT9E-C10 (Standard provided) LT9E-C11			
600	M16	150mm <sup>2</sup> -310A 200mm <sup>2</sup> -400A 275mm <sup>2</sup> -600A	<b>LT2E-600</b>	LT9E-E7	LT9E-C12 (Standard provided) LT9E-C13			

# Terminal Blocks Type LT2E

## ■ Performance

Rated insulation voltage	600V
Ambient operating conditions	Temperature -25 to 60°C (with no icing or condensation) Relative humidity 45% to 85%
Temperature rise	Temperature rise in conducting metal is less than 35°C.
Insulation resistance	200MΩ between charged parts, and between charged parts and the metal mounting plate (Measured at 500V DC megger.)
Dielectric strength	2,500V AC (1 min)
Applicable standards	Conforms to JIS C 2811

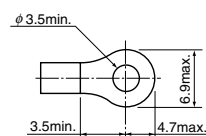
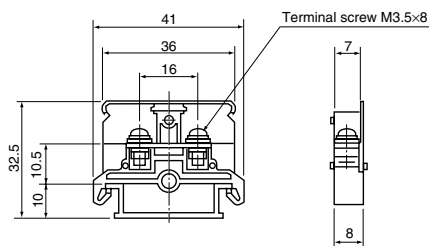
## ■ Material

Main body	PPO (modified polyphenylene oxide resin) (black) UL94V-0
Conductive plate	C2680R (Ni-plated)
Terminal screws	SWRM (Zn-plated)
Side panel	PPO (modified polyphenylene oxide resin) (black) UL94V-0
Cover	PC (translucent polycarbonate resin) UL94V-0
Legend plate	PVC (white)

## ■ Dimensions, mm

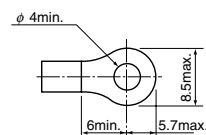
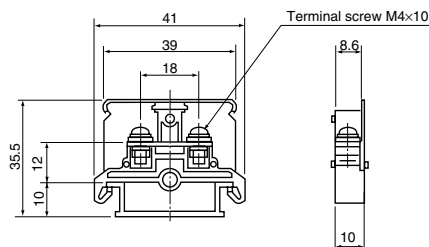
### ● Terminal blocks

LT2E-020



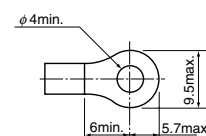
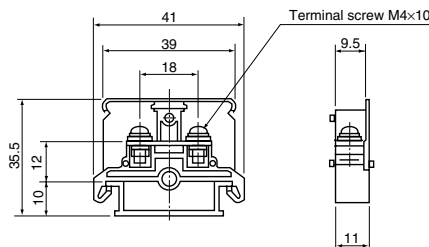
Applicable crimp terminal

LT2E-030



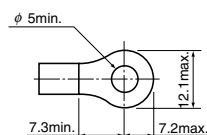
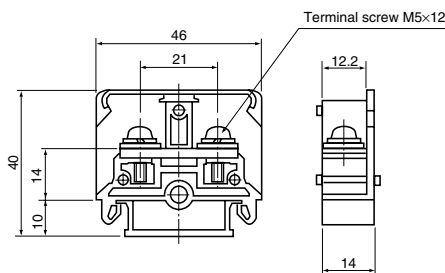
Applicable crimp terminal

LT2E-040



Applicable crimp terminal

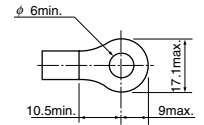
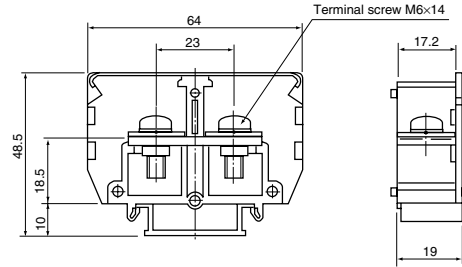
LT2E-080



Applicable crimp terminal

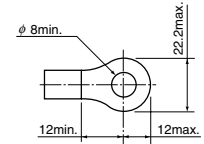
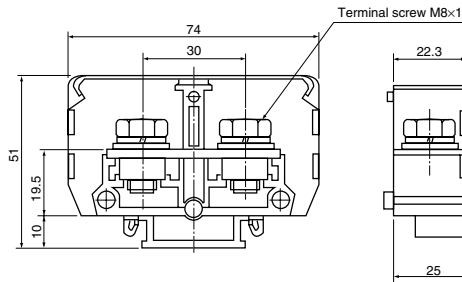
## ● Terminal blocks

LT2E-090



Applicable crimp terminal

LT2E-150

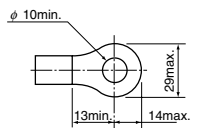
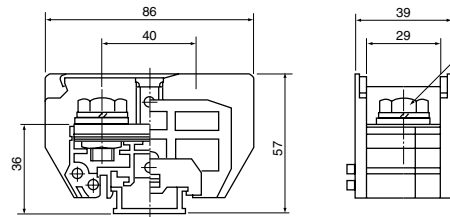


Applicable crimp terminal

LT2E-200



(Cover, supplied with a legend plate)

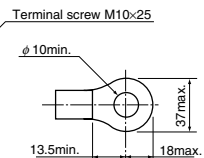
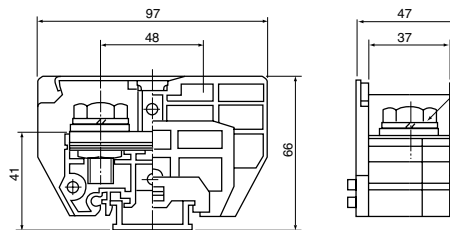


Applicable crimp terminal

LT2E-300



(Cover, supplied with a legend plate)

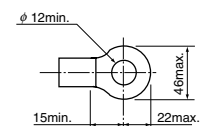
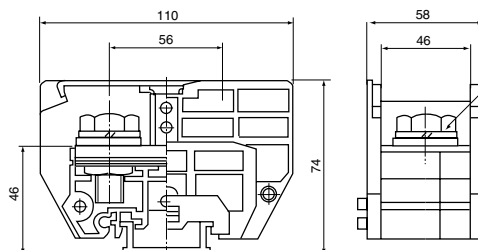


Applicable crimp terminal

LT2E-400



(Cover, supplied with a legend plate)

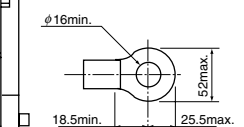
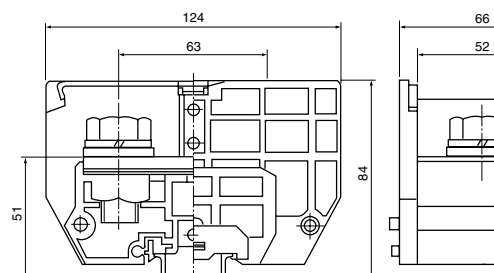


Applicable crimp terminal

LT2E-600



(Cover, supplied with a legend plate)

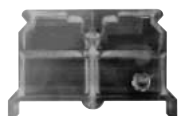


Applicable crimp terminal

# Terminal Blocks Type LT2E

## ● End barriers

LT9E-E1



Sold in units of 100.

LT9E-E2



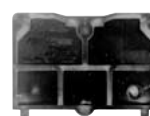
Sold in units of 100.

LT9E-E3



Sold in units of 100.

LT9E-E4



Sold in units of 50.

LT9E-E5



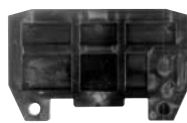
Sold in units of 20.

LT9E-E6



Sold in units of 10.

LT9E-E7



Sold in units of 1.

## ● Covers

LT9E-C1



Length: 1m  
Sold in units of 20.

LT9E-C2



Length: 1m  
Sold in units of 20.

LT9E-C3



Length: 1m  
Sold in units of 20.

LT9E-C4



Length: 1m  
Sold in units of 20.

LT9E-C5



Length: 1m  
Sold in units of 20.

LT9E-C6

Standard cover  
(Standard provided)



Sold in units of 1.

LT9E-C7

Special cover



Sold in units of 1.

LT9E-C8

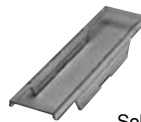
Standard cover  
(Standard provided)



Sold in units of 1.

LT9E-C9

Special cover



Sold in units of 1.

LT9E-C10

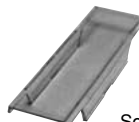
Standard cover  
(Standard provided)



Sold in units of 1.

LT9E-C11

Special cover



Sold in units of 1.

LT9E-C12

Standard cover  
(Standard provided)



Sold in units of 1.

LT9E-C13

Special cover



Sold in units of 1.

## ● Legend plates

LT9E-M1

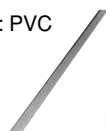
Material: PVC



Dimensions  
(0.5t×10W×1200L)  
Sold in units of 50

LT9E-M3

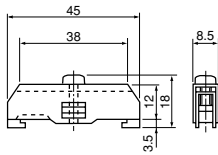
Material: PVC



Dimensions  
(0.5t×12W×900L)  
Sold in units of 50

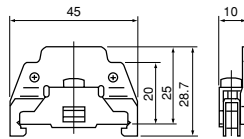
● End clamps

LT9E-T1



Sold in units of 100.

LT9E-T2



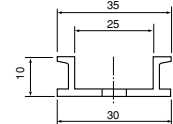
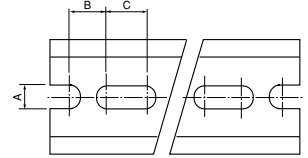
Sold in units of 50.

● Mounting rails

LT9E-R1  
LT9E-R2



Material: aluminum A6063



Type	A	B	C	Length	Sold in units
LT9E-R1	4.5	10	10	1000mm	100
LT9E-R2				2000mm	50

■ Application to products satisfying international standards

Dielectric strength: 2,200V AC for 1 min.  
Operating temperature range: -25 to 60°C

Type	Standard	Rated insulation voltage (V)	Rated continuous current (A)	Applicable wire size for stranded wires (AWG)	International standards
LT2E-020	UL E45457	600	20	20-14	UL approved CSA approved TÜV approved
	CSA 109308-M-001		20	20-14	
	TÜV R9551146		22	20-14	
LT2E-030	UL E45457	600	30	18-12	
	CSA 109308-M-001		30	18-12	
	TÜV R9551147		30	18-12	
LT2E-040	UL E45457	600	40	18-10	
	CSA 109308-M-001		40	18-10	
	TÜV R9551148		40	18-10	
LT2E-080	UL E45457	600	75	10-6	
	CSA 109308-M-001		75	10-6	
	TÜV J9551159		75	12-6	
LT2E-090	UL E45457	600	95	8-4	
	CSA 109308-M-001		95	8-4	
	TÜV J9551160		95	10-4	
LT2E-150	UL E45457	600	150	4-2/0	
	CSA 109308-M-001		150	4-2/0	
	TÜV J9551161		160	6-2/0	
LT2E-200	UL E45457	600	200	2-4/0	
	CSA 109308-M-001		200	2-4/0	
	TÜV J9551162		660	2-250	
LT2E-300	UL E45457	600	300	2/0-300	
	CSA 109308-M-001		300	2/0-300	
	TÜV J9551163		660	1/0-300	
LT2E-400	UL E45457	600	400	4/0-350	
	CSA 109308-M-001		400	4/0-350	
	TÜV J9551164		660	3/0-500	
LT2E-600	UL E45457	600	550	300-600	
	CSA 109308-M-001		550	300-600	
	TÜV J9551165		660	250-600	

Note: The values in the above table are for when standard wires and crimp terminals are used for connection. Use the terminal block together with the crimp terminals and wires approved for the desired standard.