

August 2008

Fuji Electric Systems Co., Ltd.

Controller Div. Automation & Solution Business Headquarters

@E.Integrator Market Release of Fuji Integrated Support Tools

We would like to thank you for your continued patronage of Fuji Programmable Controllers.

Please be informed that Fuji Electric FA has released the @E.Integrator Fuji Integrated Support Tools.

1. Model Released

Product name	Model (Product code)	General specifications
Fuji Integrated Support Tool	NP4N-ITGR	@E.Integrator Fuji Integrated Support Tools Supports the SPH, V8, ALPHA5, and VG7.

2. Start of Sales

July 2008

3. Product Outline

3-1 Features

(1) A new type of engineering environment

- The @E.Integrator can be used for a wide range of Fuji's system devices, including the MICREX-SX PLC, MONITOUCH V8 Programmable Operation Interface, FALDIC-ALPHA5 Servo System, and FRENIC5000VG7S Inverter.
- You can use the @E.Integrator to do everything from creating the system configuration diagram and defining the system configuration, to performing operation, monitoring, and troubleshooting the system devices.

(2) Easier operation

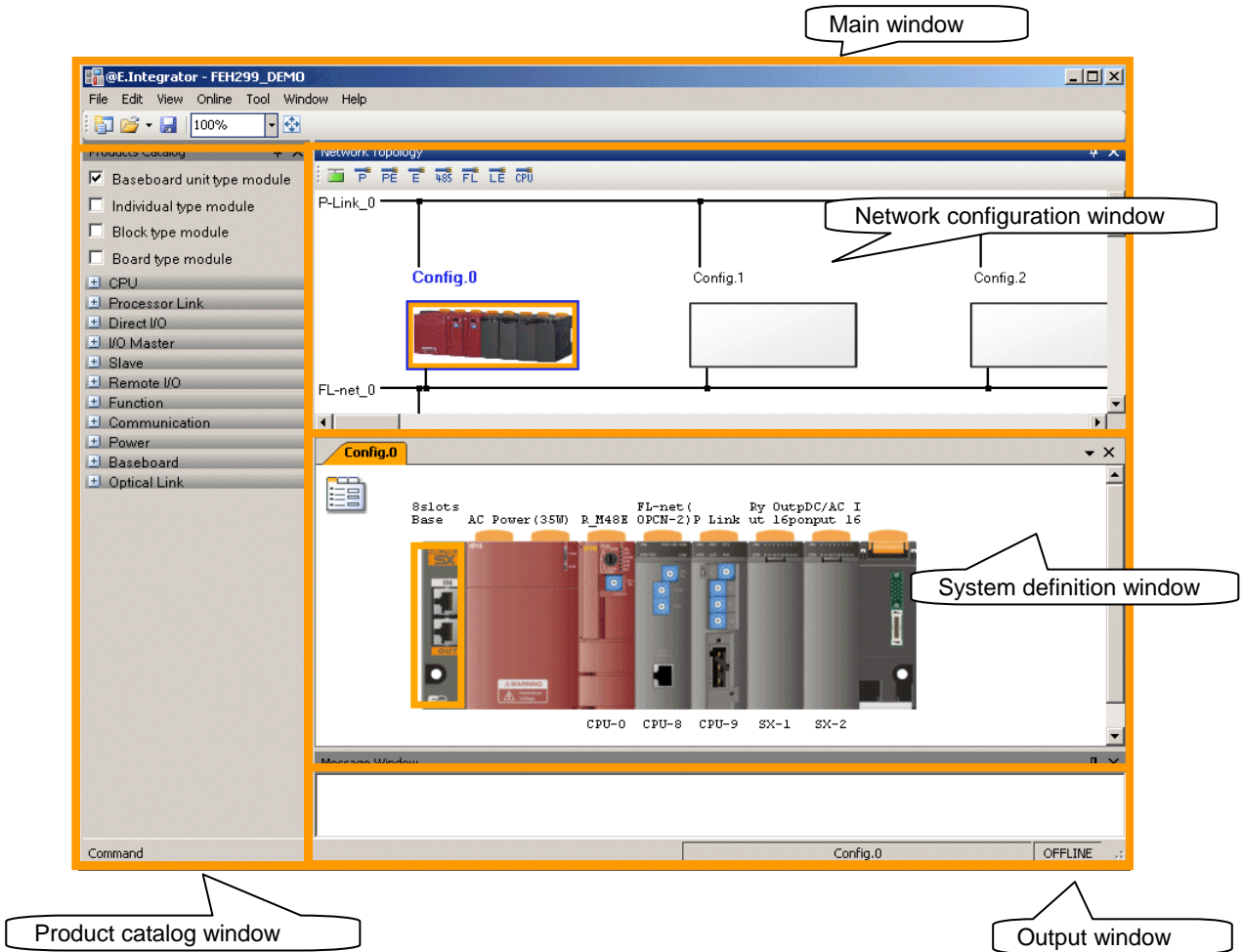
- Conventional support tools allow the operation of equipment directly connected to the Loader. The @E.Integrator connects to each device from a single point, thereby eliminating the need to change Loader cable connections.
- Transparent network connections are possible. You do not need to be conscious of network types or levels. Simply specify the device to be operated.
- The corresponding tool can be started by specifying the device to be manipulated.
- System configuration diagrams are completed by defining the system configuration. The defined configuration diagrams can be visualized for online display and operation screens.

(3) Better efficiency of management and development work

- You can perform integrated management of the relation between contents and tools that were managed for each machine or system in the past.
- The engineering efficiency has been improved for all the processes of development, design, production, testing, onsite startup, operation, and maintenance, while sharing information between processes.

3-2 Screen Configuration

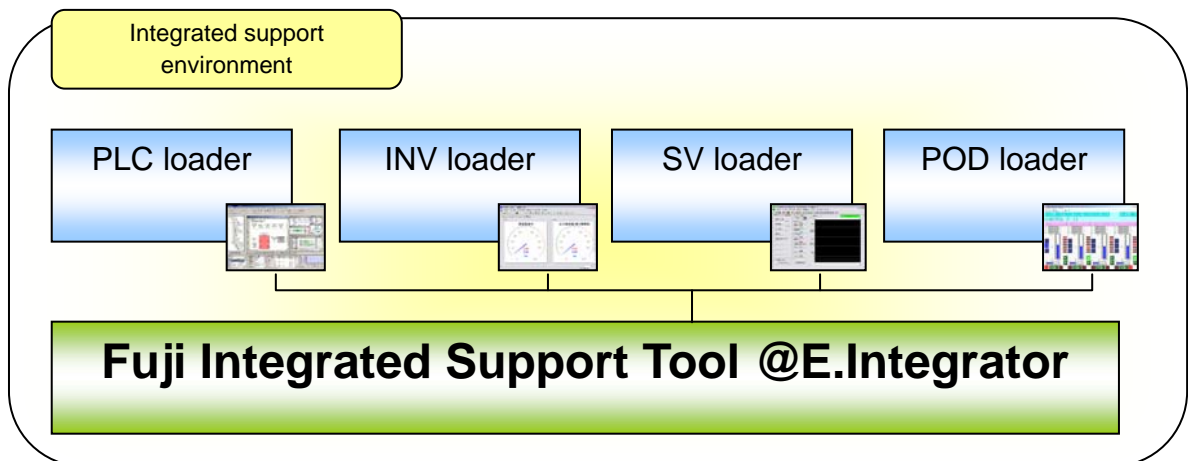
The @E.Integrator has docking windows. Many windows (e.g., a network configuration window, product catalog window, system definition window, and output window) are displayed inside the main window.



3-3 Product Configuration

The @E.Integrator does not include the individual support tools.

Purchase each support tool or download the necessary support tools from our website.



3-4 Supported Devices

Supported tool	Function	Model	Version (or higher)
Fuji Integrated Support Tools @E.Integrator	A tool used for the integrated management of PLC, POD, INV, and SV support tools.	NP4N-ITGR	V1.0.0.0
PLC loader SX-Programmer Expert Standard	A PLC support tool used to edit MICREX-SX programs and monitor status.	NP4H-SEDBV3 NP4H-SWN	V3.4.4.0 V2.3.5.1
POD editor	A POD support tool used to edit the screens and operation of the POD.	V-SFT-5	V5.2.0.0
Inverter loader PC Loader for FRENIC5000VG7	A support tool used to set parameters and monitor status for VG7 vector inverters.	WPS-VG7-PCL	V2.1.0.1
Servo loader PC Loader for ALPHA5	A support tool used to set parameter and monitor status for the ALPHA5.	---	V1.8

System configuration device	Series	Model	Version (or higher)
PLCs MICREX-SX SPH	SPH300 CPU modules SPH2000 CPU modules	NP1PS-□□ NP1PM-□□	V2**68 V**08
PODs	MONITOUCH V8	V8□□□	(no restrictions)
Vector control inverters	FRENIC5000VG7S	FRN□□VG7S-□S X	E021
FALDIC-ALPHA5 servo systems	VS-type servo amplifiers LS-type servo amplifiers	RYT□□5-VS2 RYT□□5-LS2	V1.6 V1.6

3-5 System Requirements

(1) System requirements for @E.Integrator

Item	Requirement
Operating system (*1)	Windows 2000 Professional or Windows XP
Language	Japanese or English
Processor	Pentium 800MHz or faster
Hard disk	30MB
Memory	256MB
Display	SVGA
Disk drive	CD-ROM drive (used for installation)
Communications interfaces	RS-232C, USB, and Ethernet
Software (*1)	Microsoft Internet Explorer version 5.01 or higher Microsoft .NET Framework 2.0 Microsoft .NET Framework 2.0 Japanese language pack (*2)

*1. Use the latest service pack for the operating system.

*2. If the Japanese language pack is not installed while the Japanese OS is running, some messages may be displayed in English.

(2) System requirements for @E.Integrator when used with other support tools

Item	Requirement
Operating system (*1)	Windows 2000 Professional (service pack 4 or higher) Windows XP (service pack 1 or higher)
Processor	Pentium III at 1GHz or faster
Hard disk	Free space of 1.5GB min.
Memory	1GB
Display	XGA or better is recommended.