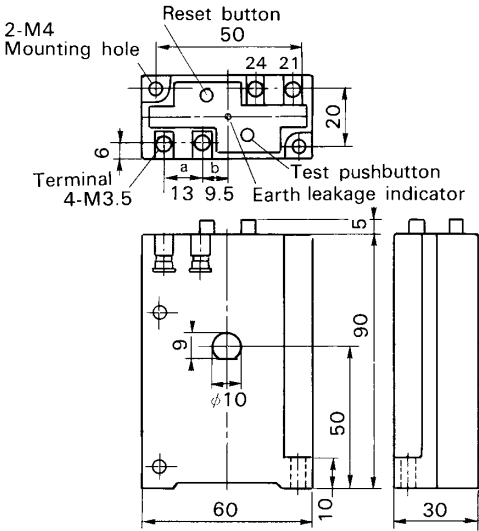
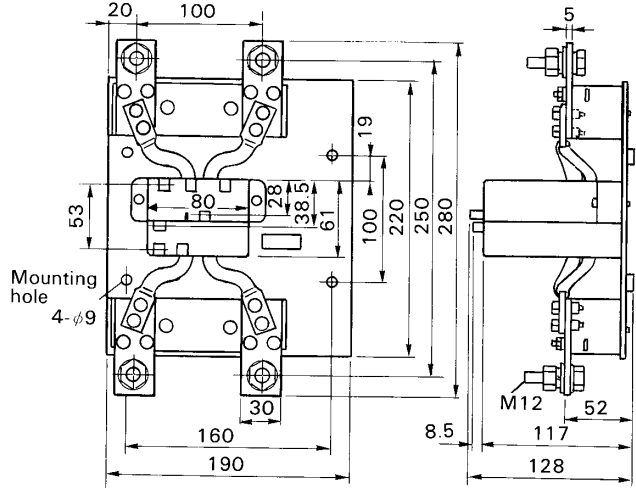


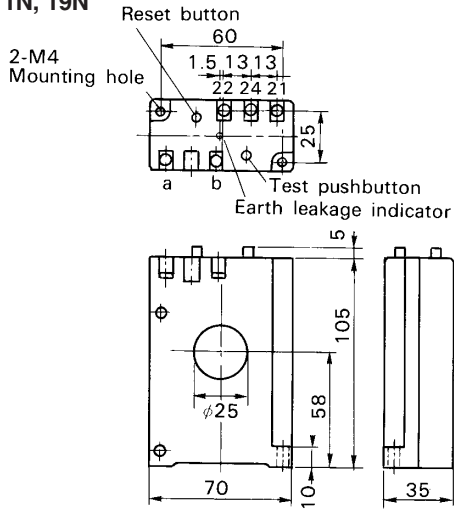
**■ Dimensions, mm**  
**BRR01N, 09N**



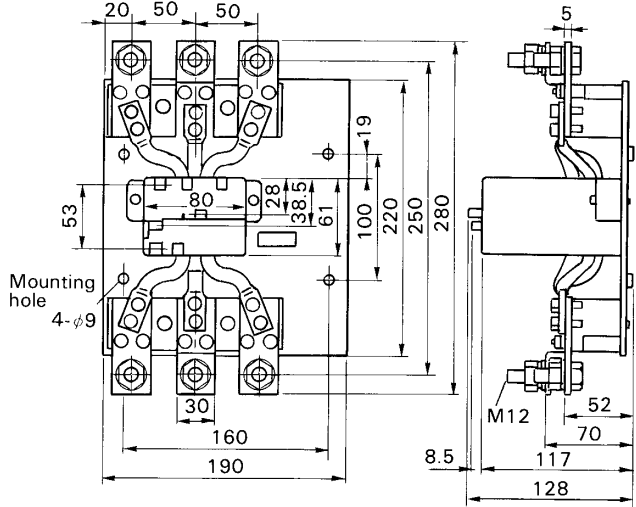
**BRR42H, 45H**  
**2-pole**



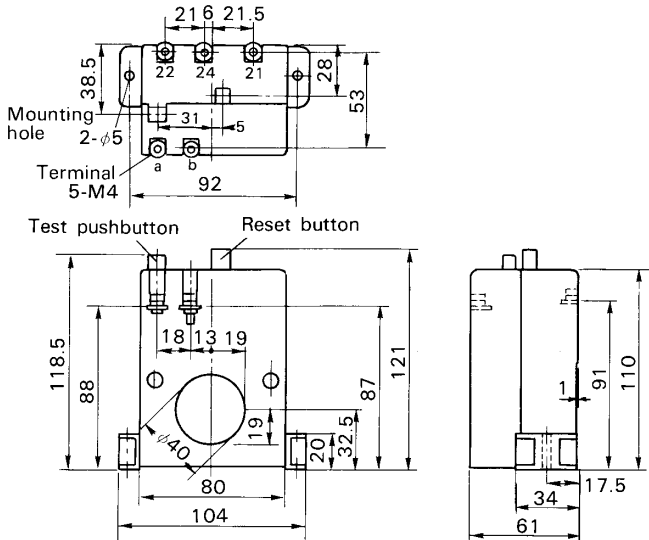
**BRR11N, 19N**



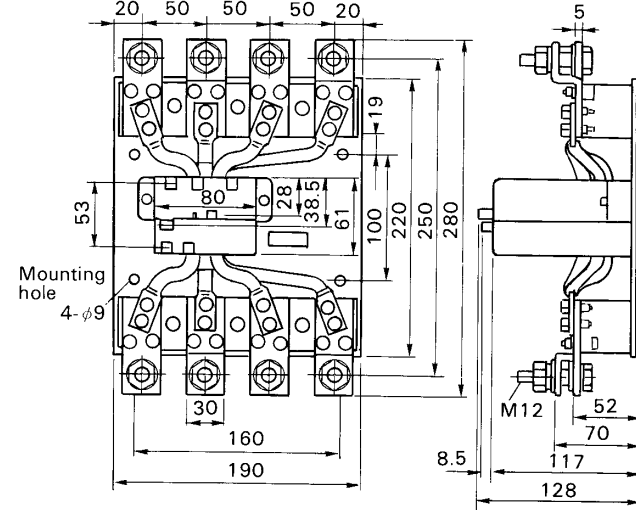
**3-pole**



**BRR21N, 29N, 22N, 23N, 25N**



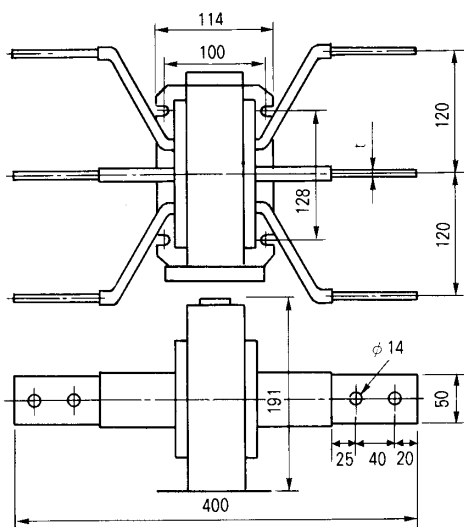
**4-pole**



# Earth Leakage Protective Relays RRD type

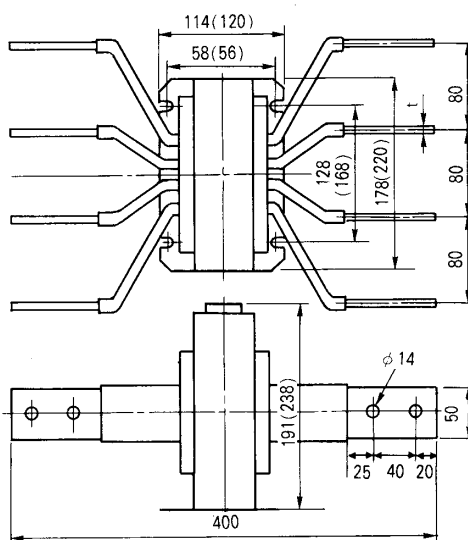
## ■ Dimensions, mm

### RRD6AZ3, 8AZ3, 10AZ3



t RRD6AZ3: 6  
RRD8AZ3: 8  
RRD10AZ3: 12

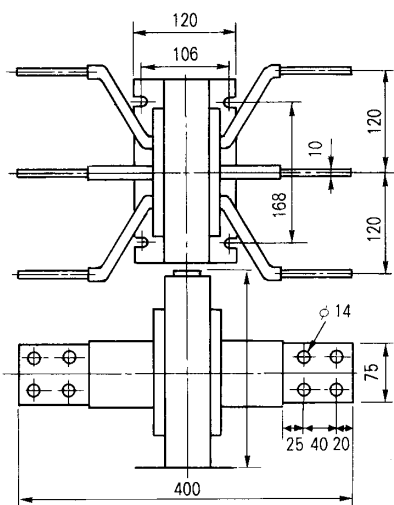
### RRD6AZ4, 8AZ4, 10AZ4



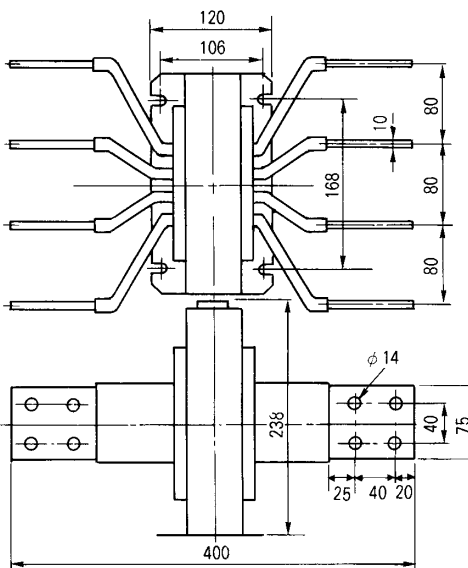
t RRD6AZ4: 6  
RRD8AZ4: 8  
RRD10AZ4: 12

( ) : For RRD10AZ4

### RRD12AZ3

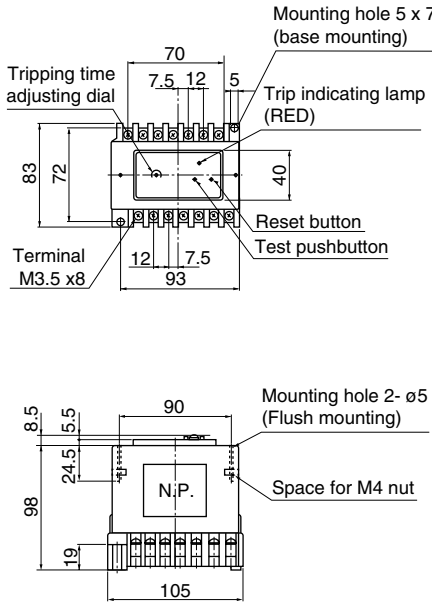


### RRD12AZ4

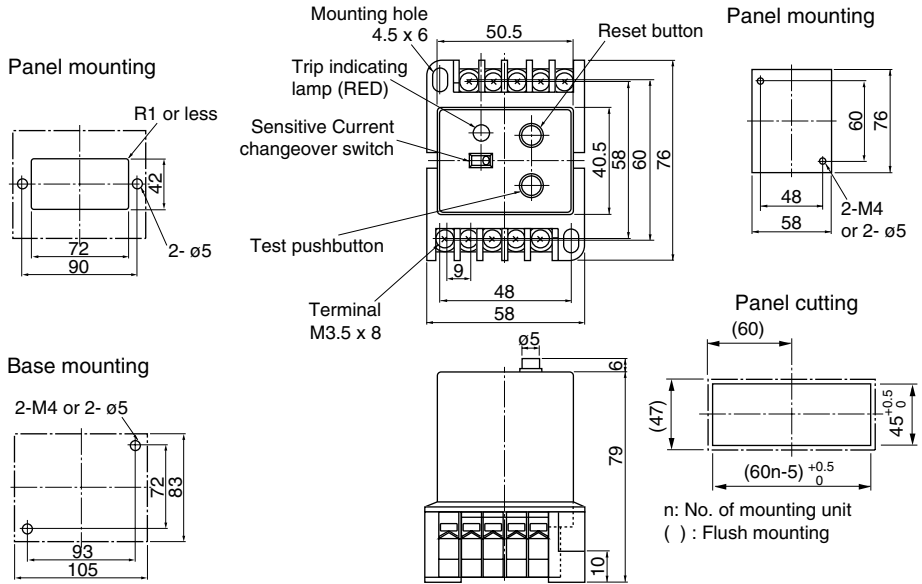


# Earth Leakage Protective Relays RRD and EL types

**■ Dimensions, mm**  
**Relay RRD type**

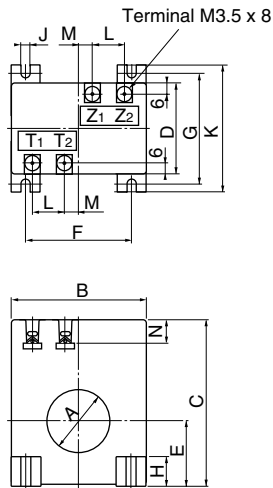


**Relay EL type**

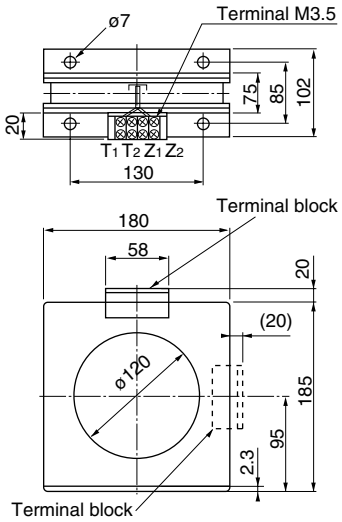


Note: When flush mounting type is required, an adaptor EL-E is needed. (Sold separately)

**Sensors**  
**RRD25, 40, 60, 90P0**  
**EL25, 40, 60, 90P0**



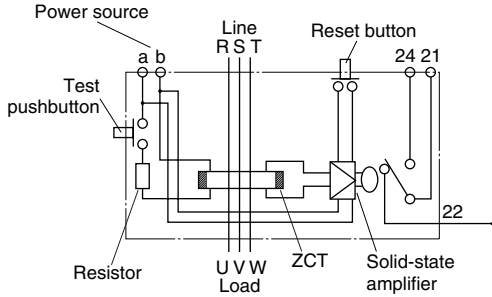
**RRD120, EL120P0**



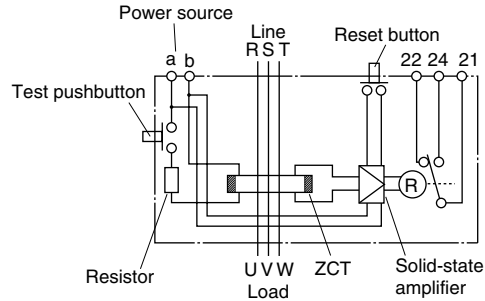
Type	A	B	C	D	E	F	G	H	J	K	L	M	N
<b>RRD25</b>	$\phi 25$	55	72	29	28	40	42	10	5	54	13	7	7
<b>EL25</b>	$\phi 25$	55	72	29	28	40	42	10	5	54	13	7	7
<b>RRD40</b>	$\phi 40$	90	115	62	45	70	75	18	5	90	22	8	18
<b>EL40</b>	$\phi 40$	90	115	62	45	70	75	18	5	90	22	8	18
<b>RRD60</b>	$\phi 60$	120	145	62	60	100	75	18	6	90	22	8	18
<b>EL60</b>	$\phi 60$	120	145	62	60	100	75	18	6	90	22	8	18
<b>RRD90</b>	$\phi 90$	160	185	66	80	125	88	22	7	110	22	8	18
<b>EL90</b>	$\phi 90$	160	185	66	80	125	88	22	7	110	22	8	18

# Earth Leakage Protective Relays BRR, RRD and EL types

## ■ Wiring diagrams BRR01N, 09N

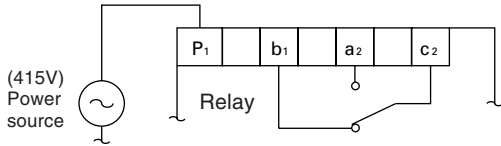


## BRR11N, 19N, 21N, 29N, 22N, 23N, 25N BRR42H, 45H

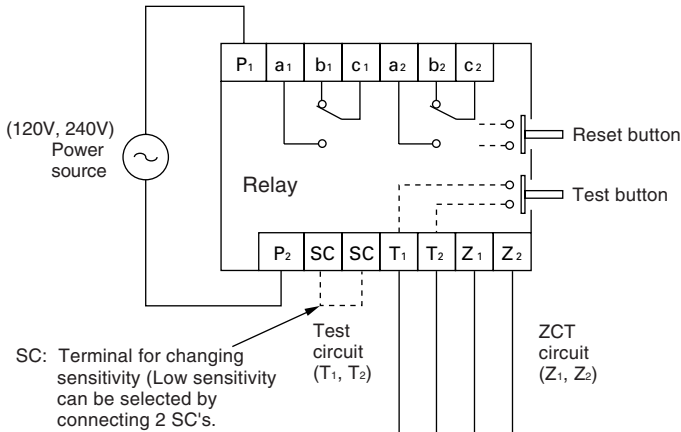


## RRD type

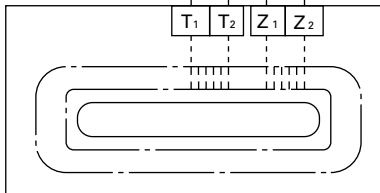
- Where SPDT is selected.



- Where 2PDT is selected.

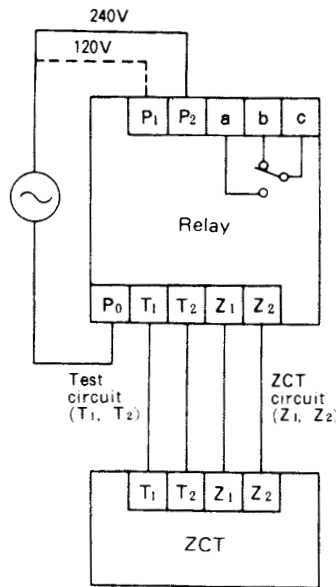


## Sensor



## EL type

- 100/200V, 120/240V



- 415V

