

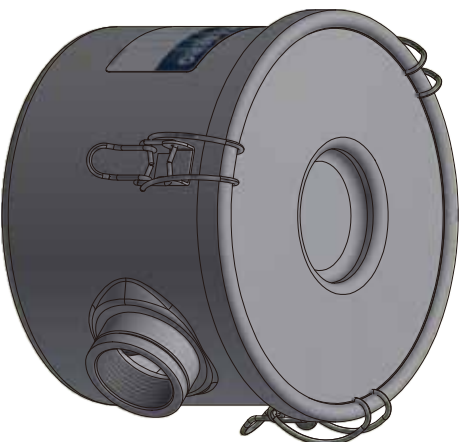
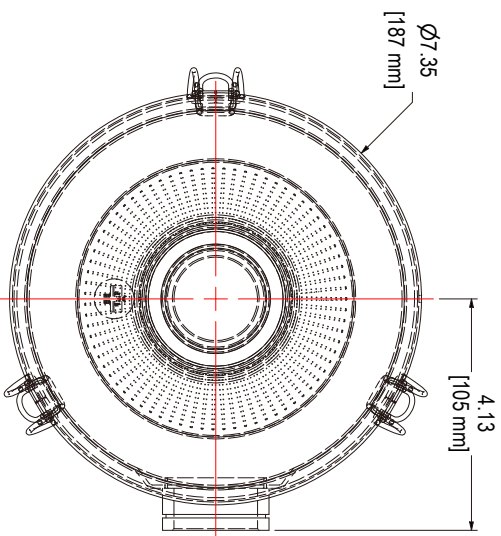
## エアフィルタ(VFYシリーズ)一部形式仕様変更のお知らせ

拝啓 貴社ますますご清栄のこととお慶び申し上げます。  
平素は弊社製品をご愛顧賜りまして、厚く御礼申し上げます。  
掲記の件、以下の通りご案内いたします。  
ご高配の程何卒宜しく願い申し上げます。  
また、お手数をお掛けして誠に恐縮ですが、貴社関連部門へご連絡くださいます様、  
ご協力の程 併せてお願い申し上げます。

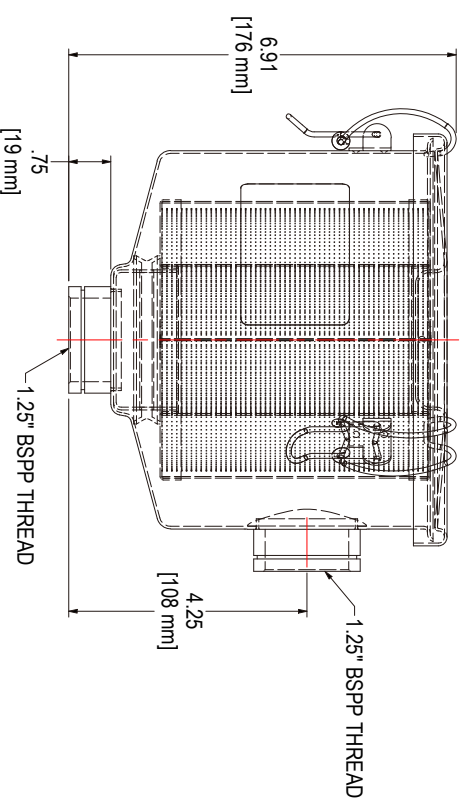
敬具

## 記

製品名	エアフィルタ												
シリーズ、名称	VFYシリーズ												
形式	VFY032A VFY034A												
変更内容	<p>インレットの位置が変更になります。(右図のA部)</p> <table><thead><tr><th>形式</th><th>新寸法 (mm)</th><th></th><th>旧寸法 (mm)</th></tr></thead><tbody><tr><td>VFY032A</td><td>108</td><td>←</td><td>116</td></tr><tr><td>VFY034A</td><td>109</td><td>←</td><td>116</td></tr></tbody></table> 	形式	新寸法 (mm)		旧寸法 (mm)	VFY032A	108	←	116	VFY034A	109	←	116
形式	新寸法 (mm)		旧寸法 (mm)										
VFY032A	108	←	116										
VFY034A	109	←	116										
変更時期	2024年9月出荷分からを予定しています。 (物量の推移によって前後することがあります)												
変更理由	製造過程合理化による、機材変更の為												
添付資料	・外形寸法図_VFY032A (変更後の図面) ・外形寸法図_VFY034A (変更後の図面) ・旧_外形寸法図_VFY032A (変更前の図面) ・旧_外形寸法図_VFY034A (変更前の図面)												



# CONCEPT ONLY



NOTES & SPECIFICATIONS:  
1. UNIT TO BE INDIVIDUALLY BOXED & LABELED.

ELEMENT SPECS	
PART NUMBER	VFY032A-E
MATERIAL	PAPER
FLOW RATE	115 CFM / 195 m <sup>3</sup> /hr
SURFACE AREA	4.4 ft <sup>2</sup> / 0.4 m <sup>2</sup>
I.D.	2.56" / 65mm
O.D.	5.00" / 127mm
HEIGHT	4.82" / 122mm

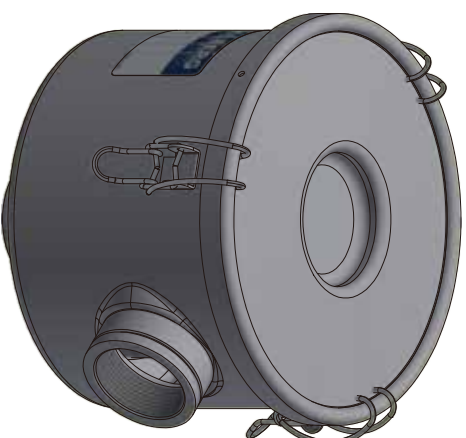
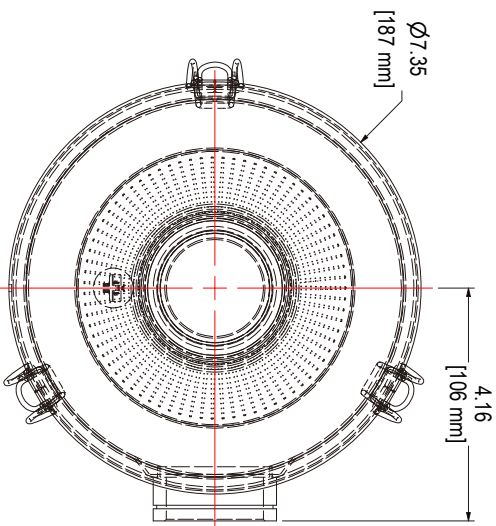


**SOLBERG**  
 Filtration • Separation • Silencing  
 630.773.1363 • www.solbergmtg.com

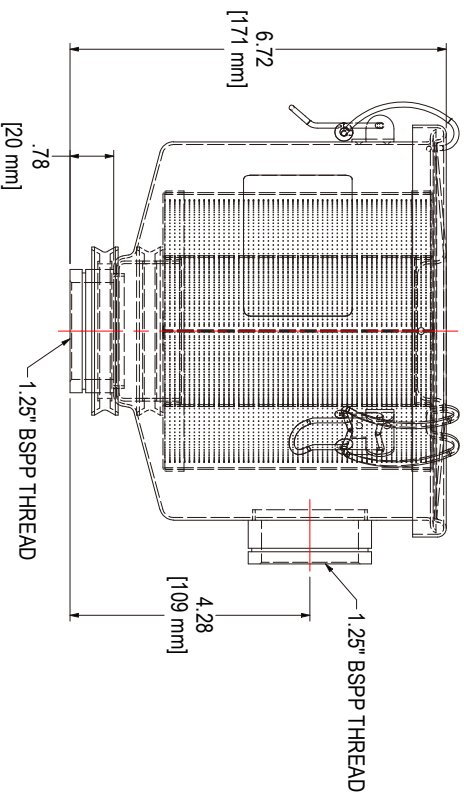
THE INFORMATION CONTAINED HEREIN IS CONFIDENTIAL AND THE PROPERTY OF SOLBERG MOUNTAIN TECHNOLOGIES INC. UNDERSTANDING THAT IT WILL NOT BE REPRODUCED OR COPIED IN ANY MANNER, LOANED OR OTHERWISE, FOR USE BY ANY PERSONS OTHER THAN FOR WHOM IT WAS FURNISHED. IT WILL BE RETURNED UPON REQUEST AND ALL RIGHTS ARE RESERVED. NO WARRANTIES, EXPRESS OR IMPLIED, ARE MADE BY SOLBERG MOUNTAIN TECHNOLOGIES INC. IN CONNECTION WITH THIS INFORMATION.

**TOLERANCES**  
 DIMENSIONS ARE FOR REFERENCE ONLY. ALL DIMENSIONS ARE SUBJECT TO CHANGE UPON PRODUCTION.  
 UNLESS OTHERWISE SPECIFIED:  
 - DIMENSIONS ARE IN INCHES. NO TOLERANCES APPLY.  
 - REF. APPROXIMATE DIMENSIONS. NO TOLERANCES APPLY.  
 - FINISH: BREAK EDGES TO .005-.008 RADIUS/CHAMFER.

MODEL #: VFY032A	MATERIAL: CARBON STEEL	FINISH: GRAY POWDER	SHEET: 1 OF 1
MODEL NUMBER: VFY032A			
DESCRIPTION: CSL-VFY032A-E-128HC, INDIVIDUALLY BOXED & LABELED, GRAY			
PROJECT:	DRAWN BY: AMZ	APPROVED BY: NAD	REV:
	DATE: 2/29/2024	DATE: 3/4/2024	



# CONCEPT ONLY



NOTES & SPECIFICATIONS:  
1. UNIT TO BE INDIVIDUALLY BOXED & LABELED.

ELEMENT SPECS	
PART NUMBER	VFY032A-E
MATERIAL	PAPER
FLOW RATE	115 CFM / 195 m <sup>3</sup> /hr
SURFACE AREA	4.4 ft <sup>2</sup> / 0.4 m <sup>2</sup>
I.D.	2.56" / 65mm
O.D.	5.00" / 127mm
HEIGHT	4.82" / 122mm

**TOLERANCES**

DIMENSIONS ARE FOR REFERENCE ONLY. ALL DIMENSIONS ARE SUBJECT TO CHANGE UPON PRODUCTION.

UNLESS OTHERWISE SPECIFIED:  
- DIMENSIONS ARE IN INCHES, NO TOLERANCES APPLY  
- REF. APPROXIMATE DIMENSIONS TO .005-.020 INCHES UNLESS OTHERWISE SPECIFIED

MODEL #: VFY034A

MATERIAL: CARBON STEEL

FINISH: GRAY POWDER

MODEL NUMBER: VFY034A

SHEET: 1 OF 1

DESCRIPTION: CSL-VFY032A-E-151HC, INDIVIDUALLY BOXED & LABELED, GRAY

PROJECT: DRAWN BY: AMZ DATE: 2/29/2024 APPROVED BY: NAD DATE: 3/4/2024 REV:

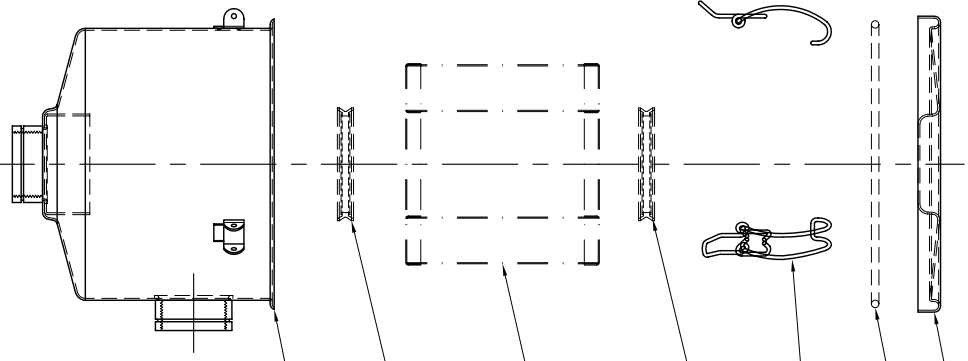
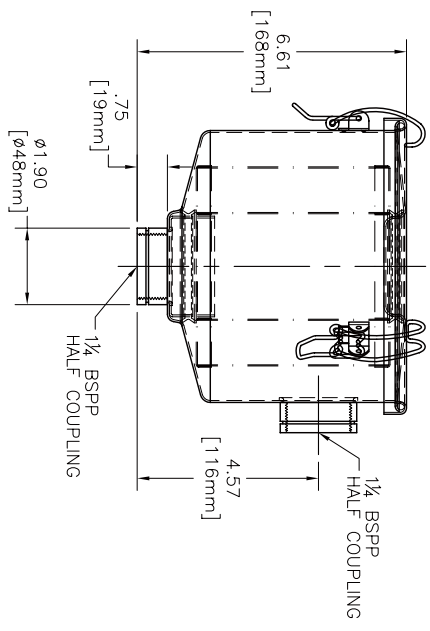
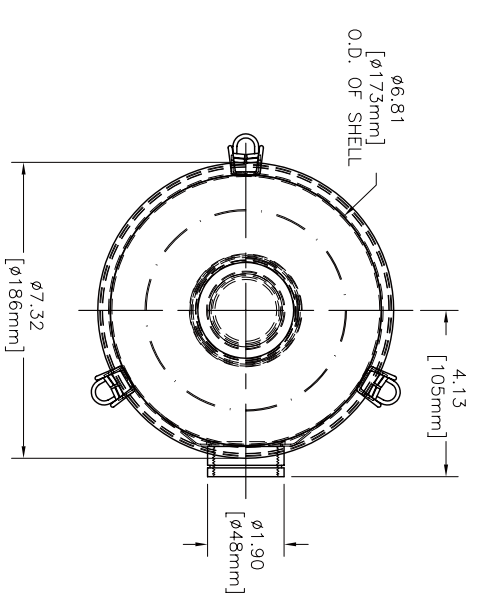


THE INFORMATION CONTAINED HEREIN IS CONFIDENTIAL AND THE PROPERTY OF SOLBERG VALVE ACTING INC. UNDERSTANDING THAT IT WILL NOT BE REPRODUCED, COPIED, IN ANY MANNER, LOANED, OR OTHERWISE USED FOR ANY PURPOSE OTHER THAN THAT FOR WHICH IT WAS FURNISHED. IT WILL BE RETURNED UPON REQUEST AND ALL RIGHTS ARE RESERVED. NO TOLERANCES APPLY UNLESS OTHERWISE SPECIFIED.

630.773.1363 • www.solbergmtg.com

ZONE	REV	DESCRIPTION	ECN #	CHG BY	DATE	APP'D

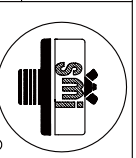
REVISONS	ECN #	CHG BY	DATE	APP'D



\*\*NOTE: DIMENSIONS TO MATCH FUJI 1994 DRAWINGS.

MODEL#	VFY032A	HOUSING MATERIAL	CARBON STEEL	FINISH	BAKED ENAMEL GREY
--------	---------	------------------	--------------	--------	-------------------

The information contained herein is confidential and the information is provided to you with the expressed understanding that it will not be disclosed to others without the express written consent of Solberg Manufacturing Inc. If you are a customer of Solberg Manufacturing Inc. and you have returned upon request to Solberg Manufacturing Inc. the information contained herein, you agree to hold Solberg Manufacturing Inc. harmless from any and all claims, damages, costs, expenses, attorney's fees, and any other restrictions which may apply to this information. Solberg Manufacturing Inc. reserves the right to modify this information without notice and without liability. Solberg Manufacturing Inc. has exclusive jurisdiction over any prosecution that may be necessary to uphold these restrictions.



SOLEBERG MANUFACTURING INC.  
1151 W. ARDMORE AVE.  
ITASCA, IL 60143  
630/773-1363  
FUJI PART #VFY032A

UNLESS OTHERWISE SPECIFIED:  
DIMENSIONS ARE IN INCHES  
-TOLERANCES ARE:  
-REF: APPROXIMATE DIMENSIONS, NO TOLERANCES APPLY

DECMAS	XX ±.25
ANGLES	3Z

SALES REP.: E. NISTROW	DATE	01/06/00
APPROVALS	DATE	01/10/00
DRAWN: P.E.	APPROVED: JMB	

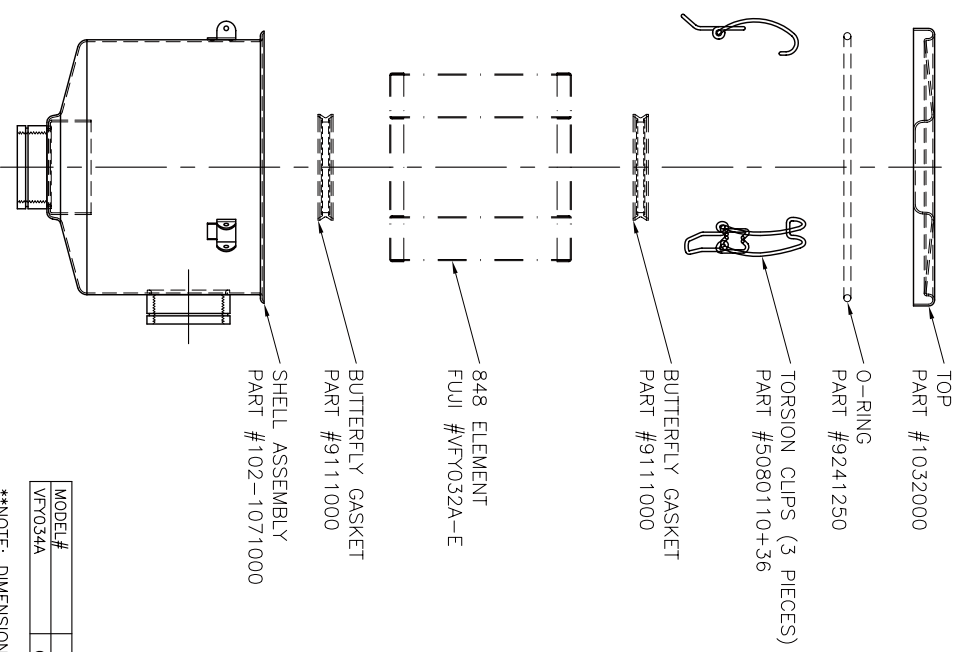
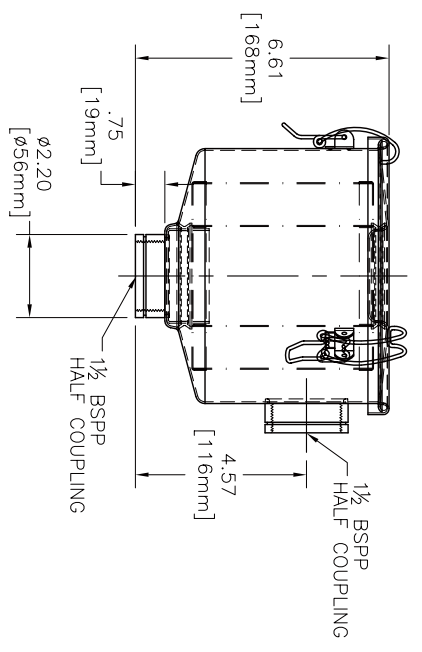
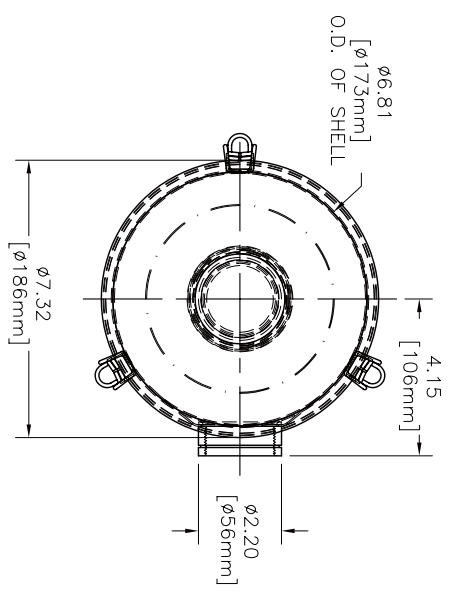
SHEET: 1 OF 1 SHEET SCALE: 1:2  
DRAWING NUMBER: SD11932

A B C D A B C D

4 3 2 1

ZONE	REV	DESCRIPTION	ECN #	CHG BY	DATE	APP'D

REVISONS	ECN #	CHG BY	DATE	APP'D



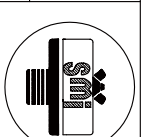
\*\*NOTE: DIMENSIONS TO MATCH FUJI 1994 DRAWINGS.

MODEL #	VFY034A	HOUSING MATERIAL	CARBON STEEL	FINISH	BAKED ENAMEL GREY
---------	---------	------------------	--------------	--------	-------------------

The information contained herein is confidential and the use of it without the expressed understanding that it will not be disclosed to others, either in part or in whole, for any purpose other than that for which it was furnished, is strictly prohibited. Any use of this information without the express written consent of Solberg Manufacturing, Inc. is prohibited. The information contained herein is the property of Solberg Manufacturing, Inc. and is to be used only for the purpose for which it was furnished. Any use of this information for any other purpose, in whole or in part, without the express written consent of Solberg Manufacturing, Inc. is prohibited. Solberg Manufacturing, Inc. reserves the right to change the information contained herein without notice and without obligation.

UNLESS OTHERWISE SPECIFIED:  
DIMENSIONS ARE IN INCHES  
-REF: APPROXIMATE DIMENSIONS, NO TOLERANCES APPLY  
-TOLERANCES ARE:

ANGLES	±2°
DECIMALS	XX ±.25
XXX	±.125



SOLEBERG MANUFACTURING INC.  
1151 W. ARDMORE AVE.  
ITASCA, IL 60143  
630/773-1363

DESCRIPTION:  
FUJI PART #VFY034A

SALES REP: E. NISTROW	DATE	SHEET 1 OF 1	SHEET 1 OF 1	SCALE: 1:2
APPROVALS	04/07/03	DRAWING NUMBER: SD11933	REV: —	
DRAWN: CRW	APPROVED: E.N.			
	04/14/03			

