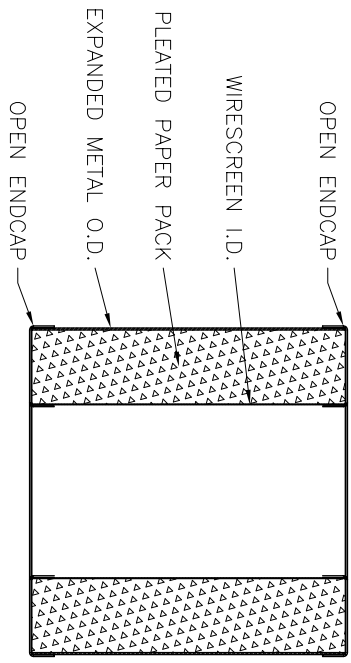
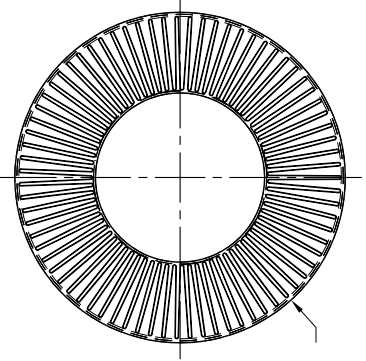
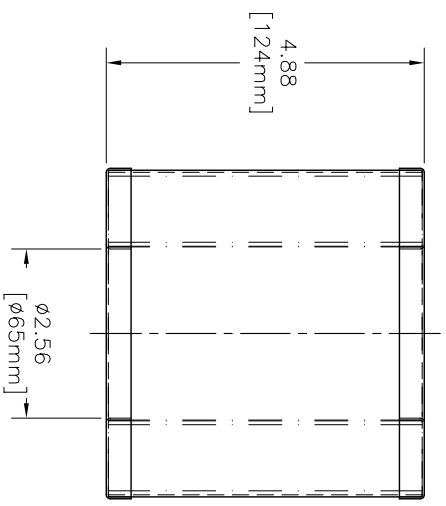


| ZONE | REV | DESCRIPTION | ECN # | CHG BY | DATE | APP'D |
|------|-----|-------------|-------|--------|------|-------|
| | | | | | | |

REVISIONS

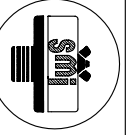


SECTION VIEW



| | |
|-----------------------|-------------|
| REPLACEMENT ELEMENT # | VP1032A-E |
| MATERIAL | PAPER |
| CFM FLOW | 115 |
| SURFACE AREA | 5.0 SQ. FT. |
| I.D. | SEE DRAWING |
| O.D. | SEE DRAWING |
| HEIGHT | SEE DRAWING |

The information contained herein is confidential and the information is not to be disclosed to any other party without the express written consent of Solberg Manufacturing, Inc. If you are not the intended recipient of this information, you should not disseminate, distribute or take any action in reliance on the information. If you have received this information in error, please notify the sender immediately by e-mail at Sales@solberg.com. This notice and its contents apply to all electronic communications sent to you by Solberg Manufacturing, Inc. and its subsidiaries. Solberg Manufacturing, Inc. and its subsidiaries do not warrant the accuracy, reliability, or completeness of the information contained herein. Solberg Manufacturing, Inc. and its subsidiaries shall not be liable for any damages, including consequential damages, arising out of the use of the information contained herein. Solberg Manufacturing, Inc. and its subsidiaries reserve the right to modify or discontinue this information at any time without notice. Solberg Manufacturing, Inc. and its subsidiaries shall not be bound by any terms, conditions, or restrictions which may appear on any printed or electronic document that may be necessary to uphold these restrictions.



SOLEBERG MANUFACTURING, INC.
1151 W. ARDMORE AVE.
ITASCA, IL 60143
630/773-1363

DESCRIPTION:
FUJI PART #VFY032A-E

| | | | | | |
|-----------------------------|-----------|------------------------|--|--------------------|--|
| UNLESS OTHERWISE SPECIFIED: | | SALES REP.: C. SOLBERG | | DATE | |
| -TOLERANCES ARE: | | APPROVALS | | 04/09/05 | |
| DECIMALS | XX ±.25 | DRAWN: CNW | | APPROVED: | |
| ANGLES | XXX ±.125 | APPROVED: | | APPROVED: | |
| CUSTOMER APPROVAL: | | SHEET 1 OF 1 | | SHEET SCALE: 1:1.5 | |
| | | DRAWING NUMBER: | | REV: — | |
| | | SD11833 | | | |

A A

B B

C C

D D

4 3 2 1