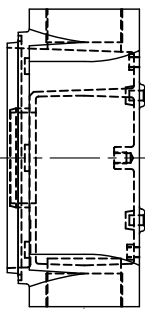
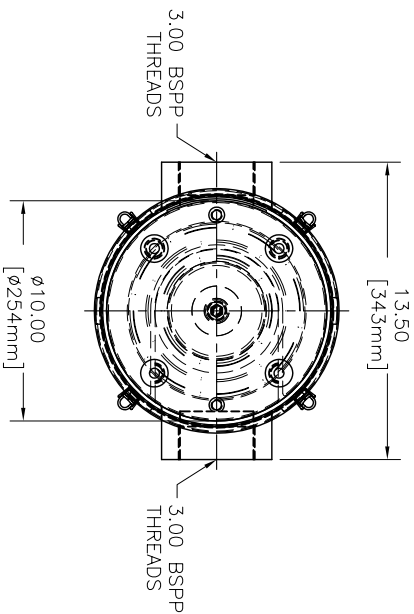


ZONE	REV	DESCRIPTION	ECN #	CHG BY	DATE	APP'D

REVISIONS



CT CASTING
PART #1075600

CT GASKET
PART #9111715

3.00 BSPP THREADS

3.00 BSPP THREADS

ADAPTER ROD
PART #2512301

$\phi 10.00$
[$\phi 254mm$]

REPLACEMENT ELEMENT
PART #VFY038A-E

ELEMENT TOP
PART #1030700+01

WASHER
PART #5010445

BOLT
PART #5010625

TORSION CLIPS (4 PIECES)
PART #5080110+36

CT BUCKET
PART #200-1051800+10

MODEL #	HOUSING MATERIAL	FINISH
VFY038A	CAST ALUMINUM/CARBON STEEL	CAST ALUMINUM/BLACK PAINT

**NOTE: DIMENSIONS TO MATCH FUJI 1994 DRAWINGS.

The information contained herein is confidential and the information is intended for your use only. It will not be disclosed to others without your written consent. Any returned upon request to Solberg Manufacturing Inc. The company name, logo, and other restrictions which apply to the Solberg Division has exclusive jurisdiction over any presentation that may be necessary to uphold these restrictions.

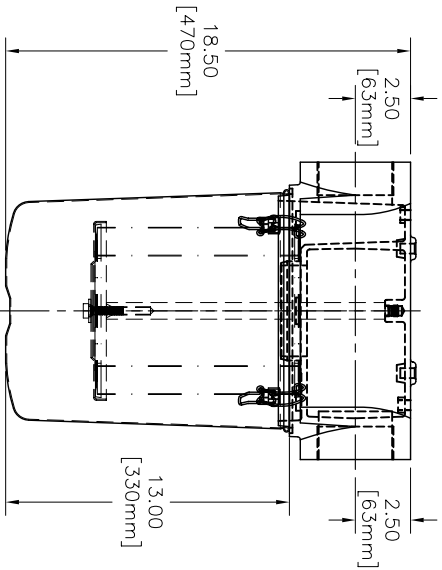
UNLESS OTHERWISE SPECIFIED:

—DIMENSIONS ARE IN INCHES
—TOLERANCES ARE:
DECIMALS: .XX ±.25
FRACTIONS: XXX ±.125
ANGLES: ±2°



SOLEBERG MANUFACTURING INC.
1151 W. ARDMORE AVE.
ITASCA, IL 60143
630/773-1363
FUJI PART #VFY038A

SALES REP.:	DATE	SHEET	SCALE
APPROVALS	07/12/05	1 OF 1	1:4
DRAWN: CNW		DRAWING NUMBER:	REV: —
APPROVED:		SD11935	



A

B

C

D

A

B

C

D

4

3

2

1